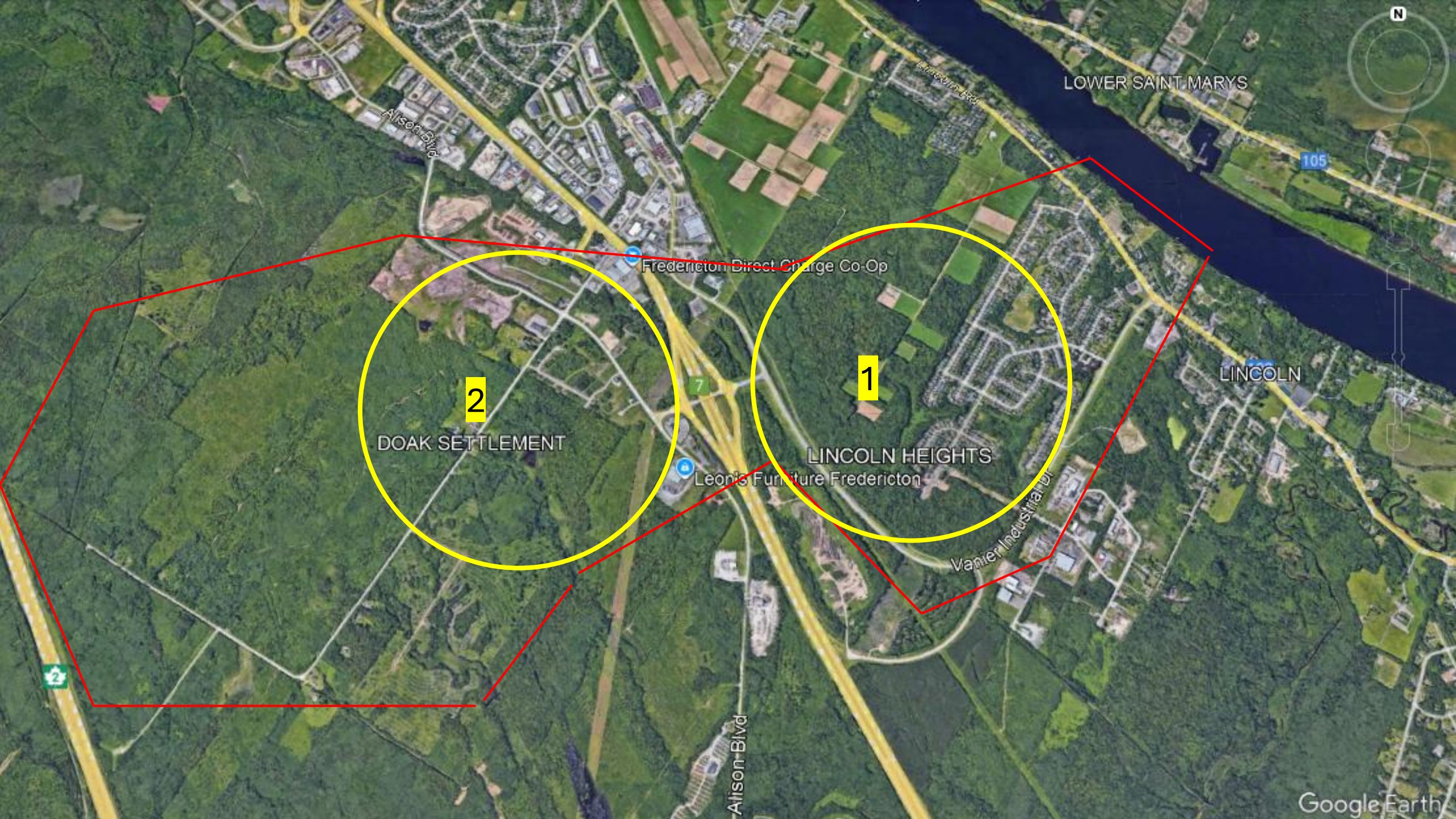


Southeast Fredericton (SEF) K-8 School



LOWER SAINT MARYS

105

Fredericton Direct Charge Co-Op

2

DOAK SETTLEMENT

1

LINCOLN HEIGHTS

Leon's Furniture Fredericton

LINCOLN

Vanier Industrial Dr

Alison Blvd

Google Earth

Vanier Hwy

Alison Blvd

Doak Road

PRELIMINARY



LEGEND

- Site Boundary
- Adjacent Property Boundary
- Existing Internal Boundary
- Proposed ROW
- Wetland
- Wetland / Watercourse Buffer
- Central Node (Mixed-use - 8 Storeys)
- Corridor (Mixed-use - 4 Storeys)
- High Density Residential (Multi's up to 5 Storeys)
- Medium Density Residential (Town / Multi's up to 3 Storeys)
- Low Density Residential (up to 4 Units)
- School
- Greenpace
- Phasing Boundary
- Workforce Housing Area

NOTES

- Subject to survey. Property lines and topographic features are approximate only.
- Site subject to by-law review and regulations.

SOURCES

- Property lines and topographic features are from Provincial Mapping (GeoNB)

SCALE

0 40 80 200 400
1:8,000

SEF K-8 Planning Committee

Shawn Tracey, Director of Finance and Administration, ASD-W

Darla Day, Director of Schools, ASD-W

Nadine Peters, Facilities Manager, ASD-W

Stewart Pope, Assistant Facilities Manager, FEC

Paula Rowsell, Information Technology Supervisor, FEC

Rebecca Piercy, Principal-Montgomery Street Elementary School

Vidhu Jain, Parent- Montgomery Street Elementary School

Chantale Cloutier, Principal – Bliss Carman Middle School

Jamie Yeamans, Parent- Bliss Carman Middle School

Thomas Geburt, Chair-District Education Council

Ken Forrest, Director of Planning, City of Fredericton

Planning Committee Chair

Jansirani Boopalan, Senior Project Manager, EECD

Meetings:

- 26 September 2025
- 17 October - Tour of schools
- 14 November 2025
- 27 November 2025

Sent: Wednesday, October 29, 2025 4:17 PM

Subject: Southeast K-8 Catchment area with enrolment

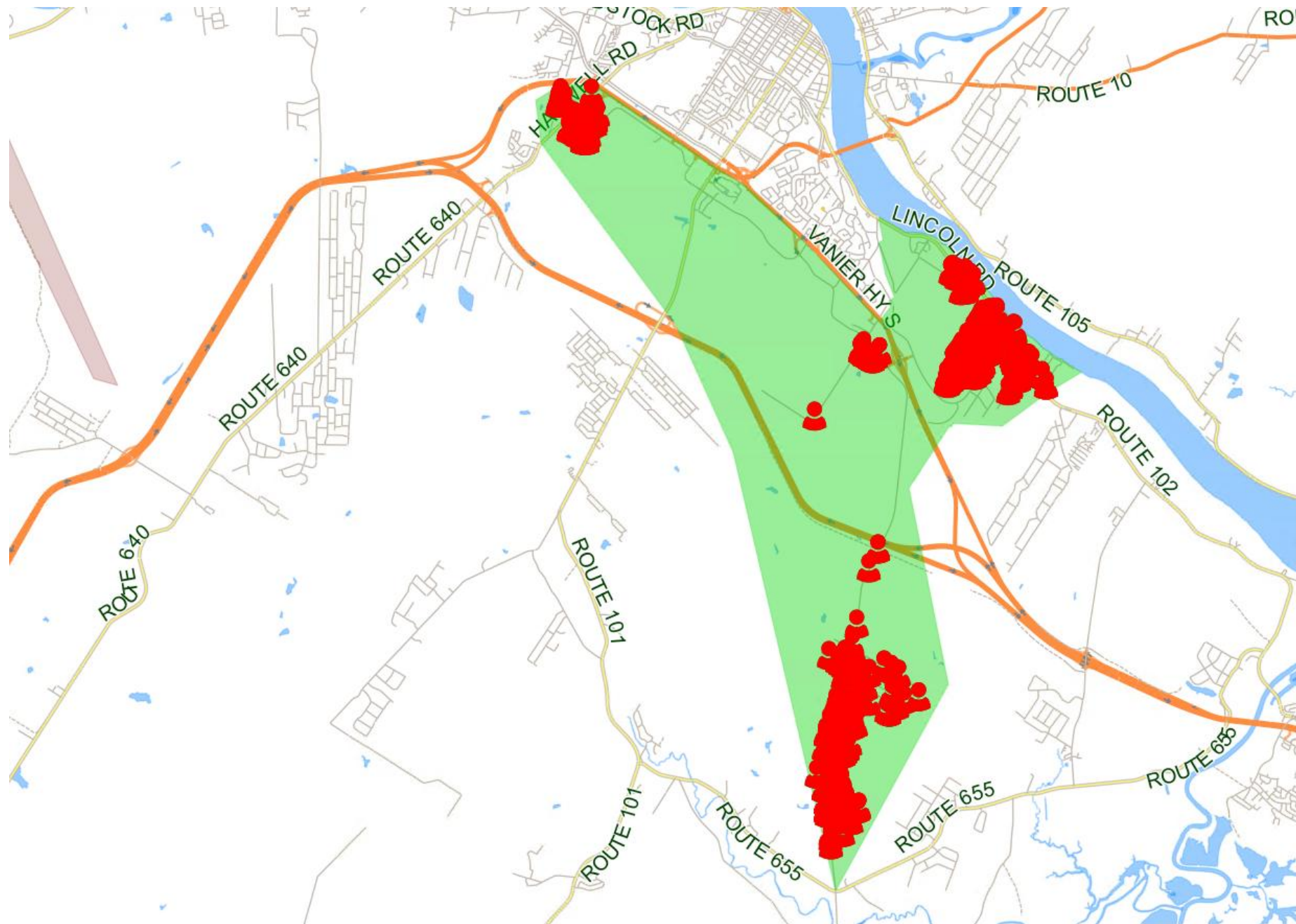
Attached you will see a grid and map of the proposed catchment for the new Southeast K-8 school with forecasted enrolment of 585 students. We have included students from the Wilsey Rd. This area, which currently attends a school in Oromocto, and this model includes students from some of the southside schools, which have pressures due to enrollment.

This allotment of students doesn't interfere with the 3 New K-8 schools in Oromocto, as the numbers will only change moderately, with the Wilsey Rd students being removed from one of these new schools.

We will be balancing the Montgomery St school with students from Connaught St School and Priestman to align catchments better and to allow for the future growth in the downtown core. This supports the new Montgomery St Project on the SDIP.

With the anticipated growth in the Doak Rd area, the city is developing, the new school should be designed for 650 students.

Option	School	Impacts	Current	Adjusted	Current Capacity	Adjusted
					Capacity	Capacity
4	Bliss Carman Middle School	-119	668	549	96.0%	78.9%
	Montgomery Street Elementary School	-183	252	69	116.7%	31.9%
	Gesner Elementary School	-30	235	205	58.9%	51.4%
	Harold Peterson Middle School	-13	358	345	47.5%	45.8%
	Ridgeview Middle School	-40	380	340	48.5%	43.4%
	Summerhill Street Elementary School	-42	256	214	48.1%	40.2%
	Priestman Elementary School	-87	358	271	57.4%	43.4%
	George Street Middle School	-71	744	673	75.5%	68.3%
	Total School Size	585				



District Request:						
School	Impacts on school enrolment	Current Enrolment	Adjusted Enrolment	Current Functional Capacity	Adjusted Functional Capacity	Transportation Travel Time Adjustments (one-way)
Bliss Carman Middle School	-119	668	549	96.00%	78.90%	0-10 minutes shorter
Montgomery Street Elementary School	-183	252	69	116.70%	31.90%	10-20 minutes shorter
Gesner Elementary School	-30	235	205	58.90%	51.40%	5-15 minutes shorter
Harold Peterson Middle School	-13	358	345	47.50%	45.80%	5-15 minutes shorter
Ridgeview Middle School	-40	380	340	48.50%	43.40%	5-15 minutes shorter
Summerhill Street Elementary School	-42	256	214	48.10%	40.20%	5-15 minutes shorter
Priestman Elementary School	-87	358	271	57.40%	43.40%	5-15 minutes longer
George Street Middle School	-71	744	673	75.50%	68.30%	5-15 minutes longer
Total School Size	585					
Enrollment Justification:						
School	Removed	Comments				
Bliss Carman	119	School adjusted enrollment is 549.				
Montgomery Street	183	Can move kids from Connaught.				
Gesner Elementary School	30					
Harold Peterson Middle School	13					
Ridgeview Middle School	40					
Summerhill Street Elementary School	42					
	427					

**DRAFT Planning Functional Program
New Fredericton SouthEast K-8 (ASD-W)**

Target Enrolment: 550 Students / 33 Groups

Space	Quantity	Area	Total Area M²
General			
Kindergarten Classroom	3	90.0	270.0
General Instruction Classroom Gr 1-5	18	70.0	1260.0
General Instruction Classroom Gr 6-8	12	81.0	972.0
General Storage Room			105.0
Project Work Area	5	35.0	175.0
Break out rooms			
Grade 1-5 Classroom		11.0	0.0
Grade 6-8 Classroom		11.0	

Next Steps (as per Policy 409):

Planning Committee to meet in early January to review / approve Education Specifications.

If Planning Committee approves Education Specifications, DFA to present document to DEC for approval on 22 January 2026.

If DEC approves, letter of approval sent to Minister for her consideration and approval.