

Sustainability Study

(EECD Policy 409 – Multi-year School Infrastructure Planning)

Oromocto / Burton Area Schools



Working Discussion Briefing

Sustainability Study:

EECD Policy 409 - Multi-year School Infrastructure Planning

ASD-W and EECD had initiated a review of schools in the Oromocto Education Centre area to examine potential scenarios for long-term infrastructure planning. The review found five potential scenarios for updating school infrastructure in the area, based on population growth and student enrolment numbers. These infrastructure plans have now reached a point where they have been recorded on the Stable Departmental Infrastructure Priorities (SDIP) list, under the name Oromocto K-8 Rationalization. In order to take next steps in the process, ASD-W is required to conduct a sustainability study as outlined in provincial Policy 409- Multiyear School Infrastructure Planning (Sections 6.4 to 6.6 inclusive).

Three public meetings are required as outlined:

- The **first meeting** will inform the school community of the DEC's intention, the criteria and factors to be considered and the steps to be followed.
- The **second meeting** will provide affected persons with the opportunity to make a presentation to the DEC (i.e., let their views be known either in writing or orally).
- The **final meeting** will provide the public with the results of the consultation and the resulting recommendations being submitted to the Minister, as per section 6.7 of the policy.

Quadruple Bottom Line (QBL) / Stable Departmental Infrastructure Priorities (SDIP)

EECD 2024-2025 CAPITAL PROJECT PRIORITIES MEDPE PRIORITÉ DE PROJET D'IMMOBILISATION 2024-25

Rank / Rang	School District / District scolaire	Project Name / Nom du projet
1	ASD-E	New K-12 school - Dieppe
2	ASD-N	Tabusintac Community School
3	ASD-W	Forest Hill / Liverpool St. Schools ← 7 to 3
4	DSF-S	Saint-Henri
5	ASD-W	George Street Middle ← 6 to 5
6	ASD-E	New Salisbury Elementary
7	DSF-NE	W.-Arthur-Losier
8	DSF-S	Abbey Landry
9	DSF-S	Louis J. Robichaud
10	ASD-S	Grand Bay Rationalization
11	ASD-E	Forest Glen / Sunny Brae
12	DSF-S	Mathieu-Martin mi-vie et ajout
13	DSF-S	École Sainte-Anne mi-vie et ajout
14	ASD-N	Bonar Law Mid-life
15	ASD-W	Oromocto K-8 Rationalization ← 17 to 15
16	ASD-E	Riverview High
17	ASD-W	OHS Mid-life ← 19 to 17
18	DSF-S	Amirault mi-vie
19	DSF-S	Samuel-de-Champlain mi-vie
19	ASD-W	Devon Middle Replacement ← From QBL
21	ASD-E	Mountain View

Oromocto K-8 Rationalization QBL / SDIP History:

- #19 on QBL for 2021-22
- ?? on QBL for 2022-23
- #3 on QBL for 2023-24
- SDIP created in 2022
- 16 projects moved from QBL 2022-23 to SDIP
- #17 on SDIP for 2023-24
- #15 on SDIP for 2024-25

Sustainability Study Timeline ...

- 23 May 2017 - Facilities study requested on Town of Oromocto K-8 schools – Capital Projects Submission
- 12 April 2018 - Ernst & Young Report on Oromocto Schools (K-8) submitted
- 23 May 2019 - DEC approves conducting Policy 409 Study on Oromocto Schools
- 24 May 2019 - Major Capital Priorities and Study List submission for 2019-20 ... *#8 on list is 3 new K-8 schools to replace 7 existing schools in the Oromocto area (Burton, Assiniboine, Harold Peterson, Hubbard, Gesner, Summerhill and Ridgeview)*
- 28 May 2019 - Minister informed on the intended sustainability study for fall 2019 and spring 2020
- 31 May 2019 - Acting Superintendent advised school communities of intended study
- 19 September 2019 - DEC decides to cancel Oromocto study in favour of Carleton North feeder schools
- 20 September 2019 - Minister advised of change in focus of DEC studies; communities informed
- 19 October 2023 - DEC votes in favour of conducting sustainability study of 7 schools Oromocto / Burton area
- 20 October 2023 - Minister informed of intended study and schedule for meetings
- 8 November 2023 - Superintendent advises school communities plus other interested parties of study and schedule for meetings
- 5 January 2024 - Superintendent reminds communities of upcoming first meeting (13 January) & schedule
- 11 January 2024 – DEC receives updated E&Y presentation; first meeting re-scheduled to 27 January 2024
- 9 February 2024 – Superintendent reminds communities of upcoming second meetings (16 & 23 March), registration process, date for third meeting and location of all information on district web site

Sustainability Study: Oromocto / Burton Area Schools

(EECD Policy 409 – Multi-year School Infrastructure Planning)

Meeting #1 – 27 January 2024

This was an “expo” style drop-in session through the day conducted at Oromocto High School in the cafeteria lobby. Each school had a station where you could learn many details about the school and ask questions. Throughout the day, there were seven 30-minute scheduled presentations in the OHS theatre, one for each school being studied. This first meeting was designed to share relevant information about the schools, as per Section 6.6.2 of Policy 409. The schedule for the day and presentations were as follows:

- 9:00 – Doors to OHS Open and Stations Open for Visits
- 9:30 – Harold Peterson Middle School Presentation
- 10:15 – Summerhill Street Elementary School Presentation
- 11:00 – Gesner Street Elementary School Presentation
- 1:00 – Ridgeview Middle School Presentation
- 1:45 – Hubbard Elementary School Presentation
- 2:30 – Burton Elementary School Presentation
- 3:15 – Assiniboine Avenue Elementary School Presentation
- 4:00 – Stations Close

Sustainability Study: Oromocto / Burton Area Schools

(EECD Policy 409 – Multi-year School Infrastructure Planning)

Meeting #2 - 16 March 2024

Time	Location	Topic	Presenter
0900-0930	Hubbard Elementary School - Gym	Burton Elementary School	Ms. E Peddle
0930-1000	Hubbard Elementary School - Gym	Burton Elementary School	Mr. T. Dinner; Ms. L. Cudia; Mr. M Rannelli
1000-1010	Hubbard Elementary School - Gym	Burton Elementary School	Mr. M Forsythe
1015-1100	Hubbard Elementary School - Gym	Assiniboine Street Elementary School / Hubbard Elementary School	Ms. L Dormer; Ms. V Baker
1100-1200	Hubbard Elementary School	Tour of Hubbard Elementary School	DEC Councillors

Sustainability Study: Oromocto / Burton Area Schools

(EECD Policy 409 – Multi-year School Infrastructure Planning)

Meeting #2 – 23 March 2024

Time	Location	Topic	Presenter
0900-0930	Ridgeview Middle School - Gym	Harold Peterson & Ridgeview Middle School	Open
0930-1000	Ridgeview Middle School	Tour School	DEC <u>Councillors</u>
1000	Ridgeview Middle School - Gym	Conclude Meeting #2	DEC <u>Councillors</u>
1015-1115	Burton Elementary School	Tour School (includes travel time)	DEC <u>Councillors</u>
1115-1215	Harold Peterson Middle School	Tour School (includes travel time)	DEC <u>Councillors</u>
1215-1300	Gesner Street Elementary School	Tour School (includes travel time)	DEC <u>Councillors</u>
1300-1345	Assiniboine Street Elementary School	Tour School (includes travel time)	DEC <u>Councillors</u>

Schools History ...

- All schools originally built by Department of National Defence when Camp Gagetown was created.
- Schools are all located in amongst the Permanent Married Quarters (PMQ) area of the Town of Oromocto.
- Schools turned over to the Province in 1967

- **Burton** - built 1961; currently K-2; 3 classrooms (41 students)
- **Assiniboine** - built in 1957 as K-5 school; currently K-2; 18 classrooms (242 students)
- **Gesner** -built in 1959 as K-5; currently K-2; 19 classrooms (238 students)
- **Hubbard Avenue - building heating system failed in February / March 2021**
- **Hubbard Elementary** (Drummond Drive / Arc-En-Ciel) - built as K-5; currently 3-5; 18 classrooms (314 students)
- **Summerhill** - built in 1959 as K-5; currently 3-5; 19 classrooms (261 students)
- **Harold Peterson** - built in 1958; addition added in 1966; currently 6-8; 26 classrooms (377 students)
- **Ridgeview** (Waasis) - built in 1958; addition added in 1966; currently 6-8; 27 classrooms (384 students)

School Community Presentations / Consultations

Burton:

- Locate new K-8 in Burton
- Potential for growth with a newer, or even larger school.
- Revision of the catchment area allows for student growth for the school, more grades, students to remain in the community longer, enhances community ties, more stability for the children.
- A new school would provide opportunity for an Early Learner's Program and daycare.

Assiniboine/ Hubbard:

- PSSC Chairs on 7 schools met and decided one presentation. Assiniboine & Hubbard support 3 new K-8 model
- Longer term stability / continuity with one school throughout elementary / middle years
- More welcoming for military families; no switching over 2-3 year posting
- Benefits to children who struggle with change; better for families with multiple children/ages
- Better social development – buddies, interactions, mentors
- School design can overcome fears of age groupings

Harold Peterson

- I wanted to pass along the Harold Peterson Middle School PSSC has decided not to present independently and have chosen to put our support behind scenario 3 (3 new K-8 schools with rezoning) and a single presentation.

PSSCs of Seven Schools Presentation:

- Assumption of stable population but new construction occurring in Oromocto (apartments, sub-division)
- Military families starting to avoid Oromocto due to school structure

Two Communities favour 2 x K-5 & 1 x 6-8 Model (Gesner & Ridgeview)

- Elementary school and middle school have different administrative needs
- A fresh start at a new school benefits some students who have struggled through elementary school
- Families like the idea of keeping smaller kids separate from bigger kids (safety, bad influence)
- One middle school makes it easier to ensure all students have equal access to both early and late French immersion

Five Communities favour 3 x K-8 Model

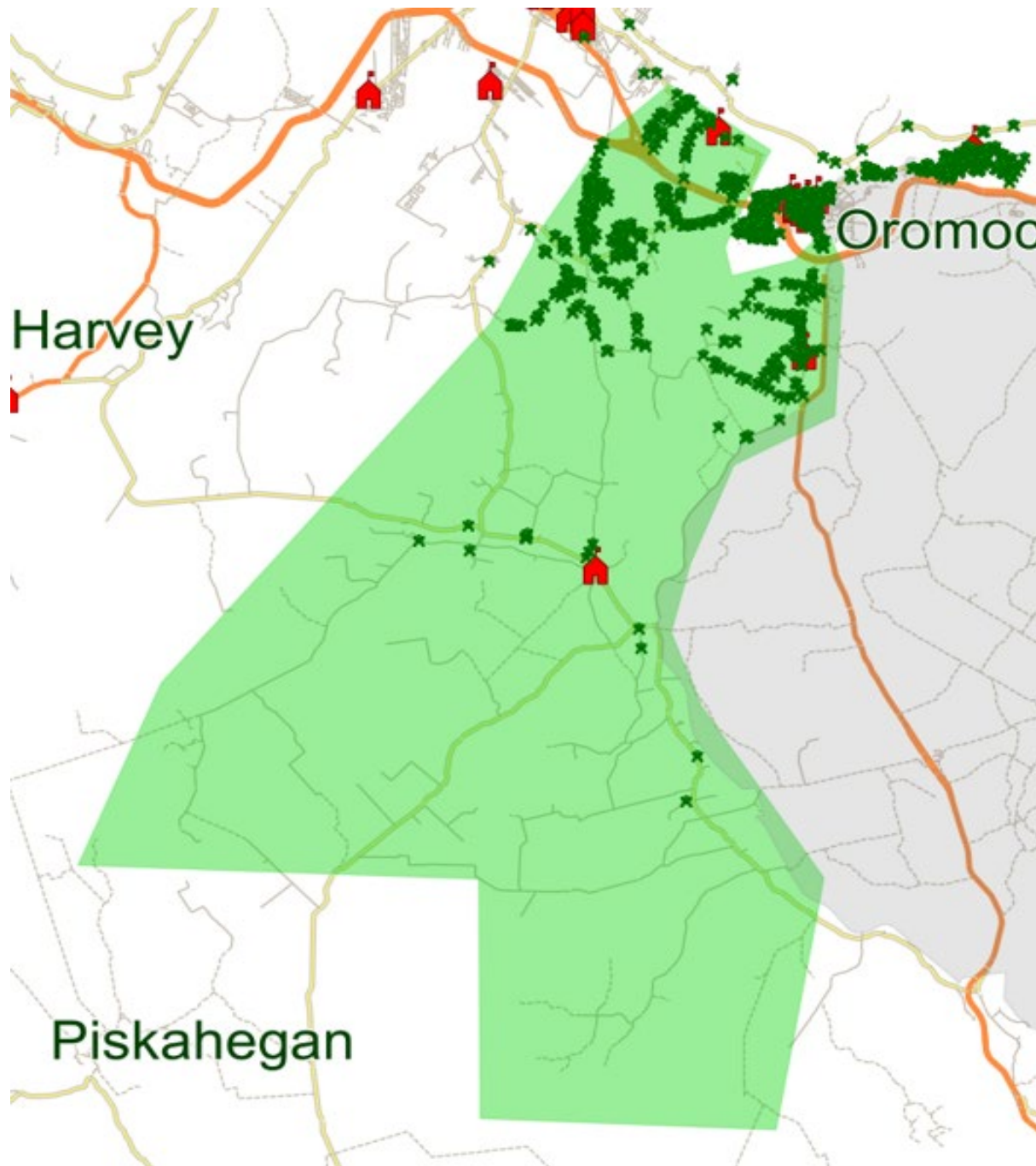
- Children experience continuity with their education and can build stronger relationship with staff
- The atmosphere of the school may be tamed if the 6-8 population is spread between 3 schools
- Easiest model on families, especially CAF families and those with children who struggle with transitions
- Administrative needs of elementary & middle school students may be addressed by the principal & VPs
- Families like the idea of keeping smaller kids separate from bigger kids (safety, bad influence), like at Sunbury West and Hanwell Park, but also appreciate the opportunity for positive interaction, influence and relationships by purposeful programs possible in a k-8
- One concern is that late French immersion will be cancelled if enrolment does not meet minimum standards at any one school (like at Sunbury West)
- Recommend revision of catchment areas to balance school population

Lincoln Elementary School PSSC (received via email on 3 April)

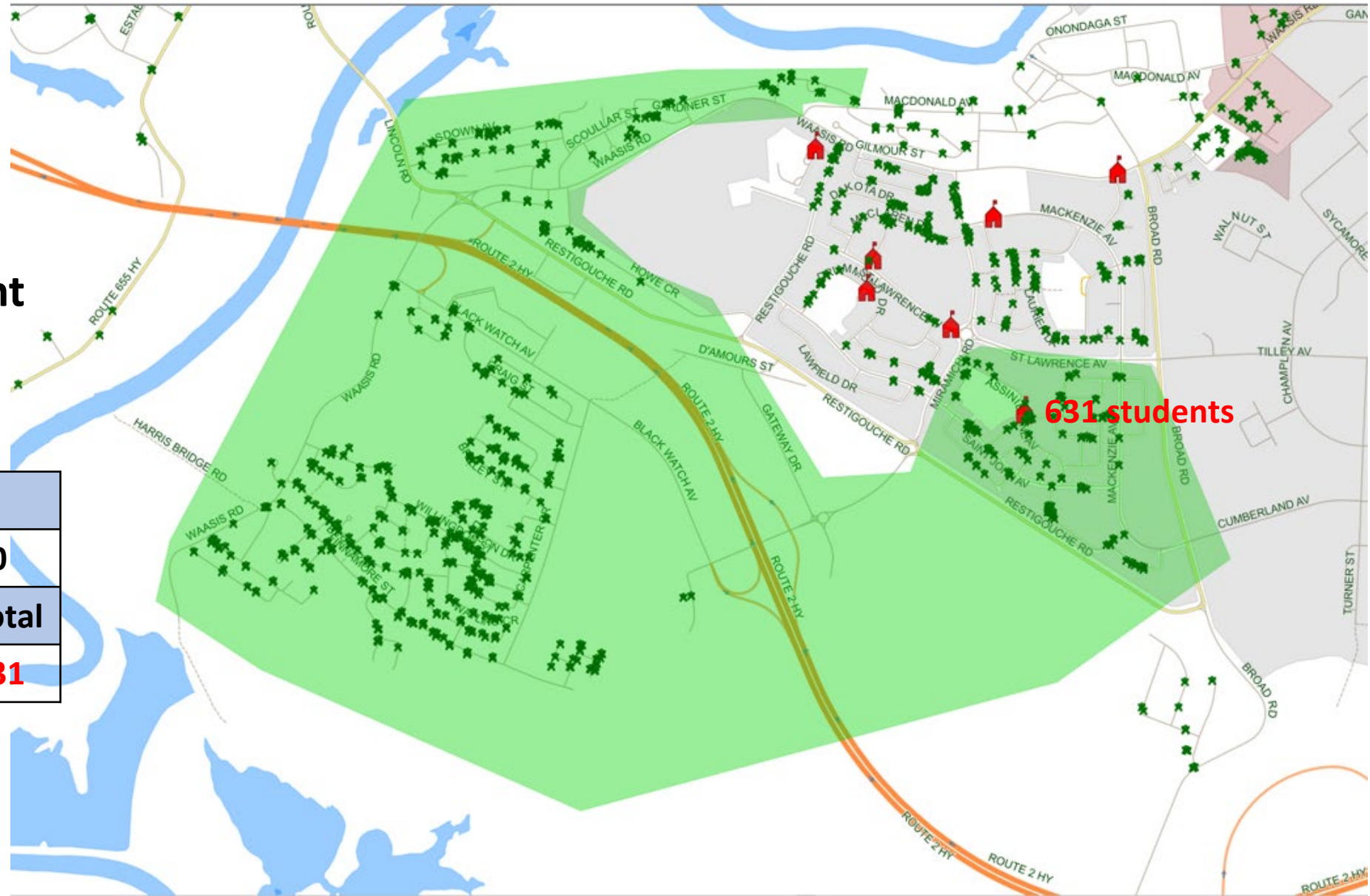
- The PSSC of Lincoln Elementary Community School is again requesting that Anglophone School District West revisit the catchment area for LECS. Requests in July 2018 and November 2019 that were not granted.
- Previously students from Sunpoke Road, Post Road, the entire Rusagonis Road and Route 655 from the flashing lights on the 655 to Lincoln Road Highway 102 (Camp Road), as well as Richmond Estates attended Lincoln Elementary Community School.
- Students were re-zoned to Oromocto schools when district found that LECS was not suitable.
- LECS has been rebuilt. Bigger and better school equipped to take on more than the **154 current student population**.
- **We are only at around 56% capacity and could have as many as 288 students.**
- LECS is the only school in this area between Oromocto and Fredericton. A logical option for students living in Lincoln, Waasis and Rusagonis (including Wilsey Road) to attend.
- We are a community school ready to welcome new students as we have lots of room to grow.

Oromocto K-8 School #1 Proposed Catchment

K	1	2	3	4
35	39	49	50	45
5	6	7	8	Total
53	106	105	122	604



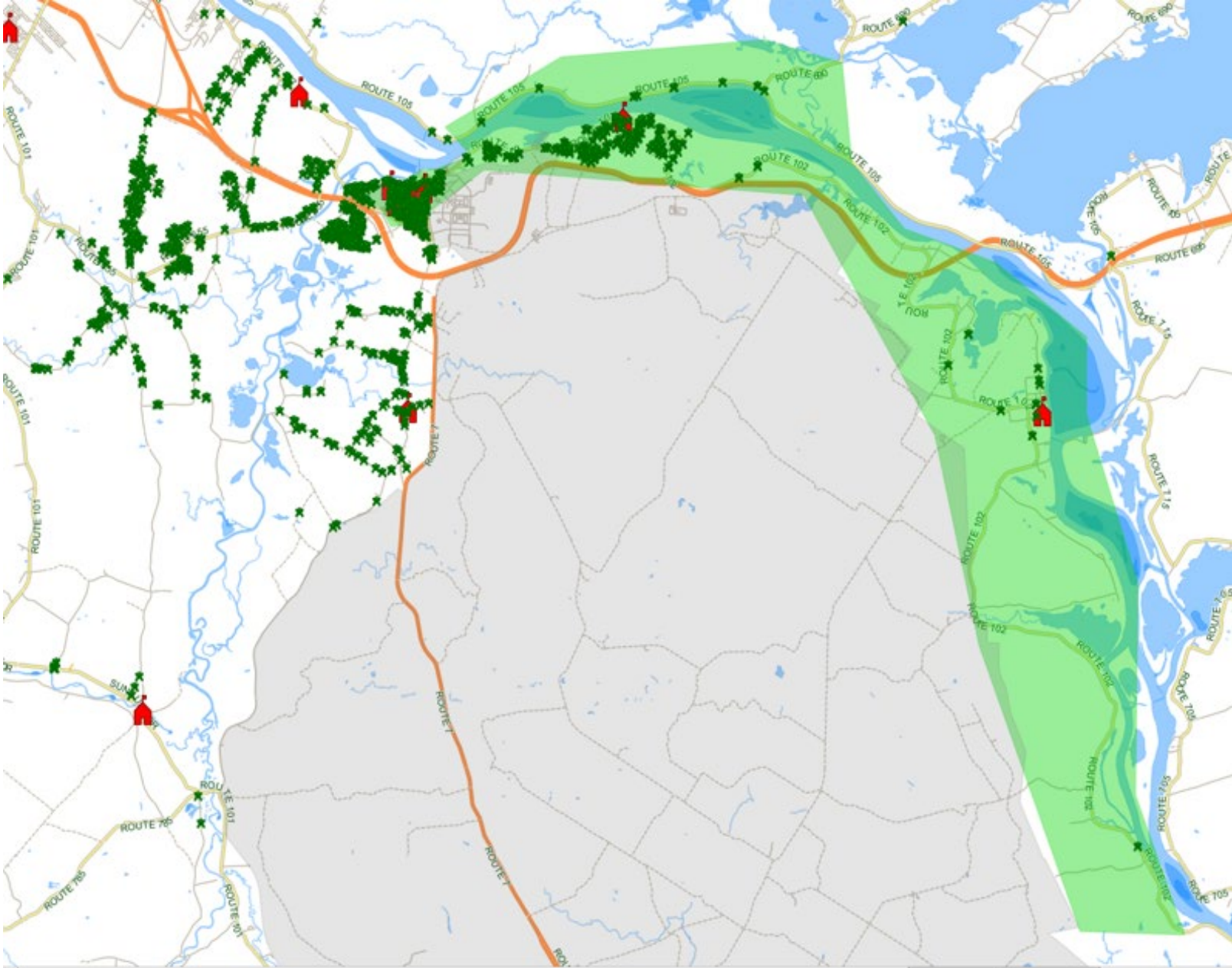
Oromocto K-8 School #2 Proposed Catchment



K	1	2	3	4
59	63	67	68	70
5	6	7	8	Total
66	86	74	78	631

Oromocto K-8 School #3 Proposed Catchment

K	1	2	3	4
62	45	72	69	74
5	6	7	8	Total
69	56	76	60	605



DECISION ON THREE NEW SCHOOL TYPES

- ❖ Two new K-5 grade level elementary schools and one new 6-8 grade level middle school.**
- ❖ Three K-8 grade level elementary schools.**

PSSCs of Seven School Communities – Location Recommendation

- One school in Oromocto
 - One school either Oromocto West or Rusagonis/Waasis/Lincoln
 - One school in Burton
-
- A school in Burton is very important to their community, but availability of childcare is a current issue. We recommend adding a daycare into a new Burton school.
 - Although transportation is beyond the scope of Ernst & Young's report, families saw this conversation as an opportunity to address bussing issues, particularly Rusignonsis students who are picked up at 7am, then sit at the school for one hour waiting for school to start.
 - Students from Sunbury West School do not have equal access to French Immersion due to multiple transfers between buses and waiting at different schools. One report had a K student from Hoyt on the bus for 2.5 hours. Ernst & Young did not include those students in their scope of work. This may be solved by looking to solutions used in the Francophone School District.
 - Families who chose to live in the Town of Oromocto are resistant to students attending a rural school

Site Selection

The following is a list of some considerations when selecting a site:

- Community Amenities: possible mutually beneficial relationships with community.
- Community School Use: proposed or possible utilization of the school site/facility for community programs.
- The Catchment Area: located as close as possible to area where the majority of the student population lives.
- Accessibility of Site: flat land; soil conditions; natural or man-made barriers.
- Planning Bylaws: local planning regulations should be reviewed and found compatible.
- Available Utilities: site should be selected with utilities that can be provided at a reasonable cost; in rural areas, installation of water supply and sewage disposal systems require investigation; availability/assurance of services such as electricity, gas, oil, roads, telephone, etc., without excessive construction costs of mains and distribution lines.
- Transportation: accessibility to public transportation; ease and safety of pedestrian and vehicular travel; safe bicycle routes; walking areas - schools should be located near the centre of population areas; busing strategy – routes available, distance and time factors.
- Land Availability: ownership; size (18 acres + 1 acre/100 students)

Student Populations

School	Grade	Age	Ventil	22-23 enrol	1-Oct-23 enrol	Class Rooms	Capacity	Capacity 5 yrs out	Lang
Burton	K-2	1961	Yes	38	41	3	60%	70%	prime
Assiniboine	K-2	1957	32 Hepa	255	242	18	66%	67%	FI
Gesner	K-2	1959	36 Hepa	252	238	19	64%	51%	FI
Hubbard	3-5	1957	52 Hepa	321	314	18	64%	56%	FI
Summerhill	3-5	1959	Yes	254	261	19	48%	43%	FI
Ridgeview	6-8	1958	44 Hepa	349	384	27	45%	48%	LFI
Harold Petersen	6-8	1958	44 Hepa	378	377	26	50%	50%	EFI
				1847	1857				
Option 1	2 x K-5	$38 + 255 + 321 = 614$			$41 + 242 + 314 = 597$			$242 + 314 = 556$	
		$252 + 254 = 506$			$238 + 261 = 499$			$41 + 238 + 261 = 540$	
	1 x 6-8	$349 + 378 = 727$			$384 + 377 = 761$			$384 + 377 = 761$	
Option 3	3 x K-8	$1847 / 3 = 615$ each			$1857 / 3 = 619$ each			Adjusted areas	
projected 26-27	West = 726							604	#1
projected 25-26	Centre = 761							631	#2
projected 26-27	Outside = 504							605	#3

Population by Grade 2023-24 - Data as of 1 October 2023										
School	K	GR1	GR2	GR3	GR4	GR5	GR6	GR7	GR8	Totals
Burton	12	15	14							41
Assiniboine	70	81	91							242
Gesner	75	77	86							238
Hubbard				100	113	101				314
Summerhill				89	82	90				261
Lincoln	27	26	25	28	25	28				159
Geary	21	27	26	31	28	22				155
HP							124	124	129	377
Ridgeview							123	130	131	384
Totals	205	226	242	248	248	241	247	254	260	2171
							Less Geary / Lincoln			1857

Note: Lincoln & Geary added to chart as they impact Middle School going forward.

Population by Grade 2024-25- Forecast										
School	K	GR1	GR2	GR3	GR4	GR5	GR6	GR7	GR8	Totals
Burton	15	12	15							42
Assiniboine	66	70	81							217
Gesner	77	75	77							229
Hubbard				105	100	113				318
Summerhill				86	89	82				257
Lincoln	20	27	26	25	28	25				150
Geary	38	21	27	26	31	28				164
HP							121	124	124	369
Ridgeview							120	123	130	373
Totals	216	205	226	242	248	248	241	247	254	2104
							Less Geary / Lincoln			1790

Note: Kindergarten numbers as of March 2024 registration;
GR 6 numbers are total previous Gr 5, divided by 2.

Current Population In-flow to Oromocto Schools

Burton = 213

Rusagonis = 270

Gagetown = 10

Lincoln = 90

Waasis = 112

Geary = 116

Sunbury West = 10

Note: Only addition to normal in-flow is 41 x K-2 students attending BES

BURTON: (Data Source 21 March 2024)			
Grade	Students in Burton Catchment Area	Students with a Burton Address	School zoned for & attended
K	14	19	BES
1	24	30	BES, AAES
2	22	30	BES, AAES
3	19	29	HAES
4	27	31	HAES
5	23	27	HAES
6	19	25	RVMS, HPMS
7	28	35	RVMS, HPMS
8	22	28	RVMS, HPMS
TOTAL	198	254	

RUSAGONIS: (Data Source 21 March 2024)

Grade	Students with a Rusagonis Address	School zoned for / attended
K	20	GSES-19/NMES-1
1	32	GSES-27/NMES-4/OUT OF CATCHMENT-1
2	35	GSES-30/NMES-2/OUT OF CATCHMENT-3
3	40	SSES-34/NMES-5/OUT OF CATCHMENT-1
4	31	SSES-28/NMES-1/OUT OF CATCHMENT-2
5	35	SSES-28/NMES-5/OUT OF CATCHMENT-2
6	44	BCMS-4/HPMS-14/RVMS-26
7	37	BCMS-2/HPMS-12/RVMS-23
8	31	BCMS-2/HPMS-9/RVMS-20
	305	GSES-SSES-166/NMES-18/Outside-9/ BCMS-8/HP&RVMS-104

WAASIS: (Data Source 21 March 2024)			
Grade	Students Waasis Address	School zoned for	Schools attended
K	15	LECS, GSES	LECS-5/GSES-9/OUT OF CATCHMENT-1
1	22	LECS, GSES	LECS-16/GSES-5/OUT OF CATCHMENT-1
2	13	LECS, GSES	LECS-6/GSES-7
3	17	LECS, SSES	LECS-9/SSES-8
4	15	LECS, SSES	LECS-6/SSES-8/ OUT OF CATCHMENT-1
5	25	LECS, SSES	LECS-8/SSES-15/OUT OF CATCHMENT-2
6	20	RVMS. HPMS	
7	17	RVMS. HPMS	
8	23	RVMS. HPMS	
TOTAL	167	MS-60	LECS-50/GSES-SSES-52/Outside-5

Geary: (Data Source: 5 April 2024)			
Grade	Students in Geary Elementary Community School	School zoned for	School Attended
K	21	GECS	GECS-19/OUT OF CATCHMENT-2
1	29	GECS, AAES	AAES-2/GECS-25/OUT OF CATCHMENT-2
2	29	GECS, AAES	AAES-4/GECS-22/OUT OF CATCHMENT-3
3	33	GECS, HAES	GECS-28/HAES-2/OUT OF CACTHMENT-3
4	30	GECS, HAES	GECS-25/HAES-3/OUT OF CATCHMENT-2
5	26	GECS, HAES	GECS-20/HAES-4/OUT OF CATCHMENT-2
6	27	RVMS, HPMS	HPMS-24/RVMS-3
7	34	RVMS, HPMS	HPMS-29/RVMS-5
8	40	RVMS, HPMS	HPMS-37/RVMS-3
TOTAL	269		GECS-139/AA-HE-HP-RV-116/Out-14

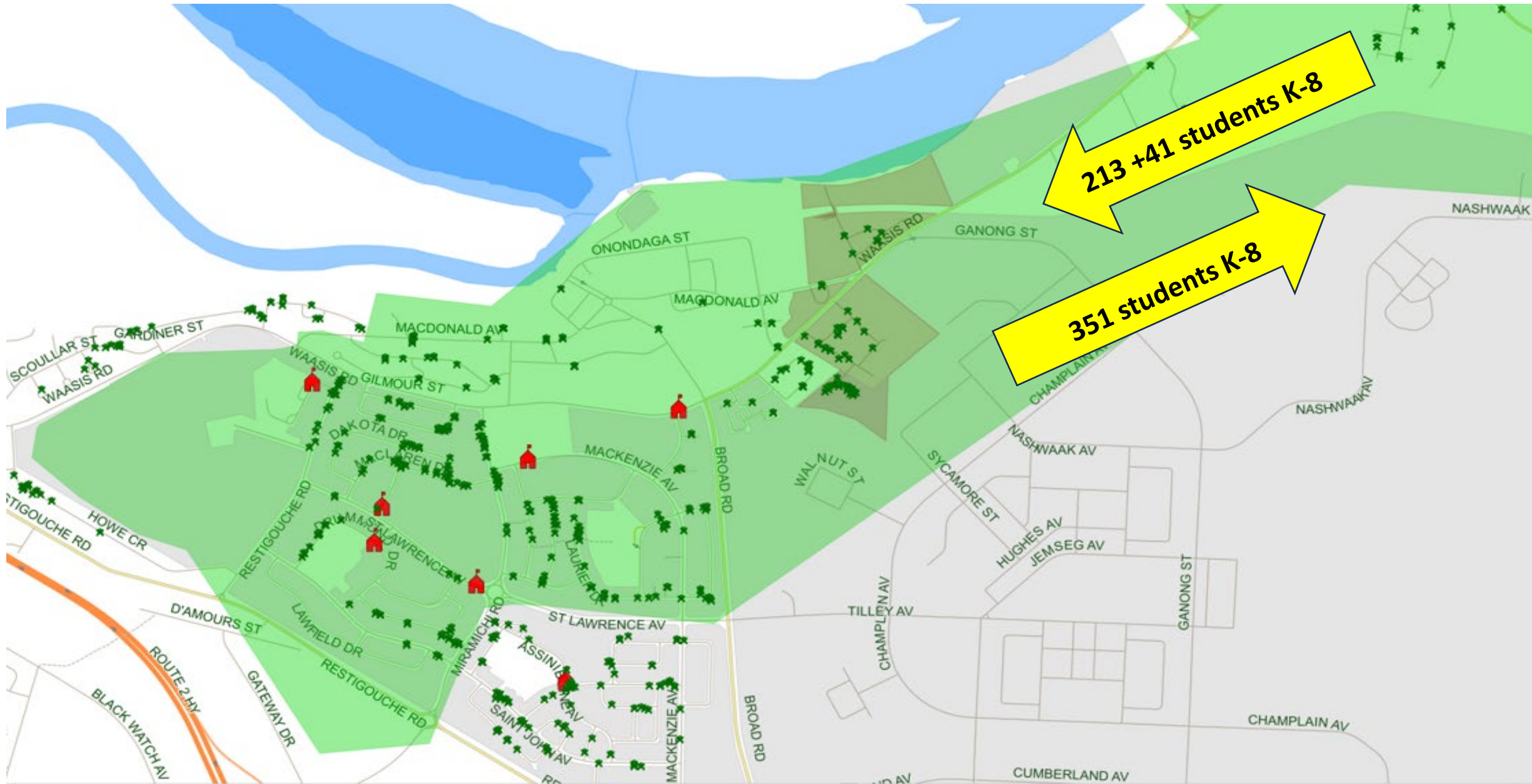
LINCOLN (Data Source: 11 April 2024)

Grade	Students with a Lincoln Address	School zoned for	School Attended
K	21	LECS	LECS-19/OUT OF CATCHMENT-2
1	15	LECS,GSES	LECS-10/GSES-4/OUT OF CATCHMENT-1
2	26	LECS,GSES	LECS-20/GSES-3/OUT OF CATCHMENT-3
3	27	LECS,GSES	LECS-20/SSES-5/OUT OF CACTHMENT-2
4	25	LECS,GSES	LECS-20/SSES-5/OUT OF CACTHMENT-2
5	32	LECS,GSES	LECS-22/SSES-7/OUT OF CATCHMENT-3
6	14	RVMS,HPMS	HPMS-3/RVMS-11
7	22	RVMS,HPMS	HPMS-4/RVMS-17/OUT OF CATCHMENT-1
8	33	RVMS,HPMS	HPMS-9/RVMS-22/OUT OF CATCHMENT-2
TOTAL	215		LECS-111/ GSES&SSES-24/HPMS&RVMS-66 /OUT-13

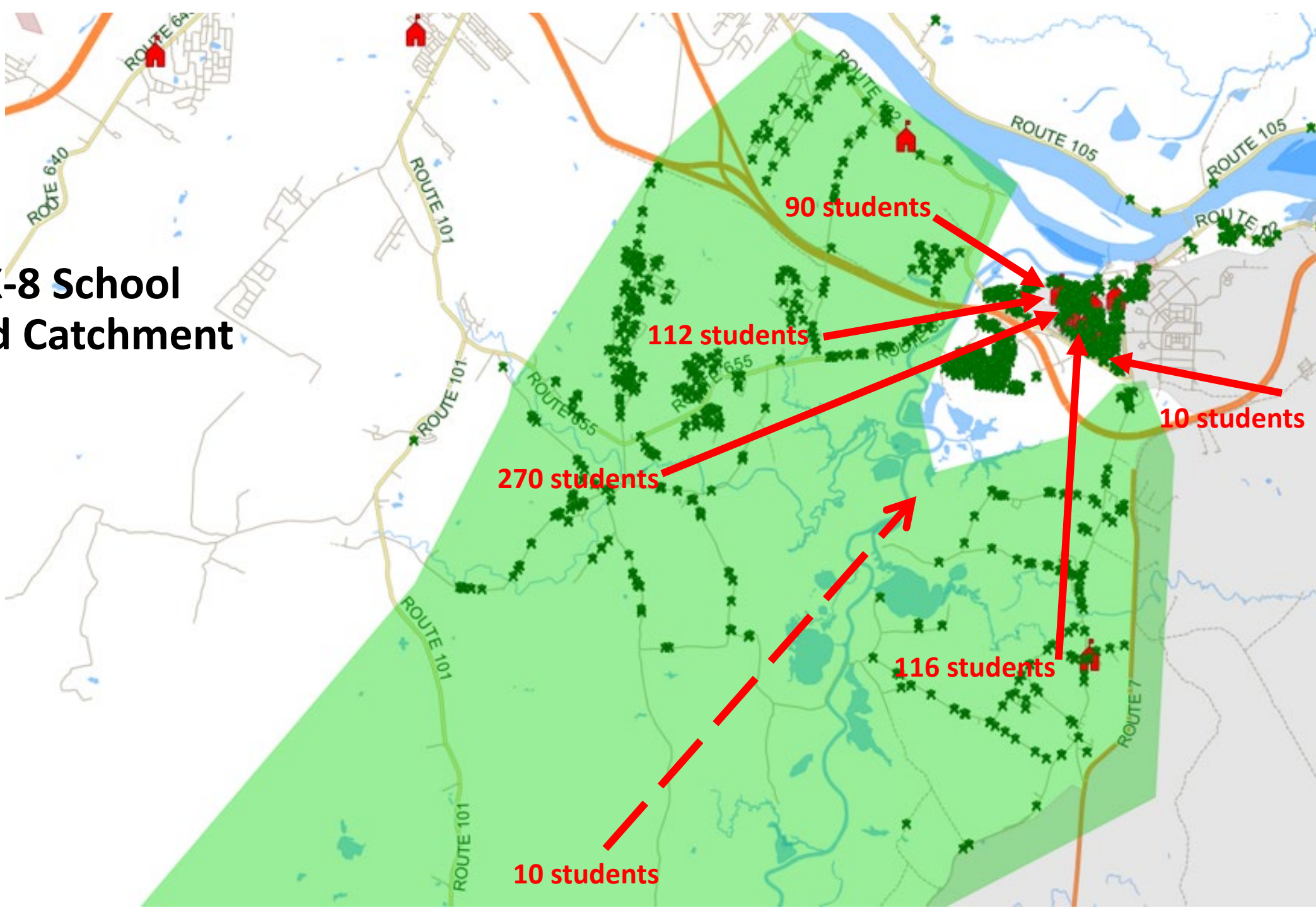
Gagetown (Data Source: 5 April 2024)			
Grade	Students in Gagetown School boundary	School zoned for	School Attended
K	13	GS	GS-10/OUT OF CATCHMENT-3
1	12	GS,AAES	GS-12
2	13	GS, AAES	GS-12/AAES-1
3	15	GS, HAES	GS-14/HAES-1
4	18	GS, HAES	GS-16/HAES-1/OUT OF CATCHMENT-1
5	13	GS, HAES	GS-12/OUT OF CATCHMENT-1
6	18	GS, RVMS	GS-14/RVMS-2/OUT OF CATCHMENT-2
7	12	GS, RVMS	GS-10/RVMS-2
8	14	GS, RVMS	GS-11/RVMS-3
TOTAL	128		GS-111/AA-HE-RV-10/Out-7

Sunbury West: (Data Source: 5 April 2024)			
Grade	Students in Sunbury West School Bdry	School zoned for	School Attended
K	27	SWS	SWS-26/OUT OF CATCHMENT-1
1	24	AAES/SWS	SWS-22/OUT OF CATCHMENT-2
2	39	AAES/SWS	SWS-34/AAES-3/OUT OF CATCHMENT-2
3	24	HAES/SWS	SWS-21/HAES-2/OUT OF CATCHMENT-1
4	24	HAES/SWS	SWS-24
5	25	HAES/SWS	SWS-25
6	44	HPMS/SWS	SWS-40/HPMS-3/OUT OF CATCHMENT-1
7	32	HPMS/SWS	SWS-30/OUT OF CATCHMENT-2
8	27	HPMS/SWS	SWS-25/HPMS-2
TOTAL	266		SWS-247/AAE-HE-HPMS-10/Out-9

Oromocto K-8 School #3 Proposed Catchment



Oromocto K-8 School #1 Proposed Catchment





4 km

18.2 km

11 km

er Maugerville

Portobello Creek National Wildlife Area

Randall Corner

Lakeville Corner

Sheffield

Grand Lake Meadow

Lower Lincoln

Maugerville

Burton

Swan Creek

Oromocto

Camp Gagetown

Babbitt

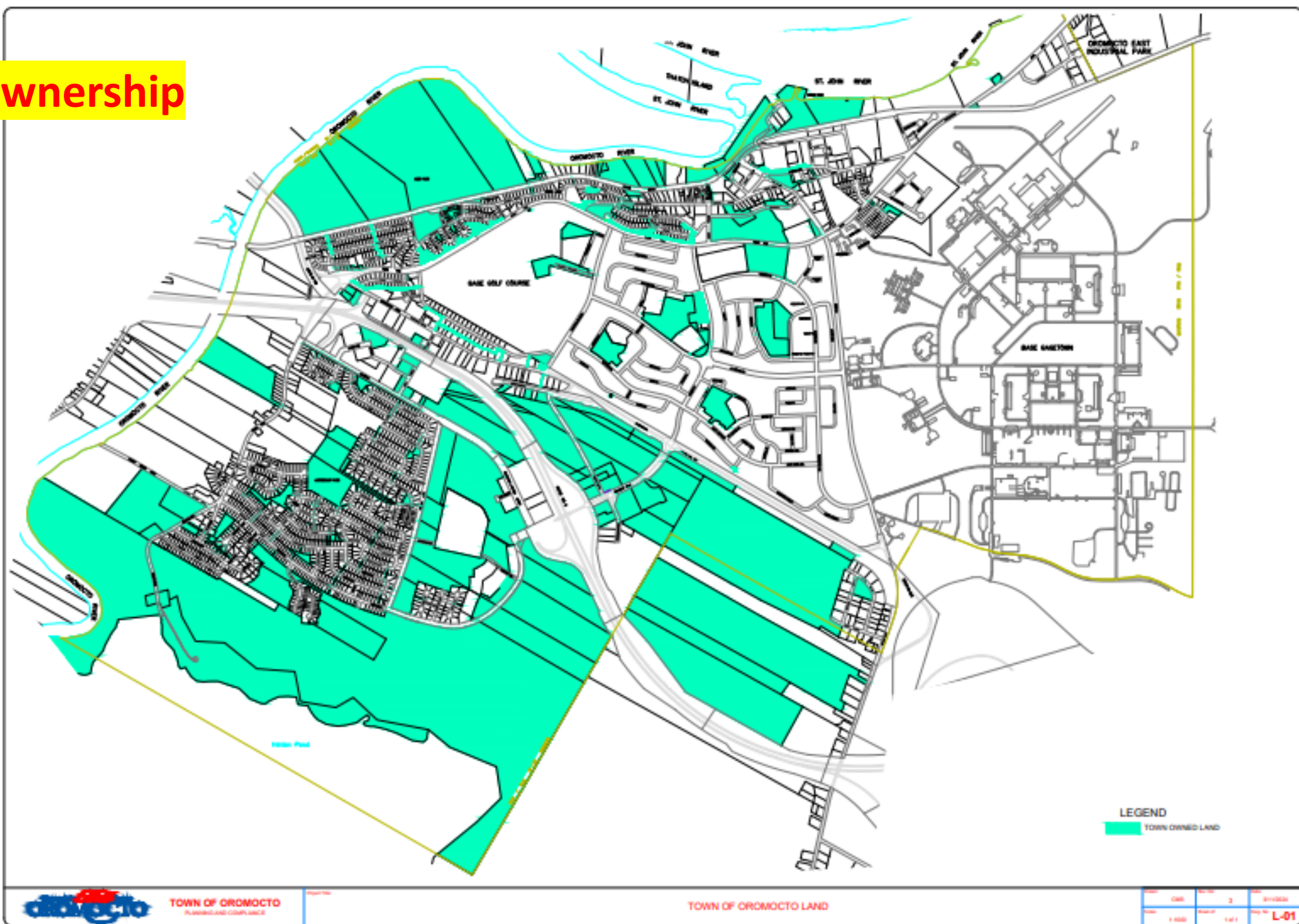
Upper Gagetown

omocto West

Image © 2024 Airbus

Google Earth

Land Ownership



OPTIONS ON SCHOOL LOCATIONS

(Policy 409, Annex B)

- ❖ DEC - Make recommendation for general location of schools.**
- ❖ Minister - Decision on specific sites for new schools.**

Conclusion to Sustainability Study

A letter will be sent to the Minister of Education and Early Childhood Development advising him of the decisions made by the District Education Council regarding:

- Types of new schools for the Oromocto area.
- Closure of current schools only once new schools have been built.
- Recommendation on the general location of the new schools.

The letter will be accompanied by an Executive Summary of the study process.

Thank you to everyone who participated in this sustainability study!