

SUSTAINABILITY STUDY - RIDGEVIEW MIDDLE SCHOOL



→ SATURDAY, JANUARY 27, 2024



PUBLIC MEETING #1 AGENDA

- Introductions
- Review of Provincial Policy 409 Multi-Year School Infrastructure Planning
- Presentation of Information – Ridgeview Middle School
- Question and Answer Period
- What's Next?
 - Online Resources
 - Next Meetings





INTRODUCTION

- ASD-W and EECD had initiated a review of schools in the Oromocto Education Centre area to examine potential scenarios for long-term infrastructure planning. The review found five potential scenarios for updating school infrastructure in the area, based on population growth and student enrolment numbers. These infrastructure plans have now reached a point where they have been recorded on the Stable Departmental Infrastructure Priorities (SDIP) list, under the name Oromocto K-8 Rationalization. In order to take next steps in the process, ASD-W is required to conduct a sustainability study as outlined in provincial Policy 409-Multiyear School Infrastructure Planning.



PROVINCIAL POLICY 409

MULTI-YEAR SCHOOL INFRASTRUCTURE PLANNING

- Outlines a number of responsibilities to do with facilities in our system
- Sections 6.4, 6.5, 6.6, and 6.7 are relevant for sustainability studies
- Three public meetings are required as outlined:
 - Meeting 1 – Presentation of information from District regarding school
 - Meeting 2 – Presentation from stakeholders regarding their thoughts on the sustainability of the school and relevant factors
 - Meeting 3 – Final review of information by District Education Council (DEC) and subsequent motion on next steps.



PROVINCIAL POLICY 409

MULTI-YEAR SCHOOL INFRASTRUCTURE PLANNING

- There are several potential outcomes as described in section 6.4.3 of the policy, including:
 - Maintaining the status quo
 - Repairing the school
 - Grouping schools together
 - Closing the school
 - Placing some students elsewhere



INFORMATION TO BE PRESENTED

- Enrolment
- Quality of Education Programs & Services
- Transportation
- Finances
- Impact on Other Schools
- Building Challenges/Health & Safety
- Impact on Local Community
- Economic Development
- Ernst & Young Report

ENROLMENT

Total Enrolment
2022-23



350

Number of pupils attending the school. The graph represents up to 6 years of total enrolment history at the school.

Projected Utilization
in 5 years
(Projected Enrolment)



48% (375)

Proportion of the school's capacity projected to be in use 5 years from now.

ENROLMENT BY GRADE LEVEL

October 1, 2023

	English Prime	Late French Immersion (Gr. 6 Entry)	Total
6	107	18	125
7	110	18	128
8	116	15	131
			384

MAXIMUM CLASS SIZES

Grade Level	Maximum Student Count
Kindergarten – Grade 2	21
Grade 3	26
K – 3 Combined Classes	16
Grade 4 – 6	28
Grades 3 – 5 Combined Classes	23
Grades 7 – 12	29
Grades 5 – 12 Combined Classes	24

QUALITY OF EDUCATION PROGRAMS & SERVICES

Student to Teacher Ratios

Year	Provincial Staffing Formula		Actual	
	Total Students : Total Teachers	Students : Teachers	Total Students : Total Teachers	Students : Teachers
2023-2024	384 : 23.61	16.26 : 1	384 : 25.70	14.94 : 1



CORE CURRICULUM AND SUPPORTS

Ridgeview Middle School	
Early French Immersion	No
Late French Immersion	Yes
Music and or Fine Arts Specialists	Yes
EST - Resource	Yes
EST - Guidance	Yes
Academic Support Teacher	Yes
District Curriculum Lead Coach Team	Provides Support to Schools through Subject Coordinators
Behaviour Intervention Mentor	Yes
Science Lab	No
Computer Lab	Yes
Gymnasium	Yes

QUALITY OF EDUCATION PROGRAMS & SERVICES

- ❖ Grades 6-8 Prime Program – Feeder Schools: Hubbard, Summerhill, and Lincoln
- ❖ Grades 6-8 Late Immersion Program – Feeder schools: Geary, Gagetown, Hubbard, Sunbury West, Summerhill, and Lincoln
- ❖ Wolastoqey Language Program



PROVINCIAL ASSESSMENT RESULTS

Provincial Assessment Results for Ridgeview Middle School (6-8)								
Grade	Assessment	Target 2025	% at Appropriate and Above					
			Province 2022-23	District 2022-23	School 2022-23	School 2021-22	School 2020-21	
K-5	4	English Reading	90%					
		Scientific Literacy	90%					
	5	Mathematics	90%					
		FSL Reading Early FI	90%					
6-8	6	English Reading	90%	69.3%	69.9%	70.5%	78.9%	61.3%
		Scientific Literacy	90%	72.5%	70.8%	68.1%	68.3%	-
	7	Mathematics	90%	43.6%	42.7%	27.9%	-	-
		FSL Reading Early FI	90%	66.9%	72.0%	NR	-	-
		FSL Reading Late FI	90%	57.9%	71.1%	80.0%	-	-
		FSL Reading PIF	90%	26.9%	28.7%	37.1%	-	-
9-12	9	Reading (ELPA)	90%					
	10	FSL Reading Early FI	90%					
		FSL Reading Late FI	90%					
		FSL Reading PIF	90%					



SPECIAL EVENTS THAT ENCOURAGE COMMUNITY SCHOOL PARTNERSHIPS

- Breakfast, snack, and lunch programs
- Parent School Support Committee
- Gift Card Blitz to support RMS families
- Ridgeview Food Drive to support the Food Bank
- Volunteer Coaches
- Remembrance Day Ceremonies (Legion, Cadets/Scouts/Guides, Student presenters)
- Indigenous Awareness Activities
- SPARK (Students Participating in Arts, Recreation, Knowledge) @ CFB Gagetown, Oromocto Galleria, Oromocto Special Care Home, Gage Golf & Curling Club, SPCA
- Denim Day (Breast Cancer Research)
- Pride Week
- John Wood Foundation Fundraisers





SPECIAL EVENTS THAT ENCOURAGE COMMUNITY SCHOOL PARTNERSHIPS CONTINUED...

- Terry Fox Walk
- Walk 'n Roll
- Relay for Life
- Pink Shirt Day
- #BeccaToldMeTo movement
- Rock Your Socks Day (Down Syndrome)
- Blue and Yellow Revue (Variety Show)
- Orange Shirt Day
- Truth and Reconciliation Day





SPECIAL EVENTS THAT ENCOURAGE COMMUNITY SCHOOL PARTNERSHIPS CONTINUED...

- UNB Math Competition (OHS/HP)
- UNB/STU Internship Programs
- OHS Co-op Students
- Neil Squires
- CFB Gagetown Surplus Furniture partnership
- Diversity and Respect Week
- Elders' Tea



SPECIAL EVENTS THAT ENCOURAGE COMMUNITY SCHOOL PARTNERSHIPS CONTINUED...



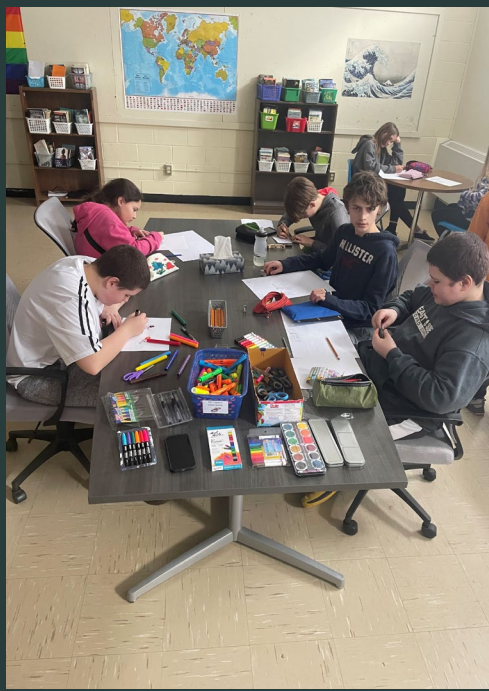
- Drama Productions
- Ring a Bell for Mental Health
- UNB STEM Afterschool Program
- Field Trips (CFB Gagetown, Playhouse, Saint John Aquatic Centre, Magic Mountain, etc.)
- Student Leaders support schoolwide feeder school events
- RMS Alumni teach First Nations dance and drumming
- Elders share their teachings (basket weaving, smudging, regalia, artwork, Moosehide Campaign, Red Dress Campaign)
- UNB Nursing student internship

SPECIAL EVENTS THAT ENCOURAGE COMMUNITY SCHOOL PARTNERSHIPS CONTINUED...



- Buddy reading with feeder schools
- Meet the Teacher Night/Popsicle Party
- Flag ceremony
- Collaboration with the OFN community to make flower boxes for the Elders
- Monthly Student Recognition Ceremonies
- Bilingual Pride Week





STUDENT VOICE

- Student Leadership initiatives
- Monthly calendar to promote school activities/celebrations
- Classroom meetings to build community
- Student of the Month “Lunch and Learn”
- Pink Shirt Day
- Theme Days/Dances
- SPARK
- Monthly Student Forums
- Student Led Clubs
- BIPOC
- GSA
- Best Buddies
- Unified Basketball
- Intramural Program
- Ridgeview Roars
- Club Hub
- Youth Check in Survey
- Student Wellness Survey



Ridgeview Middle School

SCHOOL BENEFITS

As a 6-8 school...

We have an established breakfast, snack, and lunch program to support all students' nourishment.

We have dedicated volunteer coaches for our sports teams.

Team focused – staff participate in grade level, PLC, Core Leadership, and full staff meetings to strengthen our school community.

Our First Nations Language and Culture Teacher provides Wolastoqey Language and Culture activities and First Nations Enhancement.

We have a strong culture of SEL (Social Emotional Learning).



SCHOOL BENEFITS CONTINUED...

- Staff Volunteers for Spacious/interactive Fine Arts Room
- Dances, Grade 8 Quebec Trip, Student Clubs, Sports' Teams, Tigers on the Prowl, etc.
- Proximity to Town of Oromocto and CFB Gagetown resources (Mackenzie Field, LeRoy Washburn Turf/Track, ball fields, tennis courts, King's Arrow Arena, Hazen Park, Gateway Wetlands/Trail, NB Trail System, etc.)
- Gaga pit, playground structure, basketball courts and soccer fields outside
- Computer labs and two computer carts
- Culinary space for student programming
- Library and Library Assistant
- Morning programs – Social Club, Rise and Shine (open gym), and Library Club
- Chartwell's Cafeteria Services
- Woodshop





SCHOOL CHALLENGES



- Accessibility (one wing has no elevator, not all entrances/exits have ramps)
- Intercom/communication system
- Limited parking for staff and visitors
- Limited storage
- Limited classroom space
- Limited IT Infrastructure
- Lack of meetings spaces
- Student drop off semi-circle is small
- Lack of office spaces
- Lack of spectator space in the gym

SCHOOL CHALLENGES CONTINUED...

- Limited washroom facilities for staff/poor locations of washrooms for staff
- Lack of dedicated Science Lab
- Gym sharing
- Outdated bells/clock system
- Ventilation (no mechanical ventilation system)
- Cafeteria space
- Boiler/Heat concerns (at times)
- Aged infrastructure



BUILDING CHALLENGES- HEALTH & SAFETY

- ❖ There is no mechanical ventilation system. HEPA (high efficiency particulate air) units in place since January 2022.
- ❖ There is no sprinkler system (automatic fire suppression system); there is a fire prevention alarm system in the facility.



BUILDING SUMMARY

- ❖ Initially constructed in 1958. Addition: 1966
- ❖ Owned by the Province of New Brunswick since 1967.
- ❖ Cleaning services (janitorial) provided by Contract Cleaning Company
- ❖ Heating system is hot water boiler with natural gas.
- ❖ The school is a brick/concrete structure.
- ❖ It is a two-storey building and the school space is 5508 square meters.
- ❖ Land ownership around the school is commercial and residential.
- ❖ There are no environmental concerns.
- ❖ The school has a gymnasium.
- ❖ There is an elevator in service in one wing.
- ❖ Playground is with various apparatus with a field.
- ❖ Heating system improvements in 2000, 2009, 2010, 2011, 2013, 2014, 2019.
- ❖ Fire integrity projects in 2000, 2006, 2007, 2015.
- ❖ Electrical system upgrades in 2002, 2003.
- ❖ Site improvements in 2003, 2004, 2009.
- ❖ Interior improvement in 2005, 2006, 2008.
- ❖ Exterior improvement in 2011, 2020, 2022.
- ❖ Washroom upgrades in 2006, 2007, 2009.
- ❖ Water supply distribution in 2012.
- ❖ Lighting upgrades in 2018.
- ❖ Roof replacements in 2020.



BUILDING SUMMARY

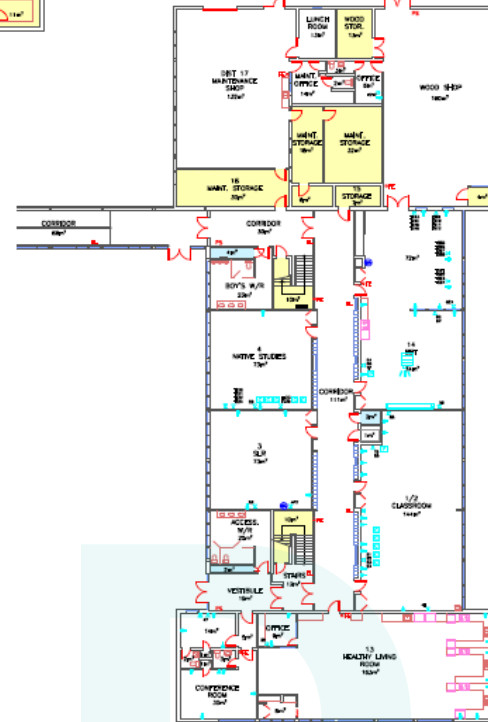


FIRST FLOOR PLAN
ORIGINAL WING
(SCALE: 1/32"=1'-0")



BASEMENT PLAN
ORIGINAL WING
(SCALE: 1/32"=1'-0")

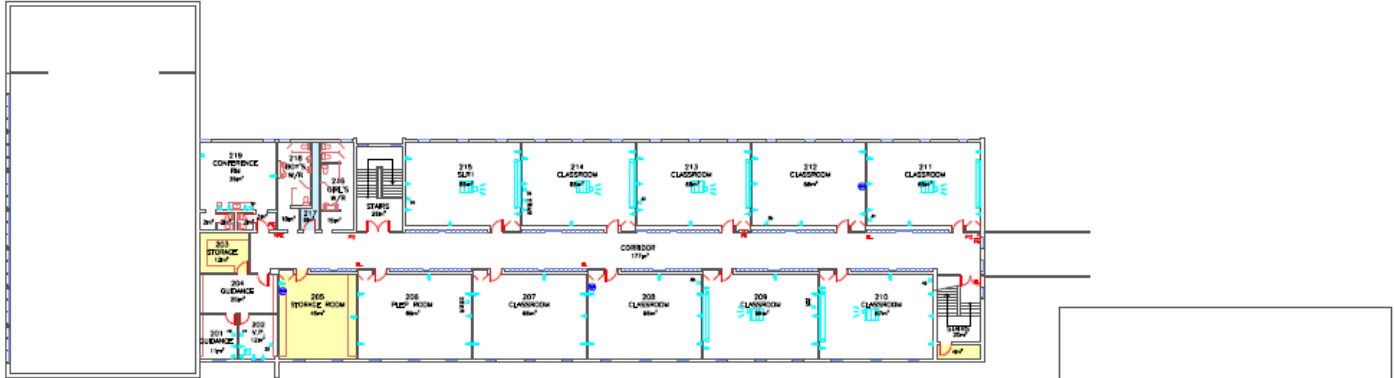
- STORAGE
- MECHANICAL / ELECTRICAL
- LABORATORIES
- WATER / SPRINKLER



FIRST FLOOR PLAN
ADDITION
(SCALE: 1/32"=1'-0")

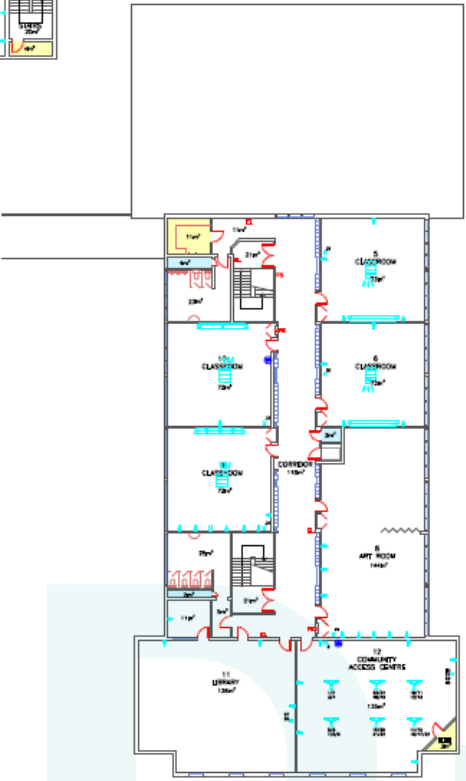


BUILDING SUMMARY



SECOND FLOOR PLAN
ORIGINAL WING
(SCALE: 1/32"=1'-0")

- STORAGE
- MECHANICAL / ELECTRICAL
- LABORATORIES
- WATER / SPRINKLER



SECOND FLOOR PLAN
ADDITION
(SCALE: 1/32"=1'-0")



ASD-W
Anglophone School District West

FUNCTIONAL CAPACITY DATA

Room Details

Number of Classrooms: 27
Number of Modulars: 0

Number of classrooms (excluding modulars) and number of modulars on-site.

Capacity Information



45%

The functional capacities of the school both excluding, and including spaces provided by modular buildings (where applicable), divided by the total enrolment at the school as of September 30th, 2022. The graph displays the utilization rate inclusive of modular capacities. Data Verified: Jan. 30th, 2023

Surplus Student Spaces



434

The extent to which the school's 2022-23 enrolment compares to its functional capacity of available student spaces (excluding modulars). A negative value indicates a shortfall of permanent student spaces compared to total enrolment. A positive value indicates a surplus of student spaces available compared to the total enrolment. Data verified: Feb. 2023

CAPITAL INVESTMENTS

School Year	Project	Capital Improvements
2000-2001	Boiler	\$ 161,236
2000-2001	Fire Integrity	\$ 42,132
2002-2003	Electric Service Entrance	\$ 1,087
2003-2004	Electric Service Entrance	\$ 36,721
2003-2004	Site Improvement	\$ 6,874
2004-2005	Electric Service Entrance	\$ 18,945
2004-2005	Site Improvement	\$ 87,408
2005-2006	Gym Floor	\$ 15,179
2006-2007	Fire Integrity	\$ 2,094
2006-2007	Gym Floor	\$ 8,266
2006-2007	Interior Renovation	\$ 8,630
2006-2007	Washroom Upgrade	\$ 9,965
2007-2008	Fire Integrity	\$ 109,473
2007-2008	Washroom Upgrade	\$ 149,460
2008-2009	Interior Accessibility	\$ 10,052
2008-2009	Washroom Upgrade	\$ 13,455
2009-2010	Heating System	\$ 21,046
2009-2010	Site Improvement	\$ 84,582

CAPITAL INVESTMENTS (Continued)

School Year	Project	Capital Improvements
2009-2010	Washroom Upgrade	\$ 85,728
2010-2011	Heating System	\$ 327,209
2011-2012	Heating System	\$ 219,933
2011-2012	Masonry - Brick Repointing	\$ 5,000
2012-2013	Water Supply and Distribution	\$ 171,175
2013-2014	Boiler	\$ 25,730
2014-2015	Boiler	\$ 9,342
2014-2015	Heating System	\$ 13,907
2015-2016	Fire Integrity	\$ 78,639
2017-2018	Exhaust	\$ 27,951
2018-2019	Lighting	\$ 167,992
2018-2019	Remediation	\$ 19,578
2019-2020	Boiler	\$ 115,815
2020-2021	Exterior Window	\$ 57,009
2020-2021	Masonry - Brick Repointing	\$ 8,127
2020-2021	Roof Replacement	\$ 264,257
2022-2023	Building Envelope	\$ 123,000
Total		\$2,506,997

PHYSICAL PLANT STATUS

School Physical Plant Review / Report by School

School: Ridgeview Middle School (ASD-W)		Grades: 6-8		Year Built: 1958
ASD-W	School No: 2512	City/Village: Oromocto	Enrolment:339	Total Area (m2): 5508
Mechanical and Electrical Systems		Description	Priority	Est. Cost
Heating and Ventilation	Ventilation System	Ventilations system upgrade. 5508 sqm. NOTE: Estimated costs updated in Aug'11.	2	\$1,130,000.00
			Sub Total (Category)	\$1,130,000.00
Building Interior and Additions		Description	Priority	Est. Cost
Interior Accessibility	Lift	Elevator #2 of 2 including bldg access. NOTE: Estimated costs updated in Aug'11.	2	\$225,000.00
Interior Alterations and Renovations	Washrooms	Renovate 2 girls washrooms new wing -PH3 49 sqm. NOTE: Estimated costs updated in Aug'11.	2	\$106,000.00
Interior Finishes	Interior Doors	Install new door hardware on all classroom doors. If district was to do the work cost would be approximately \$13000.00.	1	\$25,000.00
Interior Finishes	Other	Refinish and reline gym floor	2	\$17,500.00
			Sub Total (Category)	\$373,500.00
Building Exterior and Site		Description	Priority	Est. Cost
Site	Site Improvement	Repave and install new curbs. Staff entrance all the way around to the shop. This does not include the staff parking area.	1	\$173,000.00
Site	Site Improvement	Repave staff parking lot, includes new roll down curbs.	2	\$110,985.00
			Sub Total (Category)	\$283,985.00
				SCHOOL TOTAL
				\$1,787,485.00

FACILITIES OPERATIONAL COSTS

FISCAL YEAR 2022/2023	FACILITIES COST
Electricity	\$ 66,413.80
Water/Sewage	\$ 34,441.70
Garbage Removal	\$ 2,653.93
Snow Plowing	\$ 6,000.00
Natural Gas	\$ 71,538.13
Cleaning Supplies/Services	\$ 4,890.78
Minor Repairs/Renovations	\$ 16,409.11
TOTAL	\$ 202,347.45

FACILITIES OPERATIONAL COSTS

Per Sq. M. Utility Costs

Average: \$30



\$26

Total fiscal year operating costs for each school site divided by the size of the building footprint. Includes power, sewage, garbage, heating, maintenance... etc. Value is dollars per square metre. Source: Facilities Data (calculated) Feb. 2023

Per Pupil Operating Costs

District Avg.: \$599



\$414

Total 2021-22 fiscal year operating costs divided by the total enrolment of the school as of Sept. 30th 2022. Source: Facilities Data (calculated) Feb. 2023

ASSIGNED BUDGETS

Total Budget

Previous Year: \$36,846
Change from Prev. YR:
+\$694



\$37,540

Total 2022-23 school budget allocation, as well as previous school year (excludes staffing, facility and energy op. costs). Source: Budget and Accounting Office April 2023

Budget per Student

Average: \$122



\$111

Total instructional and programming budget for 2022-23 school year, divided by the total student enrolment of the previous year. Budget excludes staffing, facility and energy op. costs. Source: Budget and Accounting Office April 2023

Instructional Budget

\$28,097

School budget related to instructional cost categories for the 2022-23 school year (e.g. Technology, textbooks, library, printing, misc. equipment, travel costs... etc.) Excludes staffing costs. Source: Budget and Accounting Office April 2023

PSSC Budget

\$1,050

Budget for the Parent School Support Committee (PSSC) at this school during the 2022-23 school year. Source: Budget and Accounting Office April 2023



TOTAL ESTIMATED SALARY COSTS

Staff Summary

Total FTE: 41.0

Education Staff FTE: 24.1

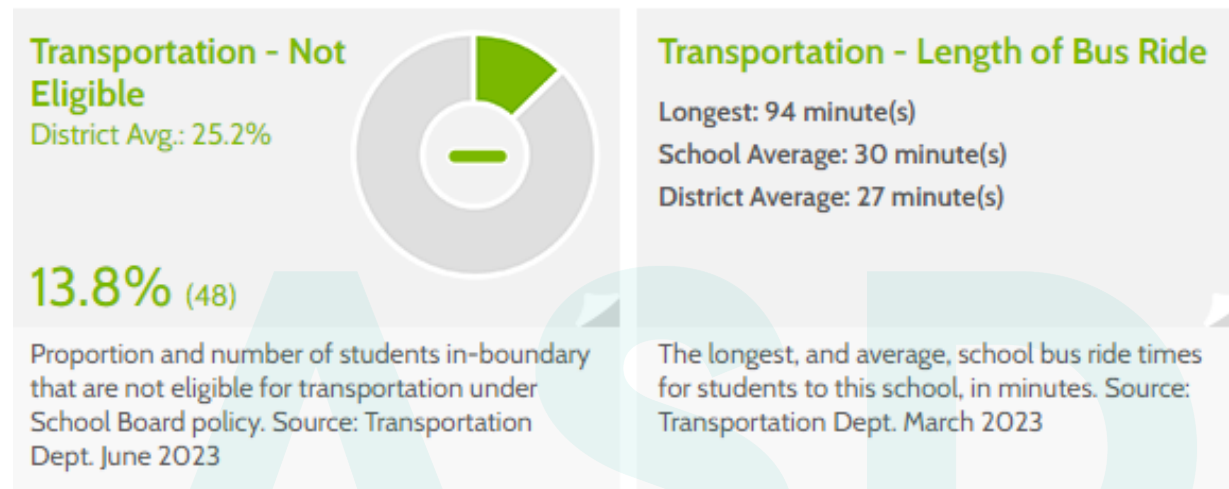
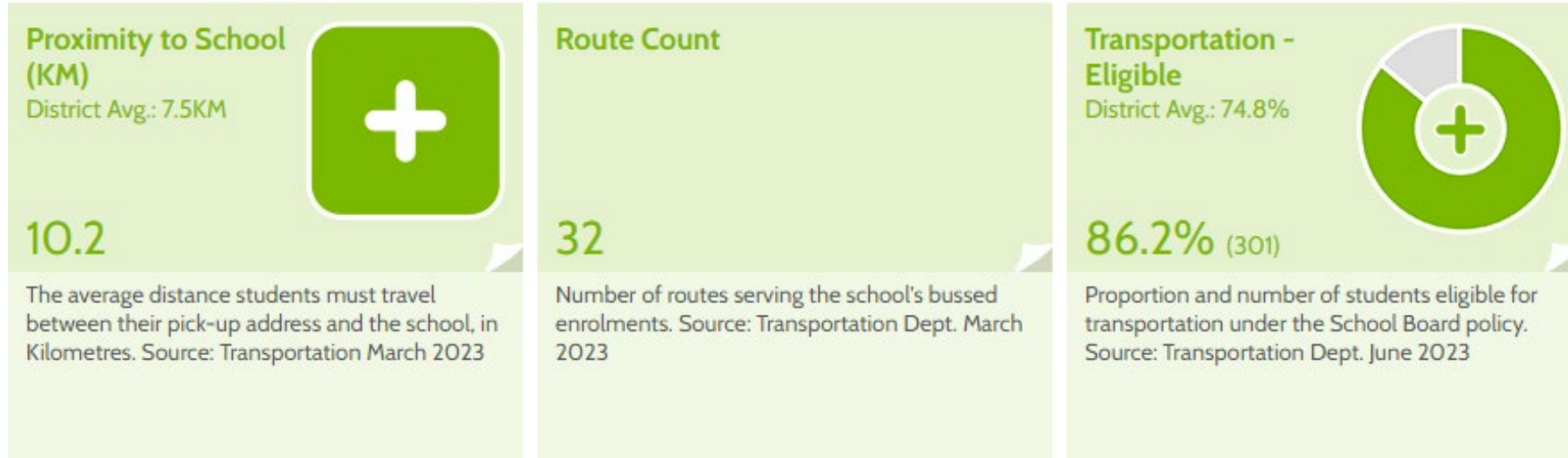
Support Staff FTE: 16.9

Total Estimated Salary Cost: \$2,675,064

FTE (Full Time Equivalent) and estimated salary cost of total staff at this school. Displaying breakdown of FTE into education (teachers) and support staff categories (support includes administrative, classroom support, custodian... etc.). Data as of April 2023.



TRANSPORTATION





IMPACT ON THE LOCAL COMMUNITY AND ECONOMIC DEVELOPMENT

- ❖ Turning over an aged infrastructure to GNB for future considerations (for example, continued government use, sale of the building for development, demolition and future use of land)
- ❖ Potential addition of a brand-new facility within the Town of Oromocto resulting in improved community space outside instructional hours
- ❖ Attraction of families to the community when considering moving/postings and wanting children to attend a new, modern school



POSSIBLE CONSIDERATIONS INCLUDING IMPACT ON OTHER SCHOOLS:

FROM THE 2018 ERNST & YOUNG REPORT, THE FOLLOWING 5 SCENARIOS WERE PRESENTED:

- ❖ Close all schools within scope and replace them with a new 6-8 middle school and two K-5 elementary schools.
- ❖ Close all schools within scope and replace them with two new K-8 schools.
- ❖ Close all schools within scope and replace them with three new K-8 schools.
- ❖ Review the existing two middle schools compared to the EECD Planning Guidelines for Educational Facilities to determine what/if any space is deficient to the guidelines for a possible school addition and/or amalgamation in a mid-life upgrade scenario in conjunction with two new elementary schools.
- ❖ Close all schools within scope and replace them with a new K-2 Elementary, a new 3-5 school, and a new 6-8 school.

OUR VISION FOR NEW SCHOOLS

- ❖ 32 General instruction classrooms
- ❖ Guidance/visiting professionals' offices
- ❖ 4 Kindergarten classrooms
- ❖ Student government room
- ❖ 1 Early Childhood development room
- ❖ Library/media centre
- ❖ 2 Multi-function classrooms
- ❖ Cafeteria/kitchen/stage
- ❖ MSTE spaces
- ❖ Recycling room
- ❖ Science room
- ❖ Administration space
- ❖ Resource/special care classrooms
- ❖ Personnel centre with staff lounge
- ❖ Student/project work areas
- ❖ Play areas and playfield
- ❖ Music rooms
- ❖ Art room
- ❖ Performing arts/theatre classroom
- ❖ 2 Gymnasiums of 591 m² with change rooms and ancillary spaces

*Recent K-8 School Construction – capacity of 650 students



QUESTIONS AND ANSWERS



ASD-W
Anglophone School District West



NEXT STEPS

- Public Meeting # 2 - to be held as series of subgroup meetings as follows:
 - Saturday Morning, March 16, 2024- Assiniboine Avenue Elementary School, Burton Elementary School, **Hubbard Elementary School (Venue)**.
 - Saturday Afternoon, March 16, 2024- Gesner Street Elementary School, **Summerhill Elementary School (Venue)**.
 - Saturday Morning, March 23, 2024- Morning session for presentations on Harold Peterson Middle School and **Ridgeview Middle School (Venue)**.
- Public Meeting # 3 – Evening of Thursday, May 9, 2024. A special District Education Council Meeting open to the public, where members will hold final conversations on the study, present a motion, and vote on the recommended conclusion.
- Government considers the recommendation and makes a decision.
- For full detail and documentation of this study and its processes, please visit www.asdw.nbed.ca



THANK YOU

David McTimoney – Superintendent

Special Thanks to Paul MacIntosh, Shawn Tracey, Susan Young, School Principals, and their teams for the creation of this presentation.