

• • •

SUSTAINABILITY STUDY - HUBBARD ELEMENTARY SCHOOL



→ SATURDAY, JANUARY 27, 2024



PUBLIC MEETING #1 AGENDA

- Introductions
- Review of Provincial Policy 409 Multi-Year School Infrastructure Planning
- Presentation of Information – Hubbard Elementary School
- Question and Answer Period
- What's Next?
 - Online Resources
 - Next Meetings





INTRODUCTION

- ASD-W and EECD had initiated a review of schools in the Oromocto Education Centre area to examine potential scenarios for long-term infrastructure planning. The review found five potential scenarios for updating school infrastructure in the area, based on population growth and student enrolment numbers. These infrastructure plans have now reached a point where they have been recorded on the Stable Departmental Infrastructure Priorities (SDIP) list, under the name Oromocto K-8 Rationalization. In order to take next steps in the process, ASD-W is required to conduct a sustainability study as outlined in provincial Policy 409-Multiyear School Infrastructure Planning.



PROVINCIAL POLICY 409

MULTI-YEAR SCHOOL INFRASTRUCTURE PLANNING

- Outlines a number of responsibilities to do with facilities in our system
- Sections 6.4, 6.5, 6.6, and 6.7 are relevant for sustainability studies
- Three public meetings are required as outlined:
 - Meeting 1 – Presentation of information from District regarding school
 - Meeting 2 – Presentation from stakeholders regarding their thoughts on the sustainability of the school and relevant factors
 - Meeting 3 – Final review of information by District Education Council (DEC) and subsequent motion on next steps.



PROVINCIAL POLICY 409

MULTI-YEAR SCHOOL INFRASTRUCTURE PLANNING

- There are several potential outcomes as described in section 6.4.3 of the policy, including:
 - Maintaining the status quo
 - Repairing the school
 - Grouping schools together
 - Closing the school
 - Placing some students elsewhere



INFORMATION TO BE PRESENTED

- Enrolment
- Quality of Education Programs & Services
- Transportation
- Finances
- Impact on Other Schools
- Building Challenges/ Health & Safety
- Impact on Local Community
- Economic Development
- Ernst & Young Report

ENROLMENT

Total Enrolment
2022-23



322

Number of pupils attending the school. The graph represents up to 6 years of total enrolment history at the school.

Projected Utilization
in 5 years
(Projected Enrolment)



56% (282)

Proportion of the school's capacity projected to be in use 5 years from now.

ENROLMENT BY GRADE LEVEL

October 1, 2023

	English Prime	Early French Immersion (Gr. 1 Entry)	Total
3	79	21	100
4	84	30	114
5	69	31	100
			314

MAXIMUM CLASS SIZES

Grade Level	Maximum Student Count
Kindergarten – Grade 2	21
Grade 3	26
K – 3 Combined Classes	16
Grade 4 – 6	28
Grades 3 – 5 Combined Classes	23
Grades 7 – 12	29
Grades 5 – 12 Combined Classes	24

QUALITY OF EDUCATION PROGRAMS & SERVICES

Student to Teacher Ratios

Year	Provincial Staffing Formula		Actual	
	Total Students : Total Teachers	Students : Teachers	Total Students : Total Teachers	Students : Teachers
2023-2024	314 : 19.03	16.60 : 1	314 : 20.6	15.24 : 1



CORE CURRICULUM AND SUPPORTS

Hubbard Elementary School	
Early French Immersion	Yes
Late French Immersion	N/A
Music and or Fine Arts Specialists	Yes
EST - Resource	Yes
EST - Guidance	Yes
Academic Support Teacher	Yes
District Curriculum Lead Coach Team	Provides Support to Schools through Subject Coordinators
Behaviour Intervention Mentor	Yes
Science Lab	No
Computer Lab	No
Gymnasium	Yes

QUALITY OF EDUCATION PROGRAMS & SERVICES

- ❖ Hubbard Elementary is a grades 3 to 5 school, for English Prime and French Immersion
- ❖ Our feeder schools are Burton Elementary and Assiniboine Avenue Elementary
- ❖ Students from Geary, Gagetown and Fredericton Junction attend for French Immersion
- ❖ The majority of our students attend Harold Peterson or Ridgeview Middle School, depending on zoning and program



PROVINCIAL ASSESSMENT RESULTS

Provincial Assessment Results for Hubbard Elementary School (3-5)								
Grade	Assessment	Target 2025	% at Appropriate and Above					
			Province 2022-23	District 2022-23	School 2022-23	School 2021-22	School 2020-21	
K-5	4	English Reading	90%	56.6%	56.0%	56.9%	67.2%	75.7%
		Scientific Literacy	90%	74.9%	75.4%	83.5%	82.5%	-
	5	Mathematics	90%	50.2%	51.6%	55.6%	-	-
		FSL Reading Early FI	90%	73.4%	77.1%	63.6%	-	-
6-8	6	English Reading	90%					
		Scientific Literacy	90%					
	7	Mathematics	90%					
		FSL Reading Early FI	90%					
		FSL Reading Late FI	90%					
	8	FSL Reading PIF	90%					
9-12	9	Reading (ELPA)	90%					
	10	FSL Reading Early FI	90%					
		FSL Reading Late FI	90%					
		FSL Reading PIF	90%					

SPECIAL EVENTS THAT ENCOURAGE COMMUNITY SCHOOL PARTNERSHIPS

- ❖ Parent Group
- ❖ Breakfast Program, serving approximately 80 students per day
- ❖ Cafeteria service
- ❖ Terry Fox Run
- ❖ Halloween Fun Night
- ❖ Family Literacy Night
- ❖ School facilities used by Girl Guides, Scouts, Pickle Ball group, Local hockey teams, Softball teams
- ❖ Young Entrepreneurship Showcase
- ❖ Elders Tea
- ❖ Estey Art Program
- ❖ Guest teachers for drumming, dancing, beading and sewing





SPECIAL EVENTS THAT ENCOURAGE COMMUNITY SCHOOL PARTNERSHIPS CONTINUED...

- ❖ Literacy Day Read In
- ❖ Remembrance Day ceremony hosted by the Oromocto Legion
- ❖ Christmas Concerts
- ❖ Parent School Support Committee
- ❖ Literacy Day Read In
- ❖ Heritage Fair
- ❖ Special events supporting the Oromocto Food Bank
- ❖ UNB Worlds UNBound Girls Club
- ❖ TNB Young Company
- ❖ Career Fair
- ❖ Oromocto SPCA



STUDENT VOICE



❖ Pink Shirt Day

❖ Spirit Week

❖ Orange Shirt Day

❖ Student Led Clubs

❖ Intramurals

❖ WITS Warriors





STUDENT VOICE Continued

- ❖ Student Leaders for special events
- ❖ Student focus groups
- ❖ Enrichment Clusters
- ❖ Student choice in various initiatives throughout the school
- ❖ Reader Leaders



SCHOOL BENEFITS

- ❖ As a 3 – 5 school, it allows us to focus our school improvement planning around a specific age group.
- ❖ Being a medium sized school allows us to provide wrap around support for students' needs and interests
- ❖ Team level is strong , as there are multiple teachers in each grade
- ❖ Strong PSSC and Parent Group Support
- ❖ Enhancement school with a strong relationship with the Oromocto Frist Nation
- ❖ Fully functional cafeteria



SCHOOL BENEFITS CONTINUED....

- ❖ Being a grade 3 to 5 school, we have a strong school spirit with many school related activities (Sock Hops, Talent Shows, Student-led Clubs)
- ❖ Full Intramural program
- ❖ Being situated in this community, many students play on the same sports team. This adds to the students' sense of belonging
- ❖ Being a medium sized school allows teachers to get to know all students, not just those in their classroom
- ❖ Close proximity to community services such as CFB Gagetown, Public Library, Gateway Wetlands, SPCA, OHS, Fire Station, Police Station, K -2 schools

Hubbard Elementary School



SCHOOL CHALLENGES

- ❖ Fluctuating enrolment
- ❖ Physical space is limited
- ❖ Not having access to K-2 onsite subject matter experts that can transfer expertise into grades 3 – 5 classrooms
- ❖ Electrical make-up of the school does not support modern technology (i.e., not enough plugs in classrooms)
- ❖ Aging infrastructure requires regular maintenance requests
- ❖ Building is not aesthetically pleasing

BUILDING CHALLENGES- HEALTH & SAFETY

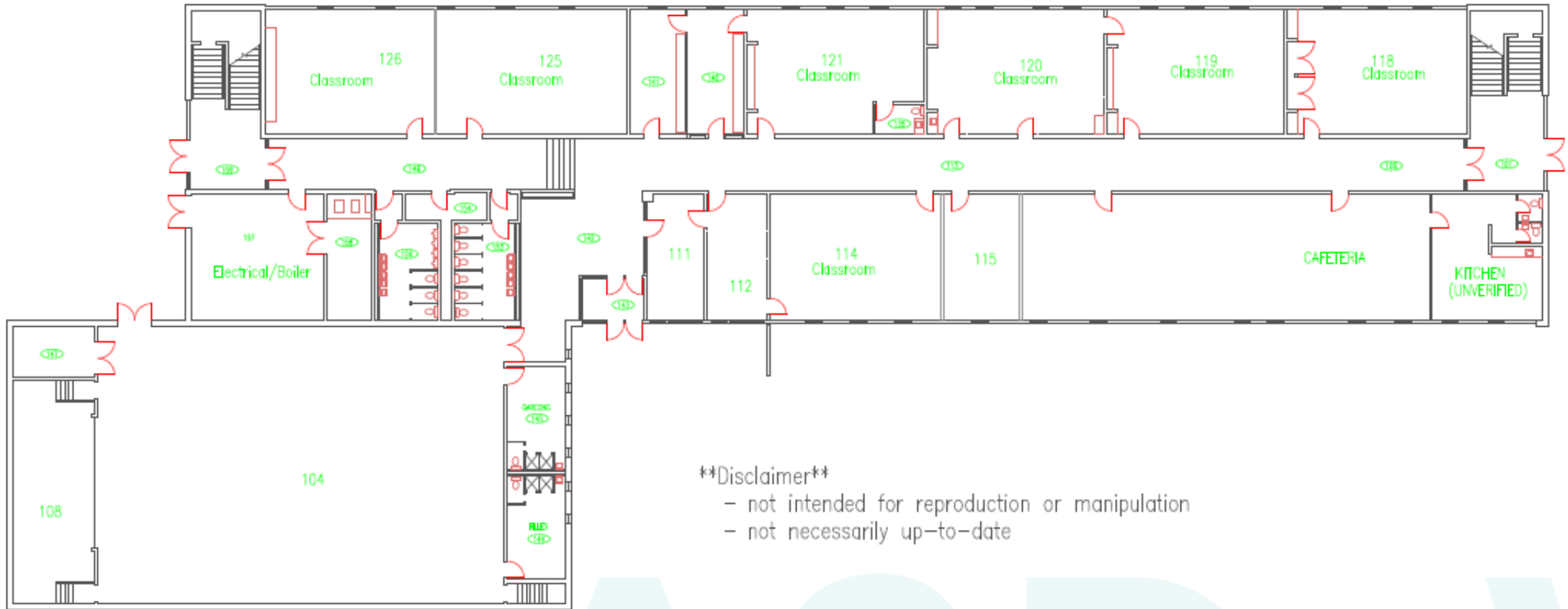
- ❖ There is no mechanical ventilation system. HEPA (high efficiency particulate air) units in place since January 2022.



BUILDING SUMMARY

- ❖ Initially constructed in 1957.
- ❖ The building is a former francophone school: Arc-En-Ciel.
- ❖ Students moved into the new location in March 2021.
- ❖ Cleaning services (janitorial) provided by Contract Cleaning Company
- ❖ Heating system is hot water boiler with natural gas.
- ❖ The school is a brick/concrete structure.
- ❖ It is a two-storey building and the school space is 3068 square meters.
- ❖ There is a sprinkler system (automatic fire suppression system) and fire prevention alarm system in the facility.
- ❖ Land ownership around the school is commercial and residential.
- ❖ There are no environmental concerns.
- ❖ The school has a gymnasium and a cafeteria.
- ❖ There is an elevator in service.
- ❖ Playground is with various apparatus with a field.
- ❖ Heating and ventilation upgrades in 2000, 2001.
- ❖ Electrical upgrades in 2000.
- ❖ Interior renovation in 2001, 2008, 2021, 2022.
- ❖ Fire integrity projects in 2006, 2007.
- ❖ Site improvement in 2009, 2010.
- ❖ Roof replacement in 2006, 2015.

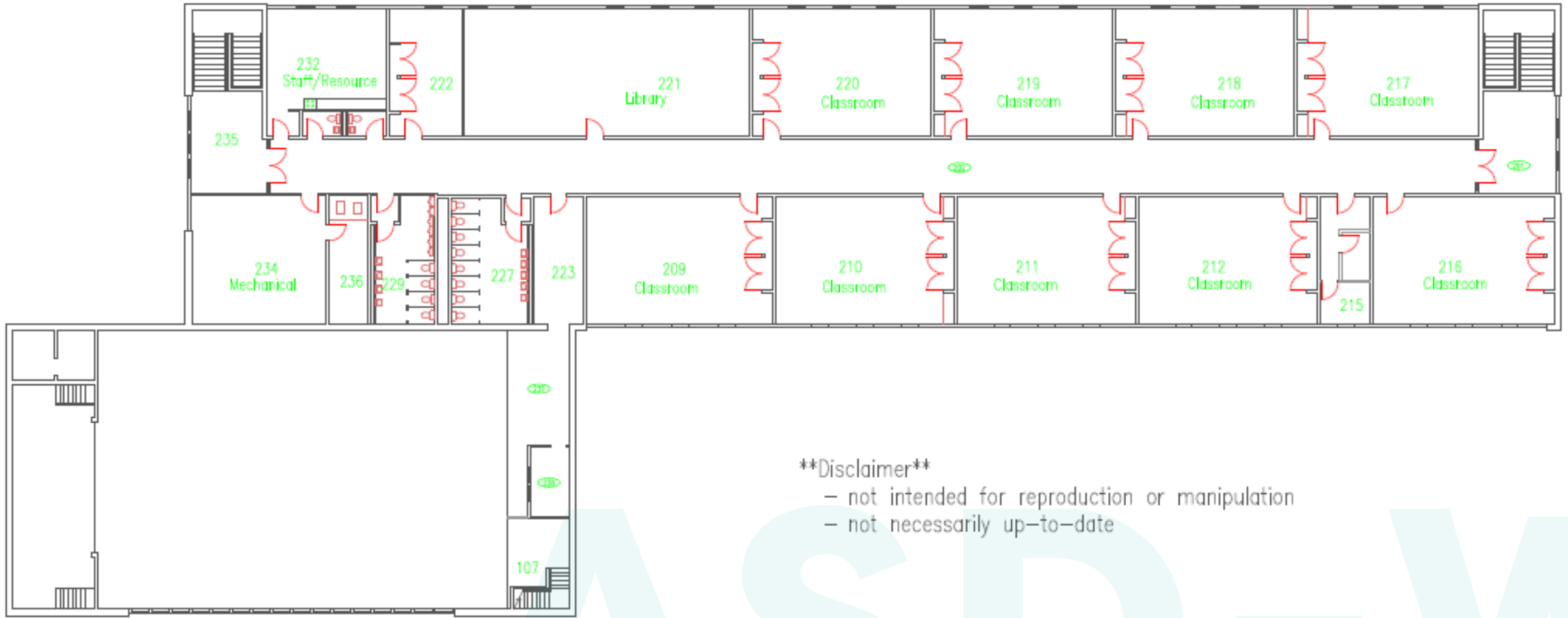
BUILDING SUMMARY



****Disclaimer****

- not intended for reproduction or manipulation
- not necessarily up-to-date

BUILDING SUMMARY



****Disclaimer****

- not intended for reproduction or manipulation
- not necessarily up-to-date


FUNCTIONAL CAPACITY DATA

Room Details

Number of Classrooms: 18
Number of Modulars: 0

Number of classrooms (excluding modulars) and number of modulars on-site.


Capacity Information



64%

The functional capacities of the school both excluding, and including spaces provided by modular buildings (where applicable), divided by the total enrolment at the school as of September 30th, 2022. The graph displays the utilization rate inclusive of modular capacities. Data Verified: Jan. 30th, 2023

Surplus Student Spaces



183

The extent to which the school's 2022-23 enrolment compares to its functional capacity of available student spaces (excluding modulars). A negative value indicates a shortfall of permanent student spaces compared to total enrolment. A positive value indicates a surplus of student spaces available compared to the total enrolment. Data verified: Feb. 2023

CAPITAL INVESTMENTS

School Year	Scope of Work	Cost
2000-2001	Heating and Ventilation	\$ 22,500
2000-2001	Electrical	\$ 92,353
2001-2002	Interior Renovation	\$ 7,882
2001-2002	Heating and Ventilation	\$ 223,072
2002-2003	Interior Renovation	\$ 74,067
2006-2007	Roof Replacement	\$ 131,436
2006-2007	Fire Integrity	\$ 21,833
2007-2008	Fire Integrity	\$ 310
2008-2009	Interior Improvement	\$ 27,530
2009-2010	Site Improvement	\$ 4,920
2010-2011	Site Improvement	\$ 47,241
2015-2016	Roof Replacement	\$ 82,000
Total		\$ 735,144

PHYSICAL PLANT STATUS

School Physical Plant Review / Report by School

School: Hubbard Elementary School (ASD-W)			Grades: 3-5	Year Built: 1957	
ASD-W	School No: 2509	City/Village: Oromocto	Enrolment:328	Total Area (m2): 4039	
Mechanical and Electrical Systems			Description	Priority	Est. Cost
Heating and Ventilation	Other		Complete the conversion of controls (thermostats) to a computerized system. Replacement of heating piping	2	\$135,000.00
Electrical	Security Systems		Install cameras inside and outside the school	1	\$32,000.00
				Sub Total (Category)	\$167,000.00
Fire Codes			Description	Priority	Est. Cost
Fire Prevention	Other		Install sprinkler system in the school	2	\$250,000.00
				Sub Total (Category)	\$250,000.00
Building Exterior and Site			Description	Priority	Est. Cost
Building Envelope	Other		Caulk brick and windows	1	\$74,000.00
				Sub Total (Category)	\$74,000.00
				SCHOOL TOTAL	\$491,000.00

FACILITIES OPERATIONAL COSTS

FISCAL YEAR 2022/2023	FACILITIES COST
Electricity	\$ 29,432.72
Water/Sewage	\$ 7,221.33
Garbage Removal	\$ 2,525.13
Snow Plowing	\$ 8,189.98
Natural Gas	\$ 32,661.60
Cleaning Supplies/Services	\$ 1,332.73
Minor Repairs/Renovations	\$ 31,838.80
TOTAL	\$113,202.29

FACILITIES OPERATIONAL COSTS

Per Sq. M. Utility Costs

Average: \$30



\$33

Total fiscal year operating costs for each school site divided by the size of the building footprint. Includes power, sewage, garbage, heating, maintenance... etc. Value is dollars per square metre. Source: Facilities Data (calculated) Feb. 2023

Per Pupil Operating Costs

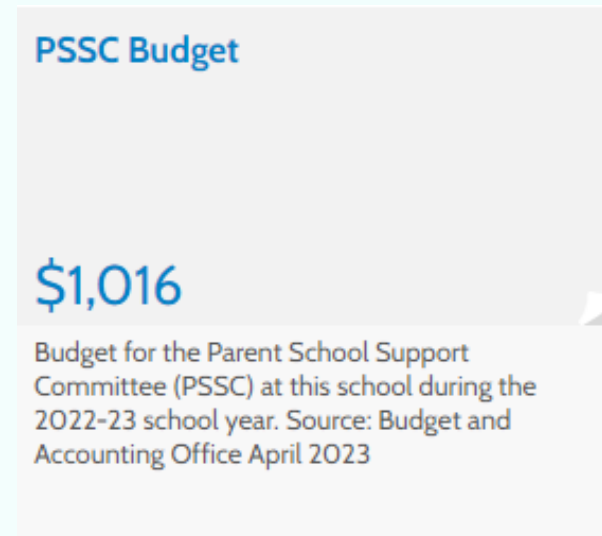
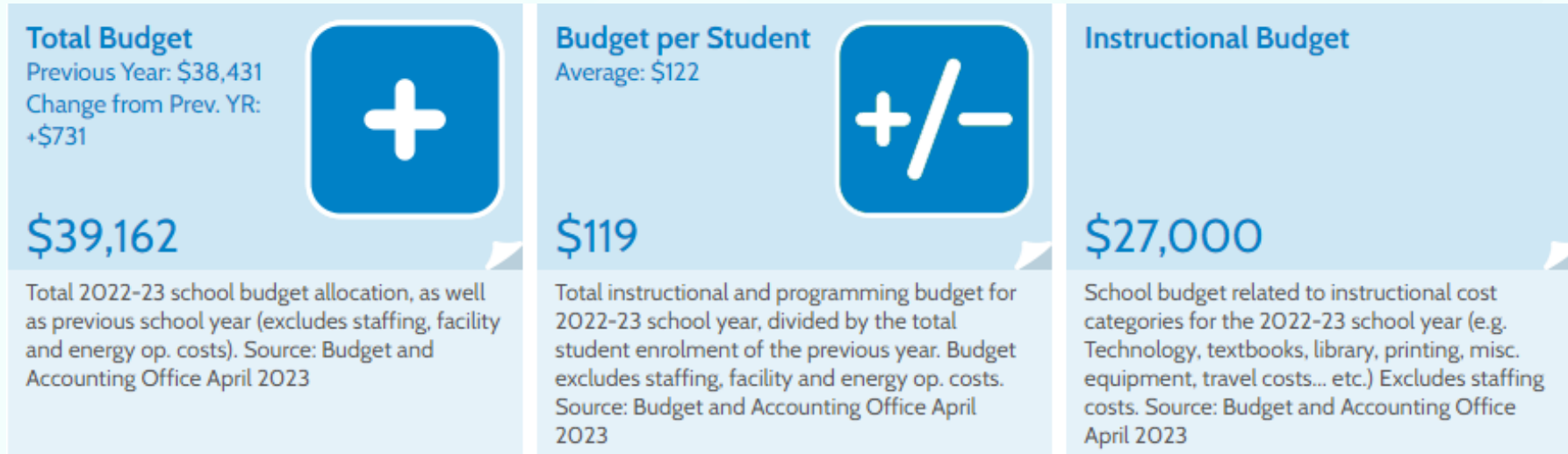
District Avg.: \$599



\$417

Total 2021-22 fiscal year operating costs divided by the total enrolment of the school as of Sept. 30th 2022. Source: Facilities Data (calculated) Feb. 2023

ASSIGNED BUDGETS





TOTAL ESTIMATED SALARY COSTS

Staff Summary

Total FTE: 36.6

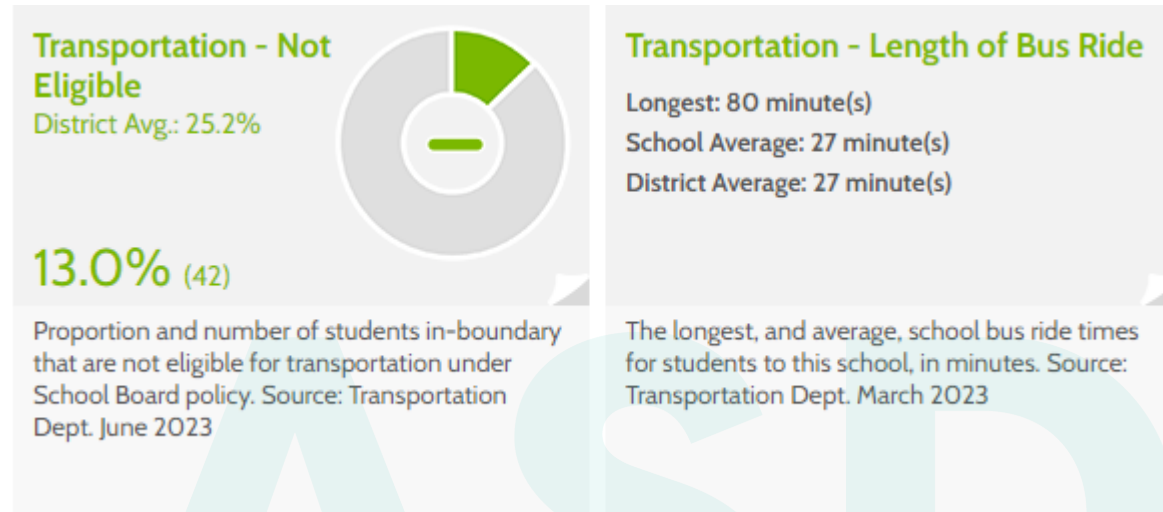
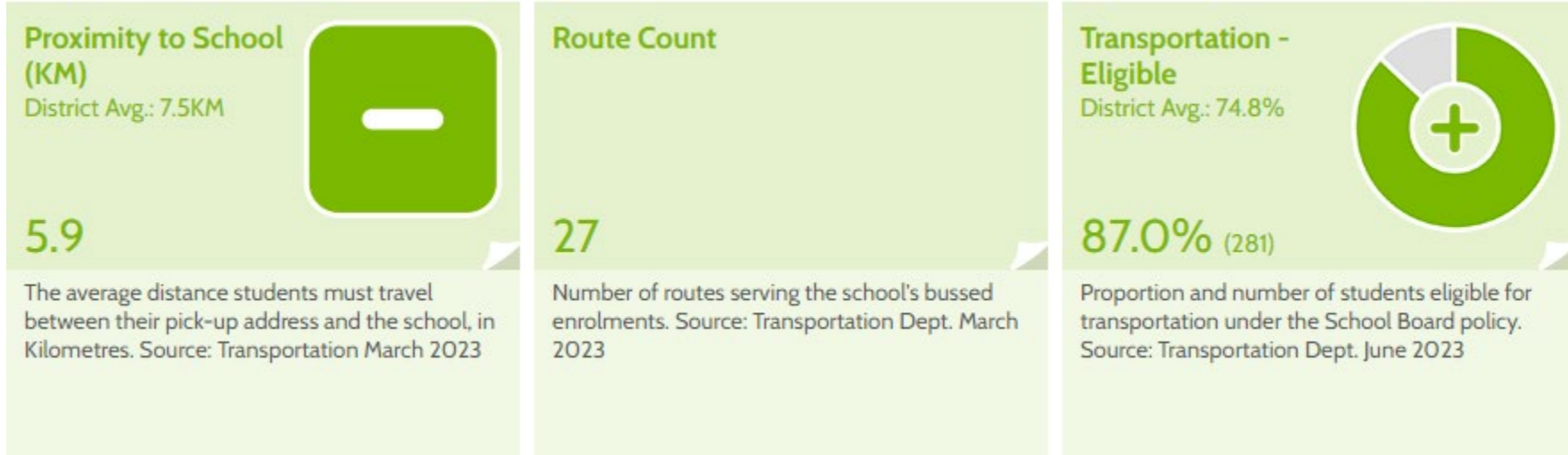
Education Staff FTE: 22.8

Support Staff FTE: 13.8

Total Estimated Salary Cost: \$2,439,325

FTE (Full Time Equivalent) and estimated salary cost of total staff at this school. Displaying breakdown of FTE into education (teachers) and support staff categories (support includes administrative, classroom support, custodian... etc.). Data as of April 2023.

TRANSPORTATION





IMPACT ON THE LOCAL COMMUNITY AND ECONOMIC DEVELOPMENT

- ❖ Turning over an aged infrastructure to GNB for future considerations (for example, continued government use, sale of the building for development, demolition and future use of land)
- ❖ Potential addition of a brand-new facility within the Town of Oromocto resulting in improved community space outside instructional hours
- ❖ Attraction of families to the community when considering moving/postings and wanting children to attend a new, modern school



POSSIBLE CONSIDERATIONS INCLUDING IMPACT ON OTHER SCHOOLS:

FROM THE 2018 ERNST & YOUNG REPORT, THE FOLLOWING 5 SCENARIOS WERE PRESENTED:

- ❖ Close all schools within scope and replace them with a new 6-8 middle school and two K-5 elementary schools.
- ❖ Close all schools within scope and replace them with two new K-8 schools.
- ❖ Close all schools within scope and replace them with three new K-8 schools.
- ❖ Review the existing two middle schools compared to the EECD Planning Guidelines for Educational Facilities to determine what/if any space is deficient to the guidelines for a possible school addition and/or amalgamation in a mid-life upgrade scenario in conjunction with two new elementary schools.
- ❖ Close all schools within scope and replace them with a new K-2 Elementary, a new 3-5 school, and a new 6-8 school.

OUR VISION FOR NEW SCHOOLS

- ❖ 2 Gymnasiums of 591 m² with change rooms and ancillary spaces
- ❖ 32 General instruction classrooms
- ❖ Guidance/visiting professionals' offices
- ❖ 4 Kindergarten classrooms
- ❖ Student government room
- ❖ 1 Early Childhood development room
- ❖ Library/media centre
- ❖ 2 Multi-function classrooms
- ❖ Cafeteria/kitchen/stage
- ❖ MSTE spaces
- ❖ Recycling room
- ❖ Science room
- ❖ Administration space
- ❖ Resource/special care classrooms
- ❖ Personnel centre with staff lounge
- ❖ Student/project work areas
- ❖ Play areas and playfield
- ❖ Music rooms
- ❖ Art room
- ❖ Performing arts/theatre classroom

*Recent K-8 School Construction – capacity of 650 students



QUESTIONS AND ANSWERS





NEXT STEPS

- Public Meeting # 2 - to be held as series of subgroup meetings as follows:
 - Saturday Morning, March 16, 2024- Assiniboine Avenue Elementary School, Burton Elementary School, **Hubbard Elementary School (Venue)**.
 - Saturday Afternoon, March 16, 2024- Gesner Street Elementary School, **Summerhill Elementary School (Venue)**.
 - Saturday Morning, March 23, 2024- Morning session for presentations on Harold Peterson Middle School and **Ridgeview Middle School (Venue)**.
- Public Meeting # 3 – Evening of Thursday, May 9, 2024. A special District Education Council Meeting open to the public, where members will hold final conversations on the study, present a motion, and vote on the recommended conclusion.
- Government considers the recommendation and makes a decision
- For full detail and documentation of this study and its processes, please visit www.asdw.nbed.ca



THANK YOU

David McTimoney – Superintendent

Special Thanks to Paul MacIntosh, Shawn Tracey, Susan Young, School Principals, and their teams for the creation of this presentation.