

SUSTAINABILITY STUDY -

HAROLD PETERSON MIDDLE SCHOOL



→ SATURDAY, JANUARY 27, 2024



PUBLIC MEETING #1 AGENDA

- Introductions
- Review of Provincial Policy 409 Multi-Year School Infrastructure Planning
- Presentation of Information – Harold Peterson Middle School
- Question and Answer Period
- What's Next?
 - Online Resources
 - Next Meetings





INTRODUCTION

- ASD-W and EECD had initiated a review of schools in the Oromocto Education Centre area to examine potential scenarios for long-term infrastructure planning. The review found five potential scenarios for updating school infrastructure in the area, based on population growth and student enrolment numbers. These infrastructure plans have now reached a point where they have been recorded on the Stable Departmental Infrastructure Priorities (SDIP) list, under the name Oromocto K-8 Rationalization. In order to take next steps in the process, ASD-W is required to conduct a sustainability study as outlined in provincial Policy 409-Multiyear School Infrastructure Planning.



PROVINCIAL POLICY 409

MULTI-YEAR SCHOOL INFRASTRUCTURE PLANNING

- Outlines a number of responsibilities to do with facilities in our system
- Sections 6.4, 6.5, 6.6, and 6.7 are relevant for sustainability studies
- Three public meetings are required as outlined:
 - Meeting 1 – Presentation of information from District regarding school
 - Meeting 2 – Presentation from stakeholders regarding their thoughts on the sustainability of the school and relevant factors
 - Meeting 3 – Final review of information by District Education Council (DEC) and subsequent motion on next steps.



PROVINCIAL POLICY 409

MULTI-YEAR SCHOOL INFRASTRUCTURE PLANNING

- There are several potential outcomes as described in section 6.4.3 of the policy, including:
 - Maintaining the status quo
 - Repairing the school
 - Grouping schools together
 - Closing the school
 - Placing some students elsewhere



INFORMATION TO BE PRESENTED

- Enrolment
- Quality of Education Programs & Services
- Transportation
- Finances
- Impact on Other Schools
- Building Challenges/ Health & Safety
- Impact on Local Community
- Economic Development
- Ernst & Young Report



ENROLMENT

Total Enrolment
2022-23



376

Number of pupils attending the school. The graph represents up to 6 years of total enrolment history at the school.

Projected Utilization
in 5 years
(Projected Enrolment)



50% (374)

Proportion of the school's capacity projected to be in use 5 years from now.

ENROLMENT BY GRADE LEVEL

October 1, 2023

	English Prime	Early French Immersion (Gr. 1 Entry)	Early French Immersion (Gr. 3 Entry)	Total
6	63	61		124
7	79	45		124
8	80		49	129
				377

MAXIMUM CLASS SIZES

Grade Level	Maximum Student Count
Kindergarten – Grade 2	21
Grade 3	26
K – 3 Combined Classes	16
Grade 4 – 6	28
Grades 3 – 5 Combined Classes	23
Grades 7 – 12	29
Grades 5 – 12 Combined Classes	24

QUALITY OF EDUCATION PROGRAMS & SERVICES

Student to Teacher Ratios

Year	Provincial Staffing Formula		Actual	
	Total Students : Total Teachers	Students : Teachers	Total Students : Total Teachers	Students : Teachers
2023-2024	377 : 23.56	16.00 : 1	377 : 24.20	15.58 : 1



CORE CURRICULUM AND SUPPORTS

Harold Peterson Middle School	
Early French Immersion	Yes
Late French Immersion	No
Music and or Fine Arts Specialists	Yes (no music specialist)
EST - Resource	Yes
EST - Guidance	Yes
Academic Support Teacher	No
District Curriculum Lead Coach Team	Provides Support to Schools through Subject Coordinators
Behaviour Intervention Mentor	Yes
Science Lab	Yes
Computer Lab	Yes
Gymnasium	Yes



QUALITY OF EDUCATION PROGRAMS & SERVICES

- ❖ Grade 5 students from Geary Elementary come to HP for Grades 6 to 8 for the English Prime Program.
- ❖ Grade 5 students in the English Prime Program from Hubbard Avenue Elementary and Summerhill Street Elementary attend HP if they reside within the catchment area for Harold Peterson.
- ❖ Grade 5 students in the Early French Immersion program (entry in grade 1 or 3) from Hubbard Avenue Elementary School and Summerhill Street Elementary School come to HP for Grades 6 to 8 FI.

PROVINCIAL ASSESSMENT RESULTS

Provincial Assessment Results for Harold Peterson Middle School (6-8)								
Grade	Assessment	Target 2025	% at Appropriate and Above					
			Province 2022-23	District 2022-23	School 2022-23	School 2021-22	School 2020-21	
K-5	4	English Reading	90%					
		Scientific Literacy	90%					
	5	Mathematics	90%					
		FSL Reading Early FI	90%					
6-8	6	English Reading	90%	69.3%	69.9%	66.4%	70.7%	63.4%
		Scientific Literacy	90%	72.5%	70.8%	71.4%	71.8%	-
	7	Mathematics	90%	43.6%	42.7%	36.2%	-	-
		FSL Reading Early FI	90%	66.9%	72.0%	61.2%	-	-
		FSL Reading Late FI	90%					
		FSL Reading PIF	90%	26.9%	28.7%	29.5%	-	-
8	Scientific Literacy	90%	67.2%	64.9%	74.0%	-	-	
9-12	9	Reading (ELPA)	90%					
	10	FSL Reading Early FI	90%					
		FSL Reading Late FI	90%					
		FSL Reading PIF	90%					

SPECIAL EVENTS THAT ENCOURAGE COMMUNITY SCHOOL PARTNERSHIPS

- ❖ Parent School Support Committee
- ❖ No Stone Left Alone Annual Event
- ❖ Remembrance Day Ceremonies
- ❖ Drama Group
- ❖ Breakfast and Lunch Programs
- ❖ Oromocto Special Care Home
- ❖ Heritage Fair Events
- ❖ Terry Fox Walk/Run
- ❖ School Open House
- ❖ Pink Shirt Project
- ❖ We Scare Hunger Food Drive



SPECIAL EVENTS THAT ENCOURAGE COMMUNITY SCHOOL PARTNERSHIPS CONTINUED...



- SPCA volunteer group
- Entrepreneurship Program
- Support for Homeless Shelters
- Student visits to Enhanced Living Seniors Centre
- Fundraisers for Oromocto and Area SPCA
- Orange Shirt Day Assemblies and Learnings
- Grade 8 Advancement Assembly
- School Sponsored Families for Christmas
- ME to WE Events
- Sporting Events

STUDENT VOICE



- ❖ REP Group – Representing Every Panther
- ❖ Student Leadership Initiatives
- ❖ Class Initiatives and Challenges
- ❖ Drama Club
- ❖ Entrepreneur Program
- ❖ Student Wellness Survey
- ❖ Student Pulse Survey
- ❖ Teacher and School student surveys
- ❖ Guest Speakers – Matthew Martin from Black Lives Matter
- ❖ Panther Paws Activity Periods

STUDENT VOICE



- ❖ Dress Code
- ❖ Student Forums
- ❖ Panther Pride Assemblies
- ❖ School Clubs
- ❖ Shout Outs on announcements
- ❖ Open Door to Admin
- ❖ GSA
- ❖ Announcements
- ❖ Class Meetings and Discussions
- ❖ SEL Classes

SCHOOL BENEFITS

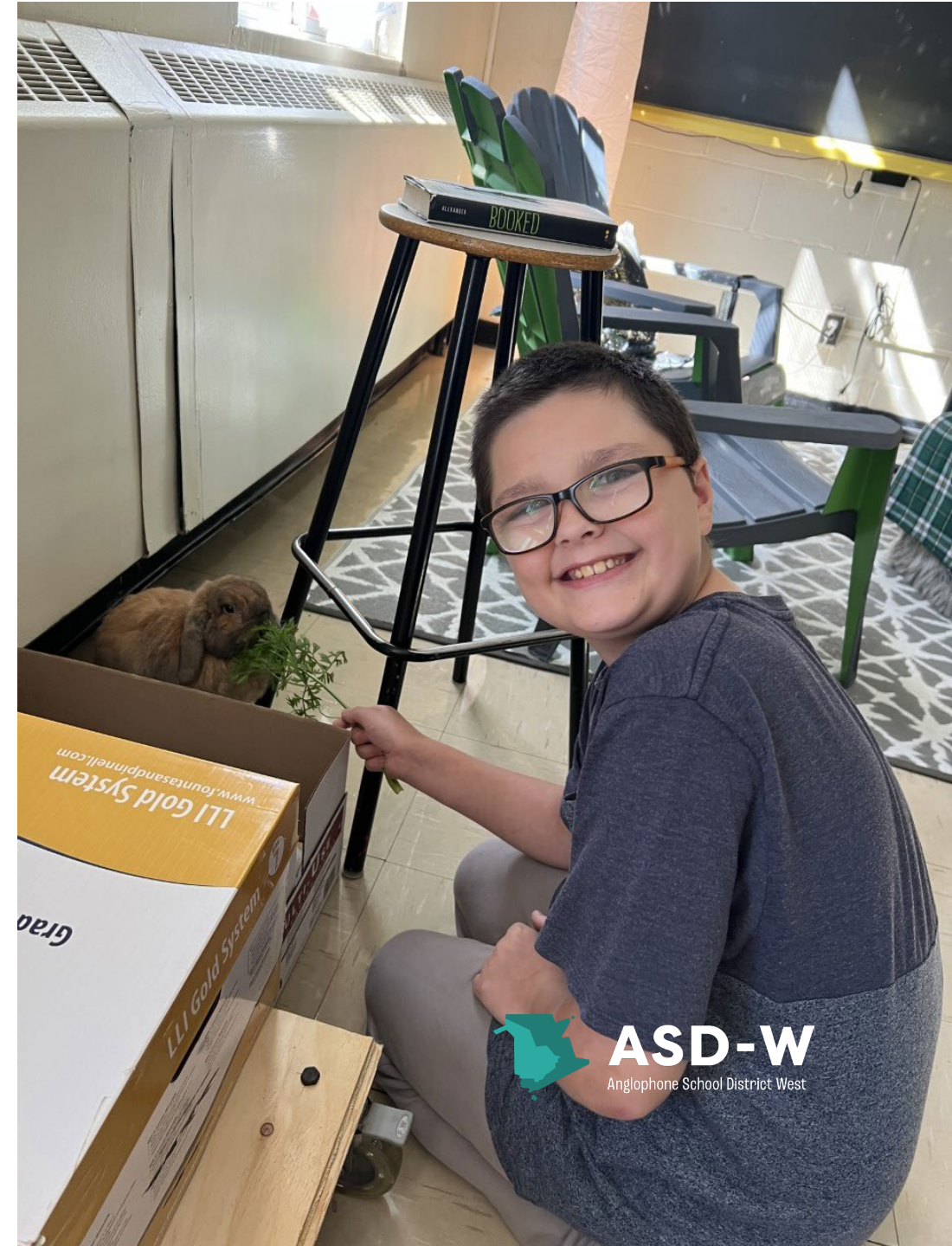
- ❖ Chartwell's Cafeteria
- ❖ Culinary Class for Grade 8
- ❖ MakerSpace area and classes for grades 6&7
- ❖ Woodshop for all grades
- ❖ Science Lab
- ❖ Art Room
- ❖ Barkley the Bunny in Resource room
- ❖ Club Hub to highlight clubs at school
- ❖ Library and Library Assistant
- ❖ Centrally located – walking distance to wetlands, track, soccer fields, ball fields, skating rinks, public library, base facilities and other Oromocto schools for partnering.





SCHOOL BENEFITS CONTINUED....

- ❖ Two computer labs and two computer carts for student use.
- ❖ Phys Ed Wellness Room
- ❖ HP is so fortunate to have a large green space around the school so students have a very large play area.
- ❖ Gaga Pit and Basketball Court outside
- ❖ Great Staff and Students!!





SCHOOL CHALLENGES



- ❖ No dedicated space for Music class
- ❖ Broken lockers
- ❖ Lack of meeting spaces
- ❖ Lack of office spaces
- ❖ Accessibility challenges – elevator only in one wing
- ❖ Lack of staff washrooms/poor locations
- ❖ Unreliable heating system
- ❖ No ventilation system – currently in beginning stages of installation
- ❖ Lack of parking space for staff and visitors
- ❖ Student drop off area is small



SCHOOL CHALLENGES



- ❖ Small gymnasium
- ❖ Lack of spectator space in gymnasium
- ❖ Lack of changeroom facilities for students
- ❖ Unwelcoming main office space
- ❖ No true Gender-Neutral washroom facility with privacy
- ❖ Lack of storage space
- ❖ Poor infrastructure to support the increasing need for reliable technology (unable to have BYOD)
- ❖ Lack of staff work areas/poor set up for copiers/printers
- ❖ Outdated Science Lab



SCHOOL CHALLENGES

- ❖ Cafeteria space accommodates only one grade level at a time for seating
- ❖ Intercom communication system is very old and unreliable
- ❖ Lack of volunteers at middle level
- ❖ School bell and clock system outdated

BUILDING CHALLENGES- HEALTH & SAFETY

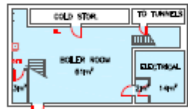
- ❖ There is no mechanical ventilation system.
HEPA (high efficiency particulate air) units in place since January 2022.
- ❖ The school does not have a proper cafeteria.



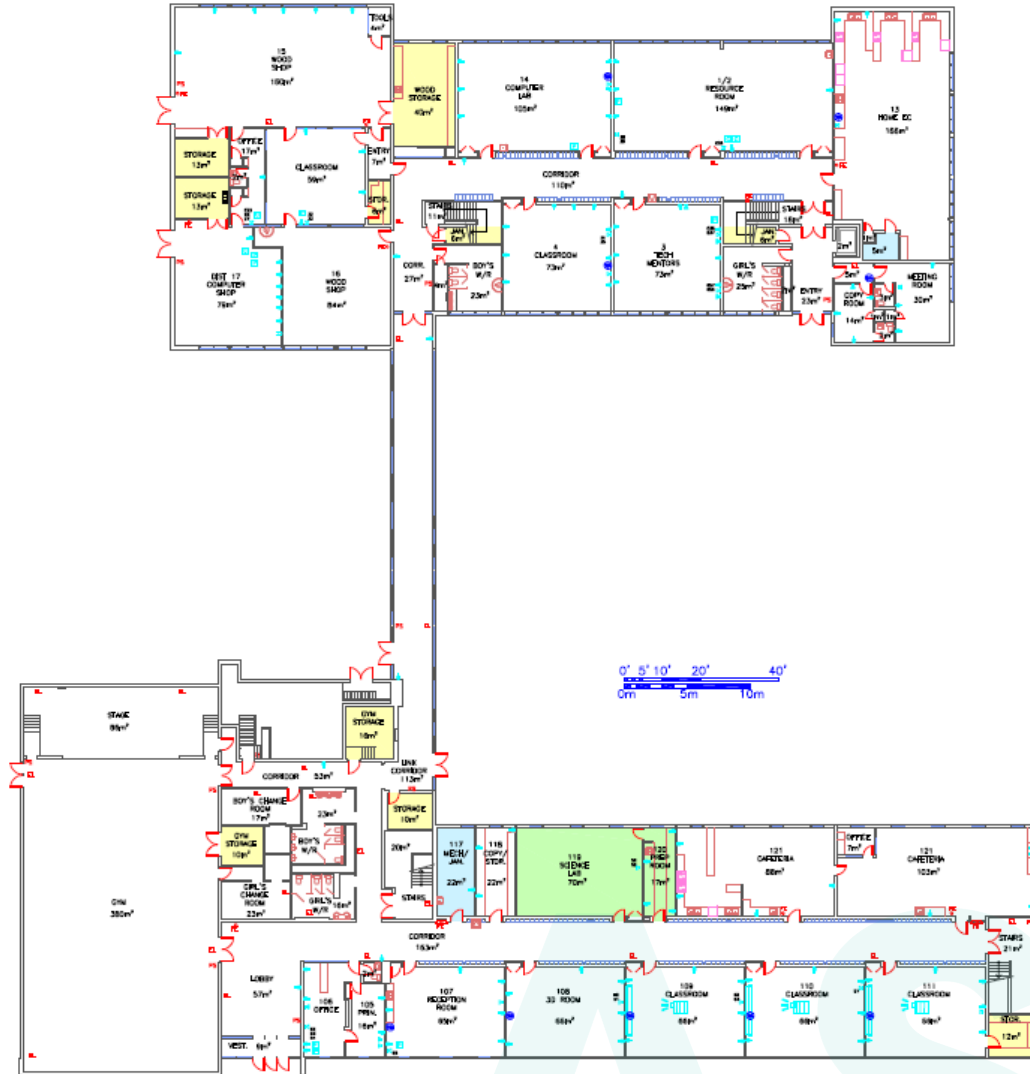
BUILDING SUMMARY

- ❖ Initially constructed in 1958. Addition: 1966
- ❖ Owned by the Province of New Brunswick since 1967.
- ❖ Cleaning services (janitorial) provided by Contract Cleaning Company
- ❖ Heating system is hot water boiler with natural gas.
- ❖ The school is a brick/concrete structure.
- ❖ It is a two-storey building and the school space is 5508 square meters.
- ❖ There is a sprinkler system (automatic fire suppression system) and fire prevention alarm system in the facility.
- ❖ Land ownership around the school is commercial and residential.
- ❖ There are no environmental concerns.
- ❖ The school has a gymnasium.
- ❖ There is an elevator in service.
- ❖ Playground is with various apparatus with a field.
- ❖ Boiler repairs and replacement in 2003, 2004.
- ❖ Electrical system upgrades in 2003, 2004.
- ❖ Fire integrity projects in 2005, 2015.
- ❖ Elevator repairs and replacement in 2005, 2006.
- ❖ Roof replacements in 2005, 2006, 2015, 2020.
- ❖ Lighting upgrades in 2006.
- ❖ Site improvements in 2008.
- ❖ Washroom upgrades in 2006, 2007, 2011.
- ❖ Exterior improvements in 2012, 2013.

BUILDING SUMMARY

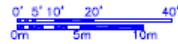


BOILER ROOM

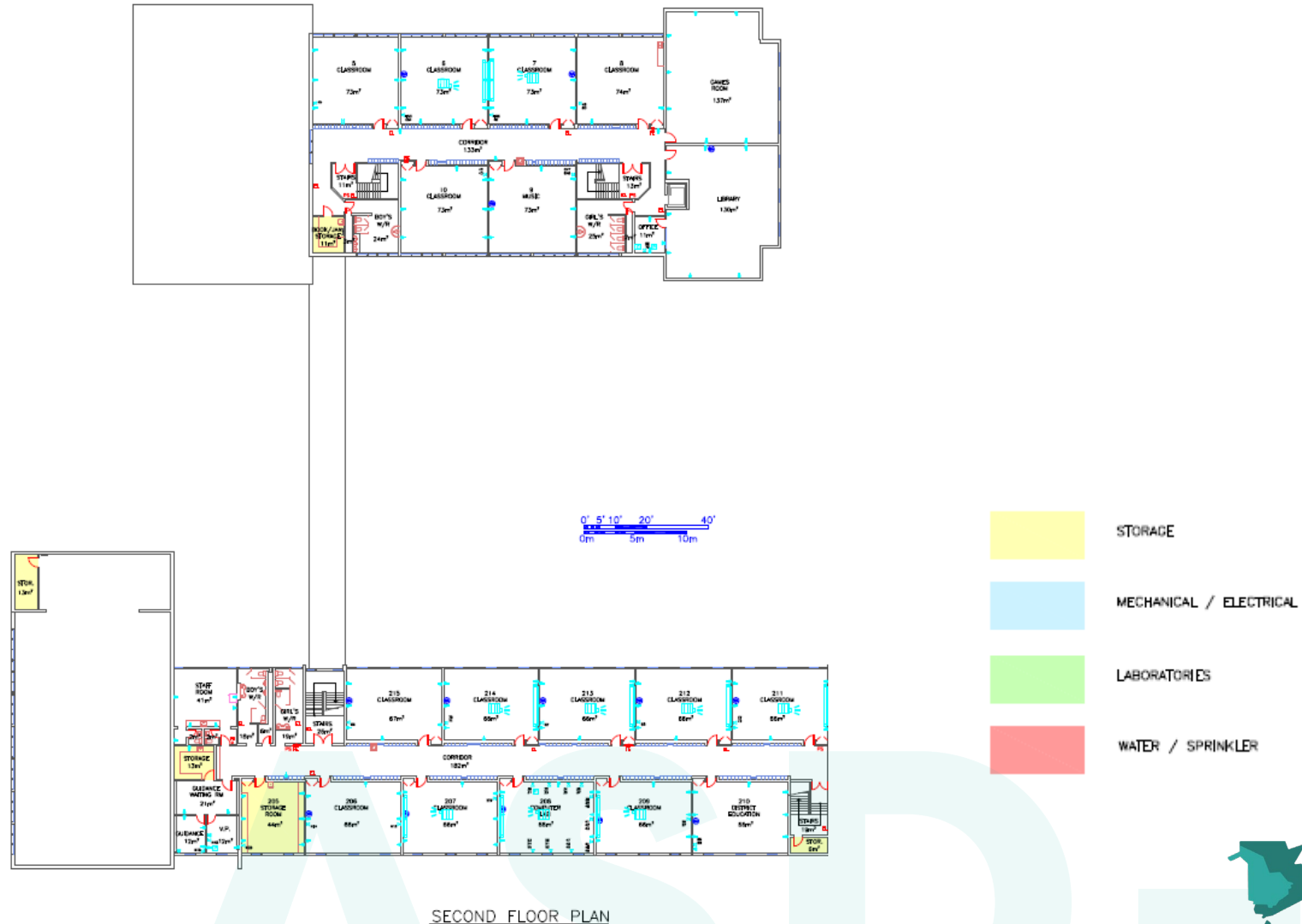


FIRST FLOOR PLAN

- STORAGE
- MECHANICAL / ELECTRICAL
- LABORATORIES
- WATER / SPRINKLER



BUILDING SUMMARY



FUNCTIONAL CAPACITY DATA

Room Details

Number of Classrooms: 26

Number of Modulars: 0

Number of classrooms (excluding modulars) and number of modulars on-site.

Capacity Information



50%

The functional capacities of the school both excluding, and including spaces provided by modular buildings (where applicable), divided by the total enrolment at the school as of September 30th, 2022. The graph displays the utilization rate inclusive of modular capacities. Data Verified: Jan. 30th, 2023

Surplus Student Spaces



376

The extent to which the school's 2022-23 enrolment compares to its functional capacity of available student spaces (excluding modulars). A negative value indicates a shortfall of permanent student spaces compared to total enrolment. A positive value indicates a surplus of student spaces available compared to the total enrolment. Data verified: Feb. 2023

CAPITAL INVESTMENTS

School Year	Project	Capital Improvements
2003-2004	Boiler	\$ 12,434
2003-2004	Electric Service Entrance	\$ 585
2004-2005	Boiler	\$ 185,386
2004-2005	Electric Service Entrance	\$ 19,119
2004-2005	Structural Investigation	\$ 1,177
2005-2006	Electric Service Entrance	\$ 36,715
2005-2006	Fire Integrity	\$ 70,353
2005-2006	Lift	\$ 12,694
2005-2006	Roof Replacement	\$ 5,841
2006-2007	Elevator	\$ 200,175
2006-2007	Gym Floor	\$ 8,266
2006-2007	Lighting	\$ 6,961
2006-2007	Roof Replacement	\$ 61,946
2006-2007	Washroom Upgrade	\$ 9,965
2007-2008	Washroom Upgrade	\$ 150,548
2008-2009	Site Improvement	\$ 58,920
2008-2009	Washroom Upgrade	\$ 8,710
2010-2011	Washroom Upgrade	\$ 6,020
2011-2012	Site Improvement	\$ 107,519
2011-2012	Washroom Upgrade	\$ 83,669
2012-2013	Exterior Window	\$ 52,777
2013-2014	Exterior Window	\$ 181,154
2014-2015	Ventilation System	\$ 7,306
2015-2016	Fire Integrity	\$ 54,262
2015-2016	Roof Replacement	\$ 38,288
2020-2021	Roof Replacement	\$ 157,383
Total		\$ 1,538,173

PHYSICAL PLANT STATUS

School Physical Plant Review / Report by School				
School: Harold Peterson Middle School (ASD-W)		Grades: 6-8		Year Built: 1958
ASD-W	School No: 2511	City/Village: Oromocto	Enrolment: 389	Total Area (m2): 5508
Mechanical and Electrical Systems		Description	Priority	Est. Cost
Heating and Ventilation	Ventilation System	Ventilation system. 5508 sqm. Note: Estimated costs updated Sept'13.	2	\$1,355,000.00
Sub Total (Category)				\$1,355,000.00
Building Exterior and Site		Description	Priority	Est. Cost
Building Envelope	Exterior Walls	Masonry repairs at various window locations.	3	\$15,000.00
Building Envelope	Exterior Walls	Repointing brick	2	\$100,000.00
Building Envelope	Other	The roof canopy over the doors in old wing (east end of school) are in really bad condition and it needs to be replaced.	1	\$200,000.00
Sub Total (Category)				\$315,000.00
Building Interior and Additions		Description	Priority	Est. Cost
Interior Accessibility	Lift	Install Elevator #2 of 2 including bldg access. NOTE: Estimated costs updated in Aug'11.	2	\$225,000.00
Interior Alterations and Renovations	Washrooms	Renovate 2 girls washrooms new wing -PH3 49 sqm. NOTE: Estimated costs updated in Aug'11.	2	\$106,000.00
Interior Finishes	Other	Replace lockers in old wing of school.	1	\$43,000.00
Interior Finishes	Interior Doors	Install new door hardware on all classroom doors. If done by district staff cost would be approximately \$13000.00	1	\$25,000.00
Interior Finishes	Other	Refinish and reline gym floor.	2	\$17,500.00
Sub Total (Category)				\$416,500.00
SCHOOL TOTAL				\$2,086,500.00

FACILITIES OPERATIONAL COSTS

FISCAL YEAR 2022/2023	FACILITIES COST
Electricity	\$ 29,657.78
Water/Sewage	\$ 13,253.03
Garbage Removal	\$ 3,133.29
Snow Plowing	\$ 6,000.00
Natural Gas	\$ 71,059.01
Cleaning Supplies/Services	\$ 2,559.75
Minor Repairs/Renovations	\$ 50,846.11
TOTAL	176,508.97

FACILITIES OPERATIONAL COSTS

Per Sq. M. Utility Costs

Average: \$30



\$22

Total fiscal year operating costs for each school site divided by the size of the building footprint. Includes power, sewage, garbage, heating, maintenance... etc. Value is dollars per square metre. Source: Facilities Data (calculated) Feb. 2023

Per Pupil Operating Costs

District Avg.: \$599



\$316

Total 2021-22 fiscal year operating costs divided by the total enrolment of the school as of Sept. 30th 2022. Source: Facilities Data (calculated) Feb. 2023

ASSIGNED BUDGETS

Total Budget

Previous Year: \$42,330
Change from Prev. YR:
+\$787



\$43,117

Total 2022-23 school budget allocation, as well as previous school year (excludes staffing, facility and energy op. costs). Source: Budget and Accounting Office April 2023

Budget per Student

Average: \$122



\$111

Total instructional and programming budget for 2022-23 school year, divided by the total student enrolment of the previous year. Budget excludes staffing, facility and energy op. costs. Source: Budget and Accounting Office April 2023

Instructional Budget

\$32,272

School budget related to instructional cost categories for the 2022-23 school year (e.g. Technology, textbooks, library, printing, misc. equipment, travel costs... etc.) Excludes staffing costs. Source: Budget and Accounting Office April 2023

PSSC Budget

\$1,205

Budget for the Parent School Support Committee (PSSC) at this school during the 2022-23 school year. Source: Budget and Accounting Office April 2023



TOTAL ESTIMATED SALARY COSTS

Staff Summary

Total FTE: 34.6

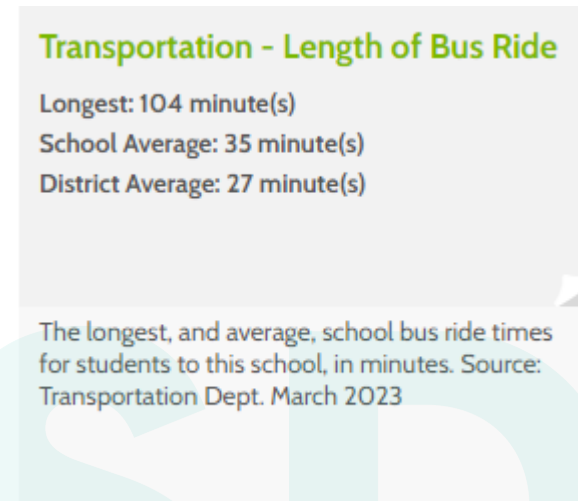
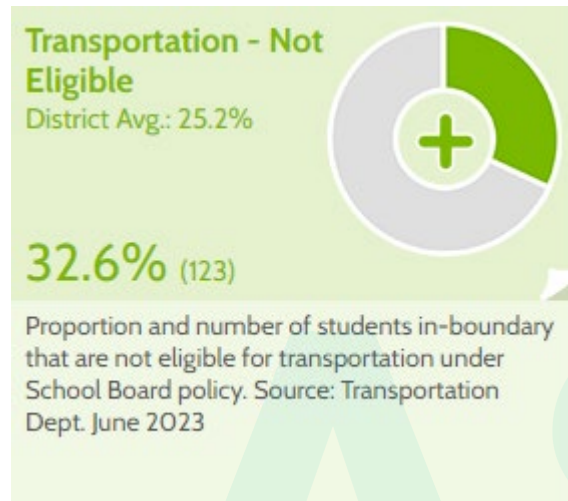
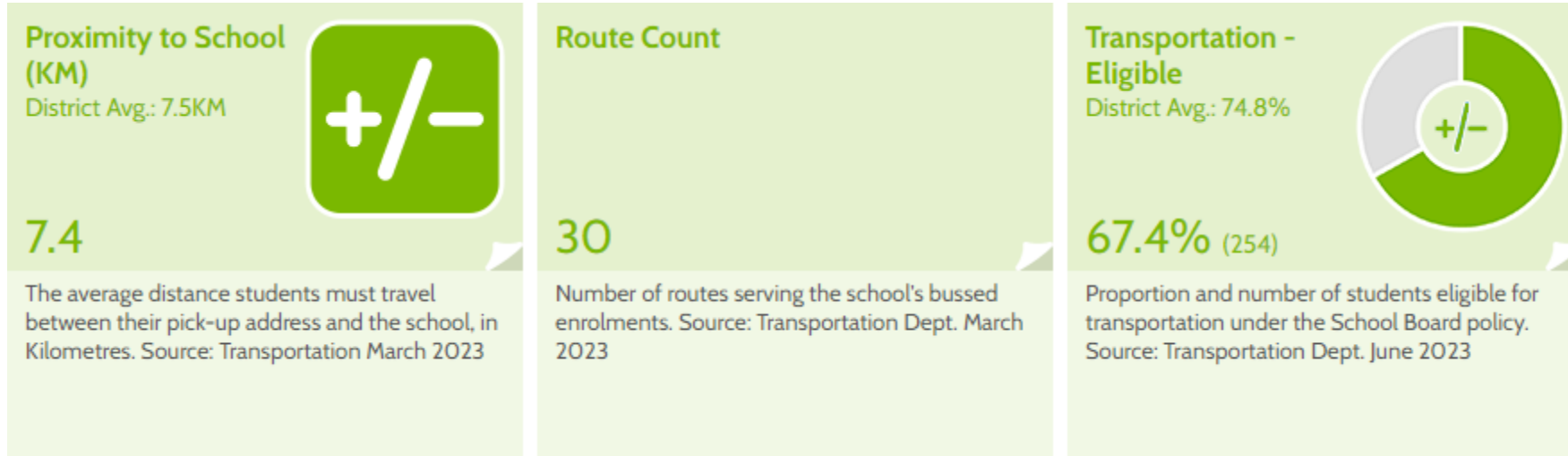
Education Staff FTE: 23.8

Support Staff FTE: 10.8

Total Estimated Salary Cost: \$2,395,667

FTE (Full Time Equivalent) and estimated salary cost of total staff at this school. Displaying breakdown of FTE into education (teachers) and support staff categories (support includes administrative, classroom support, custodian... etc.). Data as of April 2023.

TRANSPORTATION STUDY





IMPACT ON THE LOCAL COMMUNITY AND ECONOMIC DEVELOPMENT

- ❖ Turning over an aged infrastructure to GNB for future considerations (for example, continued government use, sale of the building for development, demolition and future use of land)
- ❖ Potential addition of a brand-new facility within the Town of Oromocto resulting in improved community space outside instructional hours
- ❖ Attraction of families to the community when considering moving/postings and wanting children to attend a new, modern school



POSSIBLE CONSIDERATIONS INCLUDING IMPACT ON OTHER SCHOOLS:

FROM THE 2018 ERNST & YOUNG REPORT, THE FOLLOWING 5 SCENARIOS WERE PRESENTED:

- ❖ Close all schools within scope and replace them with a new 6-8 middle school and two K-5 elementary schools.
- ❖ Close all schools within scope and replace them with two new K-8 schools.
- ❖ Close all schools within scope and replace them with three new K-8 schools.
- ❖ Review the existing two middle schools compared to the EECD Planning Guidelines for Educational Facilities to determine what/if any space is deficient to the guidelines for a possible school addition and/or amalgamation in a mid-life upgrade scenario in conjunction with two new elementary schools.
- ❖ Close all schools within scope and replace them with a new K-2 Elementary, a new 3-5 school, and a new 6-8 school.

OUR VISION FOR NEW SCHOOLS

- ❖ 2 Gymnasiums of 591 m² with change rooms and ancillary spaces
- ❖ 32 General instruction classrooms
- ❖ Guidance/visiting professionals' offices
- ❖ 4 Kindergarten classrooms
- ❖ Student government room
- ❖ 1 Early Childhood development room
- ❖ Library/media centre
- ❖ 2 Multi-function classrooms
- ❖ Cafeteria/kitchen/stage
- ❖ MSTE spaces
- ❖ Recycling room
- ❖ Science room
- ❖ Administration space
- ❖ Resource/special care classrooms
- ❖ Personnel centre with staff lounge
- ❖ Student/project work areas
- ❖ Play areas and playfield
- ❖ Music rooms
- ❖ Art room
- ❖ Performing arts/theatre classroom

*Recent K-8 School Construction – capacity of 650 students



QUESTIONS AND ANSWERS



ASD-W
Anglophone School District West



NEXT STEPS

- Public Meeting # 2 - to be held as series of subgroup meetings as follows:
 - Saturday Morning, March 16, 2024- Assiniboine Avenue Elementary School, Burton Elementary School, **Hubbard Elementary School (Venue)**.
 - Saturday Afternoon, March 16, 2024- Gesner Street Elementary School, **Summerhill Elementary School (Venue)**.
 - Saturday Morning, March 23, 2024- Morning session for presentations on Harold Peterson Middle School and **Ridgeview Middle School (Venue)**.
- Public Meeting # 3 – Evening of Thursday, May 9, 2024. A special District Education Council Meeting open to the public, where members will hold final conversations on the study, present a motion, and vote on the recommended conclusion.
- Government considers the recommendation and makes a decision
- For full detail and documentation of this study and its processes, please visit www.asdw.nbed.ca



THANK YOU

David McTimoney – Superintendent

Special Thanks to Paul MacIntosh, Shawn Tracey, Susan Young, School Principals, and their teams for the creation of this presentation.