

• • •
SUSTAINABILITY STUDY -

GESNER STREET ELEMENTARY SCHOOL



→ SATURDAY, JANUARY 27, 2024



PUBLIC MEETING #1 AGENDA

- Introductions
- Review of Provincial Policy 409 Multi-Year School Infrastructure Planning
- Presentation of Information – Gesner Street Elementary School
- Question and Answer Period
- What's Next?
 - Online Resources
 - Next Meetings





INTRODUCTION

- ASD-W and EECD had initiated a review of schools in the Oromocto Education Centre area to examine potential scenarios for long-term infrastructure planning. The review found five potential scenarios for updating school infrastructure in the area, based on population growth and student enrolment numbers. These infrastructure plans have now reached a point where they have been recorded on the Stable Departmental Infrastructure Priorities (SDIP) list, under the name Oromocto K-8 Rationalization. In order to take next steps in the process, ASD-W is required to conduct a sustainability study as outlined in provincial Policy 409-Multiyear School Infrastructure Planning.



PROVINCIAL POLICY 409

MULTI-YEAR SCHOOL INFRASTRUCTURE PLANNING

- Outlines a number of responsibilities to do with facilities in our system
- Sections 6.4, 6.5, 6.6, and 6.7 are relevant for sustainability studies
- Three public meetings are required as outlined:
 - Meeting 1 – Presentation of information from District regarding school
 - Meeting 2 – Presentation from stakeholders regarding their thoughts on the sustainability of the school and relevant factors
 - Meeting 3 – Final review of information by District Education Council (DEC) and subsequent motion on next steps.



PROVINCIAL POLICY 409

MULTI-YEAR SCHOOL INFRASTRUCTURE PLANNING

- There are several potential outcomes as described in section 6.4.3 of the policy, including:
 - Maintaining the status quo
 - Repairing the school
 - Grouping schools together
 - Closing the school
 - Placing some students elsewhere



INFORMATION TO BE PRESENTED

- Enrolment
- Quality of Education Programs & Services
- Transportation
- Finances
- Impact on Other Schools
- Building Challenges/ Health & Safety
- Impact on Local Community
- Economic Development
- Ernst & Young Report

ENROLMENT

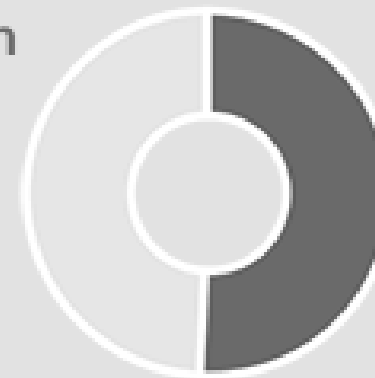
Total Enrolment 2022-23



256

Number of pupils attending the school. The graph represents up to 6 years of total enrolment history at the school.

Projected Utilization in 5 years (Projected Enrolment)



51% (202)

Proportion of the school's capacity projected to be in use 5 years from now.

ENROLMENT BY GRADE LEVEL

October 1st, 2023

| | English Prime | Early French Immersion (Gr. 1 Entry) | Total |
|---|---------------|--------------------------------------|------------|
| K | 75 | | 75 |
| 1 | 40 | 37 | 77 |
| 2 | 56 | 30 | 86 |
| | | | 238 |

MAXIMUM CLASS SIZES

| Grade Level | Maximum Student Count |
|--------------------------------|-----------------------|
| Kindergarten – Grade 2 | 21 |
| Grade 3 | 26 |
| K – 3 Combined Classes | 16 |
| Grade 4 – 6 | 28 |
| Grades 3 – 5 Combined Classes | 23 |
| Grades 7 – 12 | 29 |
| Grades 5 – 12 Combined Classes | 24 |

QUALITY OF EDUCATION PROGRAMS & SERVICES

Student to Teacher Ratios

| Year | Provincial Staffing Formula | | Actual | |
|-----------|---------------------------------|---------------------|---------------------------------|---------------------|
| | Total Students : Total Teachers | Students : Teachers | Total Students : Total Teachers | Students : Teachers |
| 2023-2024 | 238 : 18.15 | 13.11 : 1 | 238 : 20.10 | 11.84 : 1 |



CORE CURRICULUM AND SUPPORTS

| Gesner Elementary School | |
|-------------------------------------|--|
| Early French Immersion | Yes |
| Late French Immersion | N/A |
| Music and or Fine Arts Specialists | Yes |
| EST - Resource | Yes (X2) |
| EST - Guidance | Yes |
| Academic Support Teacher | Yes |
| Behaviour Intervention Mentor | Yes |
| District Curriculum Lead Coach Team | Provides Support to Schools through Subject Coordinators |
| Science Lab | No |
| Computer Lab | No |
| Gymnasium | Yes |



QUALITY OF EDUCATION PROGRAMS & SERVICES

- ❖ Students from Gesner Street Elementary School enter the English Prime program in Kindergarten.
- ❖ At the end of Kindergarten, students in the English Prime program can choose to either enter the Grade 1 French Immersion program or remain in the English Prime program.
- ❖ We have a full time Physical Education teacher, so children in all grade levels have three Phys-Ed classes each week.
- ❖ Gesner also has a Music Specialist who the children see for one music class a week. Our Music teacher also leads the school's holiday concert, choir and drama club.
- ❖ Social Emotional Learning has been a school focus for the last several years and is one of our goals on our school plan.
 - Zones of Regulation
 - WITS
 - 3G Strong
 - Be Safe Program
- ❖ Under the guidance of our 2 full time Resource teachers, Guidance teacher, Academic Support Teacher and Behavioural Intervention Mentor we provide wrap around services for our students.

SPECIAL EVENTS THAT ENCOURAGE COMMUNITY SCHOOL PARTNERSHIPS

- ❖ Fall Frolic Craft Fair
- ❖ Breakfast and Lunch Programs
- ❖ Gesner Volunteers
- ❖ Remembrance Day Ceremonies
- ❖ Scholastic Book Fairs – Twice Per Year
- ❖ Drama Festival and Music Festival
- ❖ Presentations; Art Richard, Earth Rangers, Razzmataz, Rolland Bibeau, Fredericton Solid Waste Commission, UNB Reds
- ❖ Swing into Spring
- ❖ Holiday Concerts
- ❖ Parent School Support Committee
- ❖ Gesner Food Drives
- ❖ Field Trips; Fire Station, Science East, Playhouse theatre, Public Library
- ❖ Swing into Spring and Bike Rodeo with the RCMP
- ❖ Jump Rope for Heart



SPECIAL EVENTS THAT ENCOURAGE COMMUNITY SCHOOL PARTNERSHIPS CONTINUED...

- ❖ Volunteer Celebration
- ❖ Walk and Roll for Diversity
- ❖ Terry Fox Walk
- ❖ Wolastoqey Wednesdays
- ❖ The Grinch Presentation
- ❖ Parent School Support Committee
- ❖ Gesner Food Drive
- ❖ Ring a Bell Campaign
- ❖ Diversity and Respect Week



- ❖ Cultural Awareness
- ❖ Truth and Reconciliation Week
- ❖ Activities from OHS students– Drumming and Dancing, reading buddies, play day in June
- ❖ Gecko Assemblies and awards
- ❖ Morning announcements on Teams
- ❖ Community Support – Oromocto Fire Department-Volunteers, Rusagonis Baptist Church, Commando Veteran Motorcycle Club, RCMP Oromocto Detachment, Jim Gilbert, McDonalds, Oromocto Dental Center, Exit Realty, and many local business

SPECIAL EVENTS THAT ENCOURAGE COMMUNITY SCHOOL PARTNERSHIPS CONTINUED...

- ❖ Career Day
- ❖ Passion Projects
- ❖ Student Mascot
- ❖ Monthly GECKO focus
- ❖ Collaboration with Local Artists – School Murals and Comfort Room
- ❖ Skating at Kings Arrow



STUDENT VOICE



Gesner Street Elementary School

- ❖ Kindness Rock Project
- ❖ Student Daily Jokes
- ❖ Playground Pals
- ❖ Personal Celebrations – birthdays, new siblings
- ❖ Pink Shirt Day
- ❖ Multiple Spirit Weeks
- ❖ Lunch Buddies
- ❖ Student Wellness surveys
- ❖ Playground behaviour videos
- ❖ Authentic persuasive writing opportunities

SCHOOL BENEFITS

- ❖ As a smaller school we are able to build CONNECTIONS with our students
- ❖ There is a Core Leadership team with a focus on School Improvement Goals, a PBIS Team with focuses on Positive Working and Learning Environment and Social Emotional Learning
- ❖ Strong grade level teams as we have 5 Kindergarten, 5 Grade One and 5 Grade 2 classes
- ❖ A dedicated PSSC Committee
- ❖ Community connections are highly visible
- ❖ Close proximity to community programs





SCHOOL BENEFITS CONTINUED....

- ❖ Strong core group of volunteers that organize and facilitate fundraising and the hot lunch program
- ❖ Literacy and Numeracy Leads support our professional learning
- ❖ Guidance Lead has presented multiple Social and Emotional Learning presentations to staff
- ❖ ELF Literacy Reading program support students
- ❖ Small, connected and supportive staff – we are a family



SCHOOL CHALLENGES



- ❖ Parent Parking lot too small
- ❖ Drop off for students uses the bus lanes
- ❖ Limited areas for visiting specialists to work
- ❖ Missing older role models from upper elementary
- ❖ No breakout areas in the classrooms
- ❖ Limited washrooms for staff and students
- ❖ Missing sinks in classroom
- ❖ Aging infrastructure

BUILDING CHALLENGES- HEALTH & SAFETY

- ❖ There is no sprinkler system (automatic fire suppression system), fire prevention alarm system in the facility.
- ❖ There is no mechanical ventilation system. HEPA (high efficiency particulate air) units in place since January 2022.
- ❖ The school does not have a cafeteria.



BUILDING SUMMARY

- ❖ Initially constructed in 1959.
- ❖ Owned by the Province of New Brunswick since 1967.
- ❖ Cleaning services (janitorial) provided by Contract Cleaning Company
- ❖ Heating system is hot water boiler with natural gas.
- ❖ The school is a brick/concrete structure.
- ❖ It is a two-storey building, and the school space is 3068 square meters.
- ❖ Land ownership around the school is commercial and residential.
- ❖ There are no environmental concerns.
- ❖ The school has a gymnasium.
- ❖ There is a lift in service.
- ❖ Playground is with various apparatus with a field.
- ❖ Washroom upgrades in 2000, 2001, 2002, 2006, 2008.
- ❖ Electrical system upgrades in 2002, 2003.
- ❖ Fire integrity project in 2002.
- ❖ Heating system upgrades in 2002, 2021.
- ❖ Roof replacement in 2003, 2018, 2019.
- ❖ Lift repairs and replacement in 2003, 2004.
- ❖ Exterior improvement in 2006.
- ❖ Interior improvement in 2006.

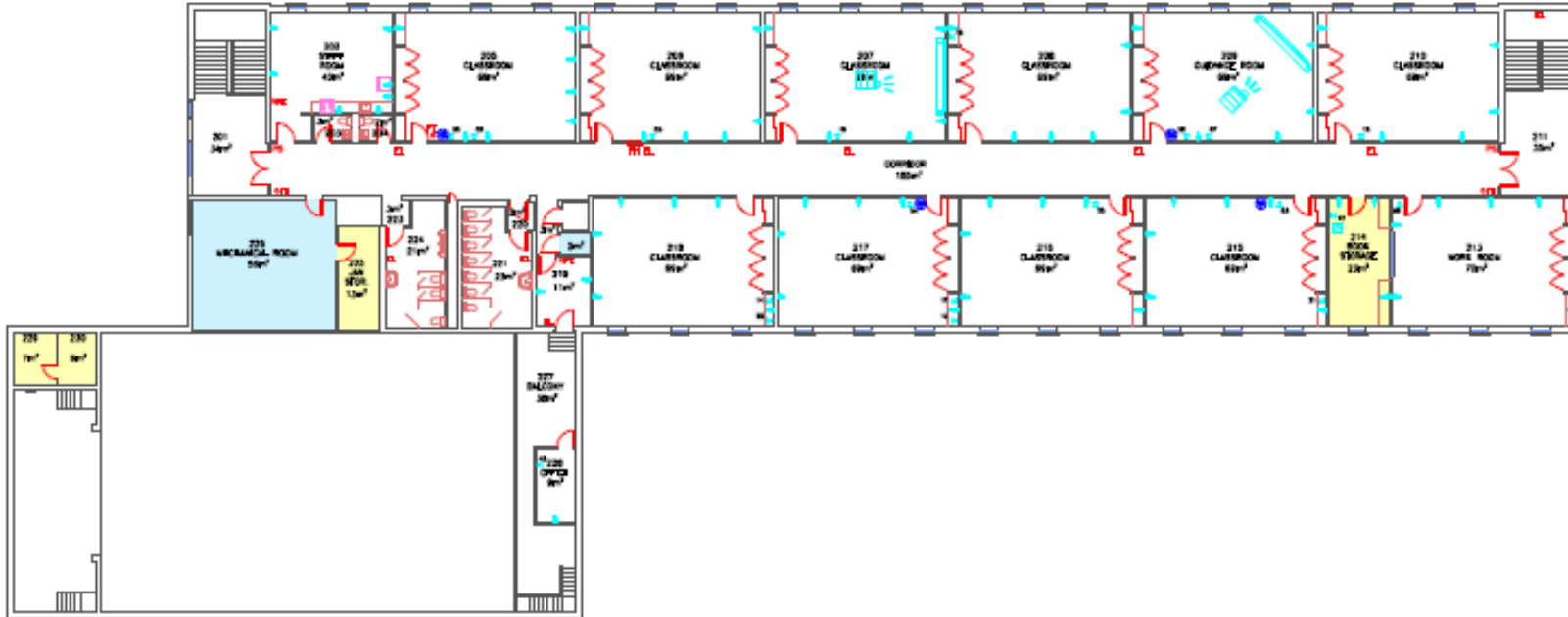
BUILDING SUMMARY



FIRST FLOOR PLAN



BUILDING SUMMARY



SECOND FLOOR PLAN




FUNCTIONAL CAPACITY DATA

Room Details

Number of Classrooms: 19
Number of Modulars: 0

Number of classrooms (excluding modulars) and number of modulars on-site.


Capacity Information



64%

The functional capacities of the school both excluding, and including spaces provided by modular buildings (where applicable), divided by the total enrolment at the school as of September 30th, 2022. The graph displays the utilization rate inclusive of modular capacities. Data Verified: Jan. 30th, 2023

Surplus Student Spaces



147

The extent to which the school's 2022-23 enrolment compares to its functional capacity of available student spaces (excluding modulars). A negative value indicates a shortfall of permanent student spaces compared to total enrolment. A enrolment. Data verified: Feb. 2023

CAPITAL INVESTMENTS

| School Year | Project | Capital Improvements |
|--------------|------------------------------------|----------------------|
| 2000-2001 | Washroom Upgrade | \$ 8,065 |
| 2001-2002 | Washroom Upgrade | \$ 63,859 |
| 2002-2003 | Electrical Supply and Distribution | \$ 801 |
| 2002-2003 | Fire Integrity | \$ 21,507 |
| 2002-2003 | Heating System | \$ 166,942 |
| 2002-2003 | Washroom Upgrade | \$ 46 |
| 2003-2004 | Electrical Supply and Distribution | \$ 61,546 |
| 2003-2004 | Lift | \$ 6,315 |
| 2003-2004 | Roof Replacement | \$ 5,125 |
| 2004-2005 | Lift | \$ 70,467 |
| 2004-2005 | Roof Replacement | \$ 71,529 |
| 2006-2007 | Ceilings | \$ 8,138 |
| 2006-2007 | Flooring | \$ 8,261 |
| 2006-2007 | Masonry - Brick Repointing | \$ 20,969 |
| 2006-2007 | Washroom Upgrade | \$ 2,059 |
| 2007-2008 | Washroom Upgrade | \$ 7,281 |
| 2008-2009 | Washroom Upgrade | \$ 84,244 |
| 2019-2020 | Roof Replacement | \$ 32,936 |
| 2021-2022 | Heating System | \$ 60,000 |
| Total | | \$700,090 |

School Physical Plant Review / Report by School

School: Gesner Street Elementary School (ASD-W) Grades: Kindergarten, 1-2 Year Built: 1959
 ASD-W School No: 2508 City/Village: Oromocto Enrolment:259 Total Area (m2): 3068

| Mechanical and Electrical Systems | | Description | Priority | Est. Cost |
|-----------------------------------|--------------------|--|----------|---------------------|
| Heating and Ventilation | Ventilation System | New ventilation system. 3068 sqm. Note: Estimated costs updated Sept'13. | 2 | \$755,000.00 |
| Electrical | Interior Lighting | Install new Lighting & ceiling in 12 classrms @ 70 sqm = 840 sqm. NOTE: Estimated costs updated in Aug'11. | 3 | \$86,000.00 |
| Sub Total (Category) | | | | \$841,000.00 |

| Building Exterior and Site | | Description | Priority | Est. Cost |
|----------------------------|------------------|--|----------|---------------------|
| Building Envelope | Exterior Walls | Masonry repairs. Repointing of 154 sqm. Note: Estimated costs as of May'15. | 2 | \$47,000.00 |
| Site | Site Improvement | Driveway/Parking...Item #1-- Staff Parking Lot PHASE II & Item #2--Repave Section next to Parent Parking Area. Item #1-140 m of curbing & 1254 sqm paving. Item #2-1,161 sqm. NOTE: Estimated costs updated in Sept 2016. | 2 | \$114,100.00 |
| Site | Other | Need to expand the parent drop off parking lot. We will bring in a consultant to design a parking lot extension that will work for parking and traffic flow. This is due to the COVID pandemic and the extra vehicle traffic as more parents are dropping their kids off instead of them taking the bus. | 1 | \$0.00 |
| Sub Total (Category) | | | | \$161,100.00 |

| Building Interior and Additions | | Description | Priority | Est. Cost |
|---------------------------------|--------|--|----------|--------------------|
| Interior Finishes | Floors | Replace gym floor. 341 sqm. NOTE: Estimated costs updated in Aug'11. | 3 | \$69,000.00 |
| Interior Finishes | Other | Refinish and reline gym floor | 3 | \$15,500.00 |
| Sub Total (Category) | | | | \$84,500.00 |

| Fire Codes | | Description | Priority | Est. Cost |
|----------------------|------------------|---|----------|---------------------|
| Fire Prevention | Sprinkler System | To install a sprinkler system in this school. Estimated pricing at this time, this does not include a fire pump. This will be in consideration of a ventilation upgrade. A flow test will need to be completed to confirm the requirement of a fire pump in the school. | 1 | \$300,000.00 |
| Sub Total (Category) | | | | \$300,000.00 |

SCHOOL TOTAL **\$1,386,600.00**

PHYSICAL PLANT STATUS

FACILITIES OPERATIONAL COSTS

| FISCAL YEAR 2022/2023 | FACILITIES COST |
|----------------------------|--------------------|
| Electricity | \$ 16,098.65 |
| Water/Sewage | \$ 3,483.80 |
| Garbage Removal | \$ 2,081.54 |
| Snow Plowing | \$ 6,000.00 |
| Natural Gas | \$ 43,034.10 |
| Cleaning Supplies/Services | \$ 2,805.70 |
| Minor Repairs/Renovations | \$ 11,615.38 |
| TOTAL | \$85,119.17 |

FACILITIES OPERATIONAL COSTS

Per Sq. M. Utility Costs

Average: \$30



\$25

Total fiscal year operating costs for each school site divided by the size of the building footprint. Includes power, sewage, garbage, heating, maintenance... etc. Value is dollars per square metre. Source: Facilities Data (calculated) Feb. 2023

Per Pupil Operating Costs


District Avg.: \$599



\$369

Total 2021-22 fiscal year operating costs divided by the total enrolment of the school as of Sept. 30th 2022. Source: Facilities Data (calculated) Feb. 2023

ASSIGNED BUDGETS

| | | |
|--|--|--|
| Total Budget Previous Year: \$33,577 Change from Prev. YR: -\$299 \$33,277 Total 2022-23 school budget allocation, as well as previous school year (excludes staffing, facility and energy op. costs). Source: Budget and Accounting Office April 2023 |  \$128 Total instructional and programming budget for 2022-23 school year, divided by the total student enrolment of the previous year. Budget excludes staffing, facility and energy op. costs. Source: Budget and Accounting Office April 2023 | Instructional Budget \$23,133 School budget related to instructional cost categories for the 2022-23 school year (e.g. Technology, textbooks, library, printing, misc. equipment, travel costs... etc.) Excludes staffing costs. Source: Budget and Accounting Office April 2023 |
|--|--|--|

Healthy Minds Budget

\$2,432

Budget allocation related to running the Healthy Minds program at the school for the 2022-23 school year. This program is a partnership with the school district, staff, parents, students and community partners to support student health and success at school. K-5 only. Source: Budget and Accounting Office April 2023

PSSC Budget

\$802

Budget for the Parent School Support Committee (PSSC) at this school during the 2022-23 school year. Source: Budget and Accounting Office April 2023



TOTAL ESTIMATED SALARY COSTS

Staff Summary

Total FTE: 34.7

Education Staff FTE: 20.4

Support Staff FTE: 14.3

Total Estimated Salary Cost: \$2,264,144

FTE (Full Time Equivalent) and estimated salary cost of total staff at this school. Displaying breakdown of FTE into education (teachers) and support staff categories (support includes administrative, classroom support, custodian... etc.). Data as of April 2023.



TRANSPORTATION

Transportation - Not Eligible

District Avg.: 25.2%



40.5% (104)

Proportion and number of students in-boundary that are not eligible for transportation under School Board policy. Source: Transportation Dept. June 2023

Transportation - Length of Bus Ride

Longest: 100 minute(s)

School Average: 36 minute(s)

District Average: 27 minute(s)

The longest, and average, school bus ride times for students to this school, in minutes. Source: Transportation Dept. March 2023

Proximity to School (KM)

District Avg.: 7.5KM



8.1

The average distance students must travel between their pick-up address and the school, in Kilometres. Source: Transportation March 2023

Route Count

20

Number of routes serving the school's bussed enrolments. Source: Transportation Dept. March 2023

Transportation - Eligible

District Avg.: 74.8%



59.5% (153)

Proportion and number of students eligible for transportation under the School Board policy. Source: Transportation Dept. June 2023





IMPACT ON THE LOCAL COMMUNITY AND ECONOMIC DEVELOPMENT

- ❖ Turning over an aged infrastructure to GNB for future considerations (for example, continued government use, sale of the building for development, demolition and future use of land)
- ❖ Potential addition of a brand-new facility within the Town of Oromocto resulting in improved community space outside instructional hours
- ❖ Attraction of families to the community when considering moving/postings and wanting children to attend a new, modern school



POSSIBLE CONSIDERATIONS INCLUDING IMPACT ON OTHER SCHOOLS:

FROM THE 2018 ERNST & YOUNG REPORT, THE FOLLOWING 5 SCENARIOS WERE PRESENTED:

- ❖ Close all schools within scope and replace them with a new 6-8 middle school and two K-5 elementary schools.
- ❖ Close all schools within scope and replace them with two new K-8 schools.
- ❖ Close all schools within scope and replace them with three new K-8 schools.
- ❖ Review the existing two middle schools compared to the EECD Planning Guidelines for Educational Facilities to determine what/if any space is deficient to the guidelines for a possible school addition and/or amalgamation in a mid-life upgrade scenario in conjunction with two new elementary schools.
- ❖ Close all schools within scope and replace them with a new K-2 Elementary, a new 3-5 school, and a new 6-8 school.

OUR VISION FOR NEW SCHOOLS

- ❖ 2 Gymnasiums of 591 m² with change rooms and ancillary spaces
- ❖ 32 General instruction classrooms
- ❖ Guidance/visiting professionals' offices
- ❖ 4 Kindergarten classrooms
- ❖ Student government room
- ❖ 1 Early Childhood development room
- ❖ Library/media centre
- ❖ 2 Multi-function classrooms
- ❖ Cafeteria/kitchen/stage
- ❖ MSTE spaces
- ❖ Recycling room
- ❖ Science room
- ❖ Administration space
- ❖ Resource/special care classrooms
- ❖ Personnel centre with staff lounge
- ❖ Student/project work areas
- ❖ Play areas and playfield
- ❖ Music rooms
- ❖ Art room
- ❖ Performing arts/theatre classroom

*Recent K-8 School Construction – capacity of 650 students



QUESTIONS AND ANSWERS





NEXT STEPS

- Public Meeting # 2 - to be held as series of subgroup meetings as follows:
 - Saturday Morning, March 16, 2024- Assiniboine Avenue Elementary School, Burton Elementary School, **Hubbard Elementary School (Venue)**.
 - Saturday Afternoon, March 16, 2024- Gesner Street Elementary School, **Summerhill Elementary School (Venue)**.
 - Saturday Morning, March 23, 2024- Morning session for presentations on Harold Peterson Middle School and **Ridgeview Middle School (Venue)**.
- Public Meeting # 3 – Evening of Thursday, May 9, 2024. A special District Education Council Meeting open to the public, where members will hold final conversations on the study, present a motion, and vote on the recommended conclusion.
- Government considers the recommendation and makes a decision
- For full detail and documentation of this study and its processes, please visit www.asdw.nbed.ca



THANK YOU

David McTimoney – Superintendent

Special Thanks to Paul MacIntosh, Shawn Tracey, Susan Young, School Principals, and their teams for the creation of this presentation.