

• • •  
**SUSTAINABILITY STUDY -  
BURTON ELEMENTARY SCHOOL**



**BURTON ELEMENTARY SCHOOL**

— Where Stars Shine! —

→ SATURDAY, JANUARY 27, 2024



# PUBLIC MEETING #1 AGENDA

- Introductions
- Review of Provincial Policy 409 Multi-Year School Infrastructure Planning
- Presentation of Information – Burton Elementary School
- Question and Answer Period
- What's Next?
  - Online Resources
  - Next Meetings



# INTRODUCTION

- ASD-W and EECD had initiated a review of schools in the Oromocto Education Centre area to examine potential scenarios for long-term infrastructure planning. The review found five potential scenarios for updating school infrastructure in the area, based on population growth and student enrolment numbers. These infrastructure plans have now reached a point where they have been recorded on the Stable Departmental Infrastructure Priorities (SDIP) list, under the name Oromocto K-8 Rationalization. In order to take next steps in the process, ASD-W is required to conduct a sustainability study as outlined in provincial Policy 409-Multiyear School Infrastructure Planning.



# PROVINCIAL POLICY 409

## MULTI-YEAR SCHOOL INFRASTRUCTURE PLANNING

- Outlines a number of responsibilities to do with facilities in our system
- Sections 6.4, 6.5, 6.6, and 6.7 are relevant for sustainability studies
- Three public meetings are required as outlined:
  - Meeting 1 – Presentation of information from District regarding school
  - Meeting 2 – Presentation from stakeholders regarding their thoughts on the sustainability of the school and relevant factors
  - Meeting 3 – Final review of information by District Education Council (DEC) and subsequent motion on next steps.



# PROVINCIAL POLICY 409

## MULTI-YEAR SCHOOL INFRASTRUCTURE PLANNING

- There are several potential outcomes as described in section 6.4.3 of the policy, including:
  - Maintaining the status quo
  - Repairing the school
  - Grouping schools together
  - Closing the school
  - Placing some students elsewhere



# INFORMATION TO BE PRESENTED

- Enrolment
- Quality of Education Programs & Services
- Transportation
- Finances
- Impact on Other Schools
- Building Challenges/ Health & Safety
- Impact on Local Community
- Economic Development
- Ernst & Young Report

# ENROLMENT

## Total Enrolment 2022-23



38

Number of pupils attending the school. The graph represents up to 6 years of total enrolment history at the school.

## Projected Utilization in 5 years (Projected Enrolment)



70% (44)

Proportion of the school's capacity projected to be in use 5 years from now.

# ENROLMENT BY GRADE LEVEL

## October 1, 2023

	English Prime	Total
K	12	12
1	15	15
2	14	14
		41



# MAXIMUM CLASS SIZES

Grade Level	Maximum Student Count
Kindergarten – Grade 2	21
Grade 3	26
K – 3 Combined Classes	16
Grade 4 – 6	28
Grades 3 – 5 Combined Classes	23
Grades 7 – 12	29
Grades 5 – 12 Combined Classes	24

# QUALITY OF EDUCATION PROGRAMS & SERVICES

## Student to Teacher Ratios

Year	Provincial Staffing Formula		Actual	
	Total Students : Total Teachers	Students : Teachers	Total Students : Total Teachers	Students : Teachers
2023-2024	41 : 3.77	10.88 : 1	41 : 4.50	9.11 : 1



# CORE CURRICULUM AND SUPPORTS

## Burton Elementary School

Early French Immersion	No
Late French Immersion	No
Music and or Fine Arts Specialists	No
EST - Resource	Yes
EST - Guidance	No
Academic Support Teacher	No
District Curriculum Lead Coach Team	Provides Support to Schools through Subject Coordinators
Behaviour Intervention Mentor	No
Science Lab	No
Computer Lab	No
Gymnasium	No

# QUALITY OF EDUCATION PROGRAMS & SERVICES

- ❖ Students from Burton Elementary School enter the English Prime program in Kindergarten.
- ❖ Benefits of our small class sizes:
  - better teacher to student ratios
  - impactful connections with students
  - all teachers have in-depth knowledge about students throughout their Burton journey.
  - increased learning potential for all students
  - stronger relationships and better communication with families- wrap-around care
- ❖ Physical education specialist once per week who also provides quality music instruction.
- ❖ Embedded Code of Conduct-Staff and students developed a school code of conduct so that all students are hearing and seeing common language and practices throughout their years at Burton.
- ❖ School improvement focus on strengthening classroom supports in literacy and implementation of new literacy curriculum
- ❖ Teaching principal provides physical education class 4 out of 5 days per week AND connects students to administration in a positive way.
- ❖ Staff regularly seeks professional learning and support from district leads to improve instruction



# SPECIAL EVENTS THAT ENCOURAGE COMMUNITY SCHOOL PARTNERSHIPS

- ❖ Halloween Scavenger Hunt
- ❖ Breakfast and Lunch Programs
- ❖ Burton Volunteers
- ❖ Remembrance Day Ceremonies
- ❖ Family Picnic celebration
- ❖ Presentations; Earth Rangers, Matt the Music Man, UNB World's UNBound, The Duncan Pogo Show
- ❖ Holiday Concerts
- ❖ Parent School Support Committee
- ❖ Burton Food Drive
- ❖ Field Trips; Gilbert Farms, Science East, Playhouse theatre, Moxon's Country Pumpkin
- ❖ Pet Supply Drive for SPCA
- ❖ Jump Rope for Heart



# SPECIAL EVENTS THAT ENCOURAGE COMMUNITY SCHOOL PARTNERSHIPS CONTINUED...

- ❖ Volunteer Celebration
- ❖ Terry Fox Walk
- ❖ Wolastoqey Wednesday
- ❖ The Grinch Presentation
- ❖ Diversity and Respect Week
- ❖ Hot lunch partners-Subway and Pizza Delight
- ❖ K-5 Technology Passport pilot project



- ❖ Cultural Awareness
- ❖ Truth and Reconciliation Week
- ❖ Partnerships with OHS Environmental Science class
- ❖ Monthly Assemblies and awards
- ❖ Community Support – Gilbert Farms, Burton Lions Club, Burton Ultramar, LSD Reps. Burton Area Citizens Association, Local Mason Lodge, Knights of Columbus, Merle Smith & Sons

# SPECIAL EVENTS THAT ENCOURAGE COMMUNITY SCHOOL PARTNERSHIPS CONTINUED...

- ❖ Books for Bikes
- ❖ Holiday Family Turkey dinner
- ❖ Student Swag sales
- ❖ Monthly Skills focus
- ❖ Skating at Kings Arrow
- ❖ 100 Days celebration
- ❖ Support from CFB Gagetown





# STUDENT VOICE

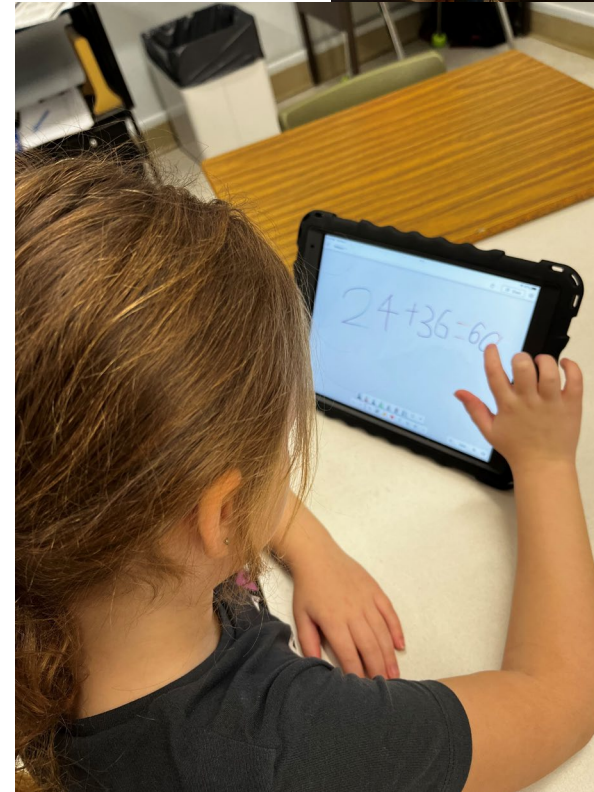
- ❖ Senior care home card exchange
- ❖ Truth and Reconciliation Day
- ❖ Multiple Spirit days
- ❖ Milk helpers
- ❖ YES Day-Student planned
- ❖ Yearly holiday drama production
- ❖ Heart Healthy challenges
- ❖ Personal Celebrations – birthdays, new siblings
- ❖ Student and family surveys
- ❖ Co-constructed expectations





# SCHOOL BENEFITS

- ❖ As a smaller school we build **IMPACTFUL CONNECTIONS** with our students
- ❖ Leadership is shared and focused on school improvement, particularly implementing science of reading with fidelity
- ❖ Upgraded space-saving technology for instruction (2023)
- ❖ Class set of iPads to access engaging learning tools and sites(2022)



# SCHOOL BENEFITS

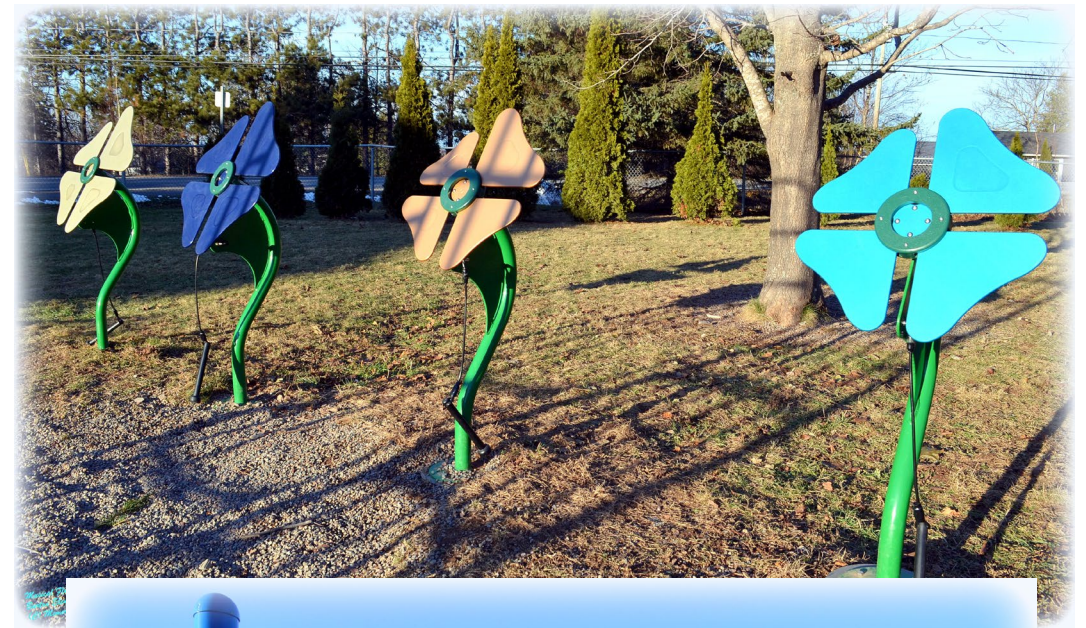
- ❖ Permanent staff make up the core team- minimal staff turnover
- ❖ A dedicated PSSC Committee
- ❖ Symbiotic relationship with community
- ❖ Designated funds for building diverse classroom libraries





# SCHOOL BENEFITS CONTINUED....

- ❖ Strong, core group of volunteers that organize and facilitate school community events, breakfast program and the hot lunch program
- ❖ Fully functional and well-equipped kitchen
- ❖ Accessible playground
- ❖ Upgraded ventilation system (2022) – improved energy star rating
- ❖ Foodbank partnership and community connection- feeding families throughout long breaks



# SCHOOL CHALLENGES



Burton Elementary School

- ❖ Insufficient parking
- ❖ No professional areas for visiting specialists to work privately\*
- ❖ No dedicated school counsellor or BIM to support proactive social and emotional learning
- ❖ No breakout areas in the classrooms
- ❖ Limited washrooms for staff and students
- ❖ Limited childcare available in the area

\*-See next slide



# Physical Space AT Capacity

- ❖ No additional classrooms available
- ❖ Library, resource room and breakout space in one space
- ❖ Staff room and admin assistant workspace SHARED
- ❖ No professional space for meetings with more than 2 people
- ❖ ISD and District support people have to meet in the kitchen or a shared space - no privacy

# BUILDING CHALLENGES- HEALTH & SAFETY

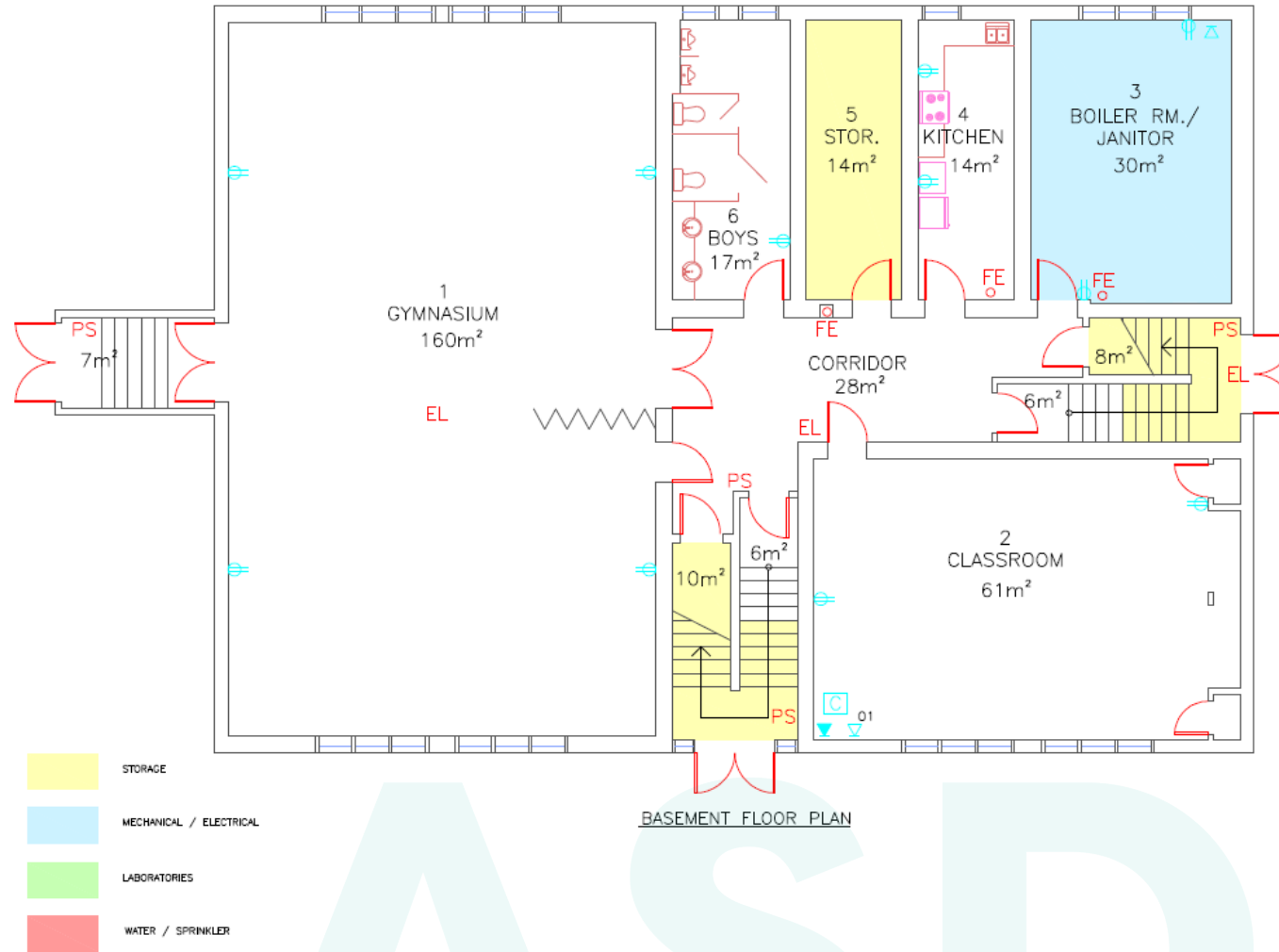
- ❖ There is no lift or elevator to access the second floor.
- ❖ There is no sprinkler system (automatic fire suppression system), fire prevention alarm system in the facility.
- ❖ The school does not have a cafeteria.



# BUILDING SUMMARY

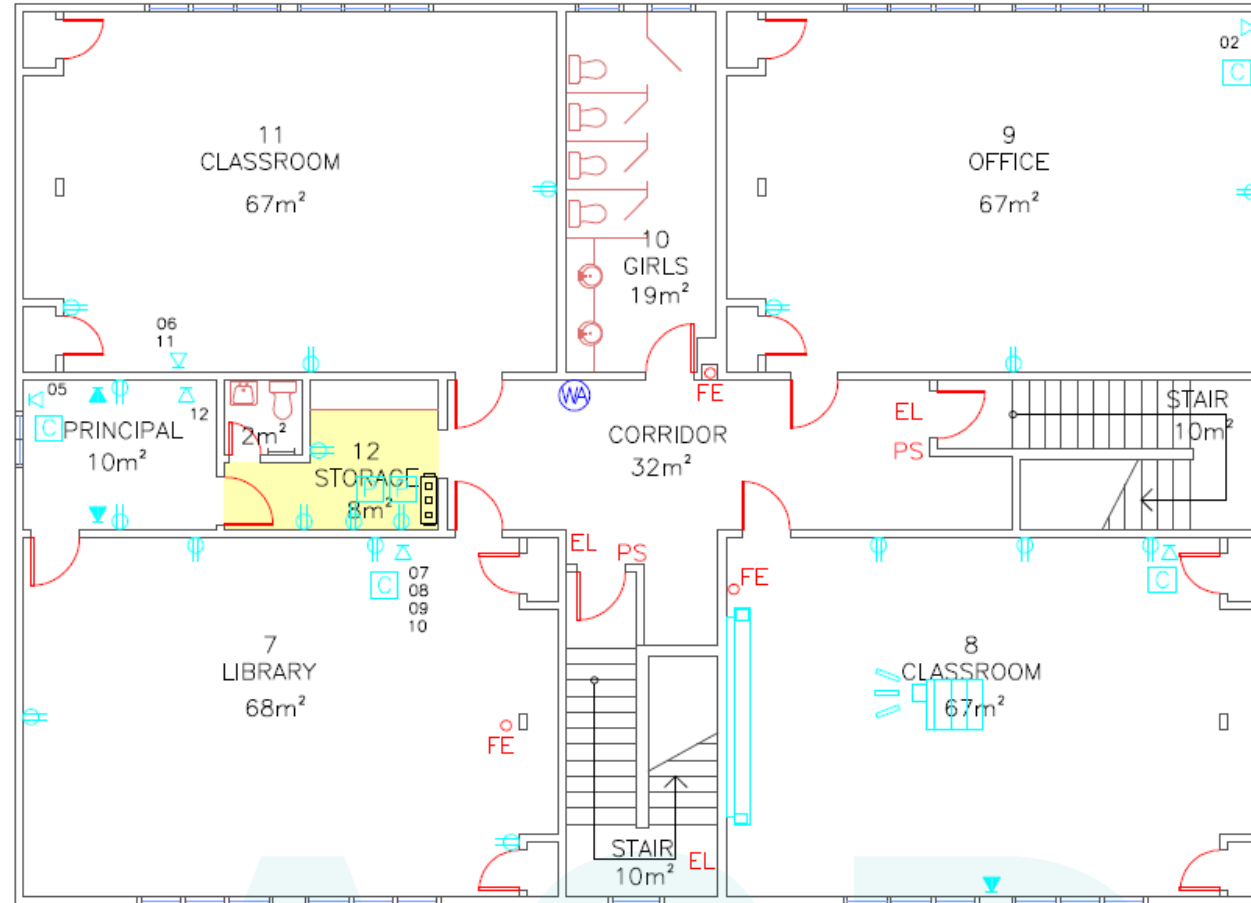
- ❖ Built in 1961.
- ❖ Heating system is hot water boiler with oil.
- ❖ Cleaning services (janitorial) provided by Contract Cleaning Company
- ❖ Burton School is a wood frame structure in good condition.
- ❖ The school has an Auditorium.
- ❖ It is a two-storey building and the school space is 811 square meters.
- ❖ Washroom was upgraded in 2000.
- ❖ Fire integrity project in 2001.
- ❖ Removed carpet and paneling from gym walls and replace with gypsum board, crack filled and painted in 2010.
- ❖ New sewage treatment system installed in 2012.
- ❖ Building envelope was added in 2016, 2017.
- ❖ Lighting upgrades in 2018.
- ❖ New mechanical ventilation system in 2022.

# BUILDING SUMMARY





# BUILDING SUMMARY



# FUNCTIONAL CAPACITY DATA

## Room Details

Number of Classrooms: 3

Number of Modulars: 0

Number of classrooms (excluding modulars) and number of modulars on-site.

## Capacity Information



60%

The functional capacities of the school both excluding, and including spaces provided by modular buildings (where applicable), divided by the total enrolment at the school as of September 30th, 2022. The graph displays the utilization rate inclusive of modular capacities. Data Verified: Jan. 30th, 2023

## Surplus Student Spaces



25

The extent to which the school's 2022-23 enrolment compares to its functional capacity of available student spaces (excluding modulars). A negative value indicates a shortfall of permanent student spaces compared to total enrolment. A positive value indicates a surplus of student spaces available compared to the total enrolment. Data verified: Feb. 2023

# CAPITAL INVESTMENTS

School Year	Project	Capital Improvements	Major Capital Improvements
2000-2001	Washroom Upgrade	\$ 52,339	
2001-2002	Fire Integrity	\$ 24,127	
2010-2011	Interior Renovation	\$ 10,557	
2010-2011	Sewage System	\$ 2,720	
2011-2012	Sewage System	\$ 8,810	
2012-2013	Heating System	\$ 17,185	
2012-2013	Sewage System	\$ 93,088	
2016-2017	Building Envelope	\$ 4,648	
2017-2018	Building Envelope	\$ 46,461	
2018-2019	Lighting	\$ 26,505	
2022-2023	Ventilation System		\$ 258,049
<b>Total</b>		<b>\$ 286,440</b>	<b>\$ 258,049</b>

# PHYSICAL PLANT STATUS

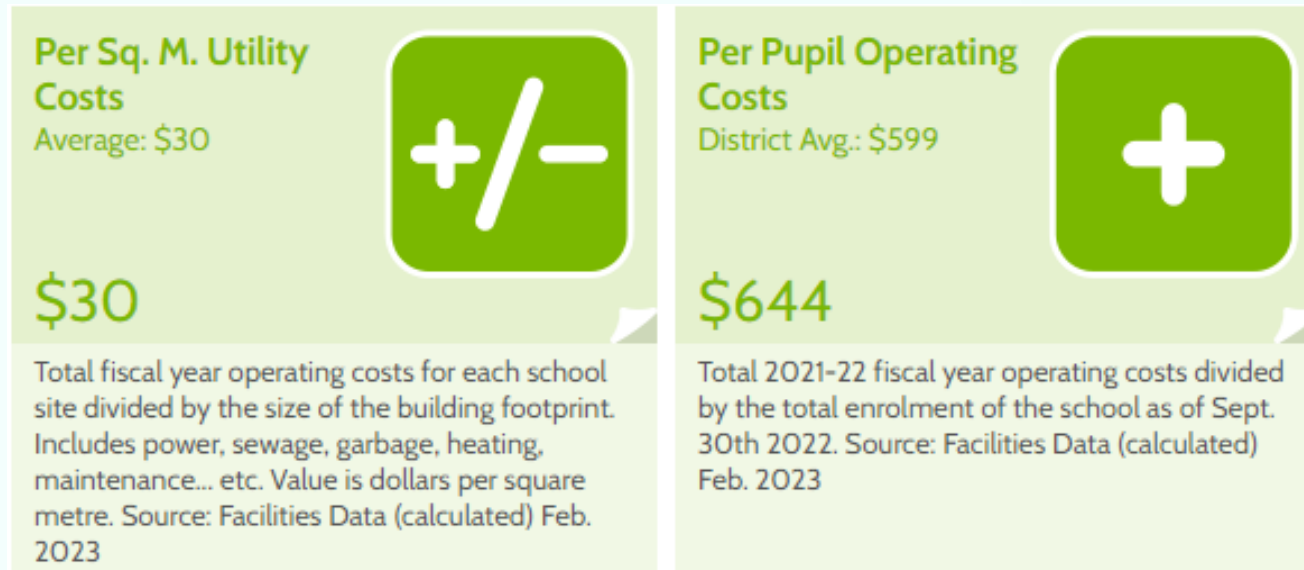
## School Physical Plant Review / Report by School

School: Burton Elementary School (ASD-W)		Grades: Kindergarten, 1-2		Year Built: 1961
ASD-W	School No: 2501	City/Village: Burton	Enrolment:40	Total Area (m2): 811
<b>Mechanical and Electrical Systems</b>		<b>Description</b>	<b>Priority</b>	<b>Est. Cost</b>
Electrical	Electrical Supply and Distribution	Electrical system upgrade. Power Distribution, panels, receptacles. NOTE: Estimated costs updated in October '11. Price estimate result of review by DSS - email dated October 11, 2011.	2	\$50,000.00
<b>Sub Total (Category)</b>				<b>\$50,000.00</b>
<b>Building Interior and Additions</b>		<b>Description</b>	<b>Priority</b>	<b>Est. Cost</b>
Interior Finishes	Ceilings	Upgrade all old ceilings & lighting. 5 classrms @ 70 sqm ea= 350 sqm. NOTE: Estimated costs updated in October '11. Price estimate result of review by DSS - email dated October 11, 2011.	3	\$36,000.00
Interior Aecessibility	Lift	Elevator and Access to bldg.. NOTE: Estimated costs updated in October '11. Price estimate result of review by DSS - email dated October 11, 2011. A new exterior enclosure / site work could dramatically impact the estimate.	2	\$220,000.00
<b>Sub Total (Category)</b>				<b>\$256,000.00</b>
<b>Building Exterior and Site</b>		<b>Description</b>	<b>Priority</b>	<b>Est. Cost</b>
Site	Site Improvement	Curbing & Driveway refinishing. Paving 1068 sqm & 122 m of curbing. NOTE: Estimated costs updated in October '11. Price estimate result of review by DSS - email dated October 11, 2011.	3	\$55,000.00
<b>Sub Total (Category)</b>				<b>\$55,000.00</b>
<b>SCHOOL TOTAL</b>				<b>\$361,000.00</b>

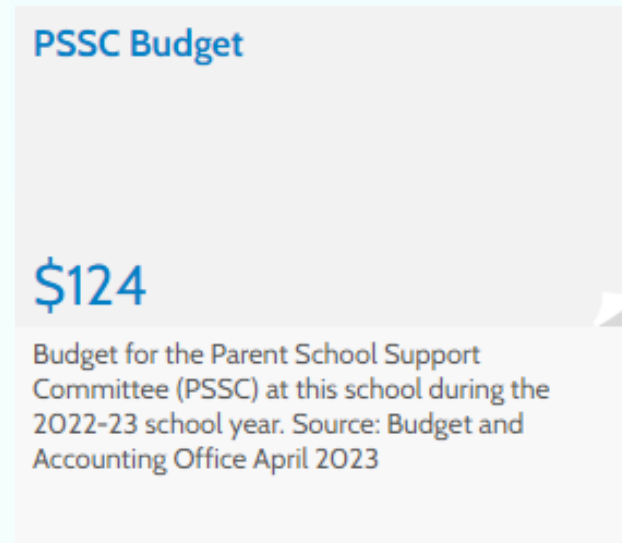
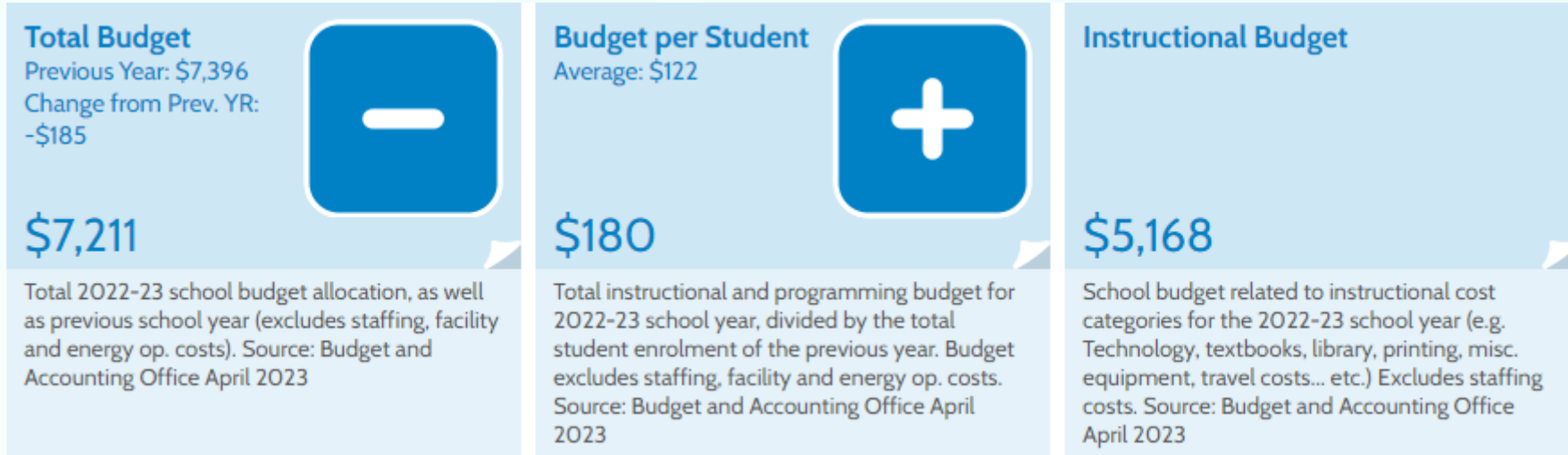
# FACILITIES OPERATIONAL COSTS

FISCAL YEAR 2022/2023	FACILITIES COST
Electricity	\$ 3,444.17
Water/Sewage	\$ -
Garbage Removal	\$ 326.39
Snow Plowing	\$ 4,000.02
Heating Fuel	\$ 13,679.55
Cleaning Supplies/Services	\$ 166.04
Minor Repairs/Renovations	\$ 9,908.30
<b>TOTAL</b>	<b>\$ 31,524.47</b>

# FACILITIES OPERATIONAL COSTS



# ASSIGNED BUDGETS





# TOTAL ESTIMATED SALARY COSTS

## Staff Summary

Total FTE: 9.7

Education Staff FTE: 4.6

Support Staff FTE: 5.1


Total Estimated Salary Cost: \$588,910

FTE (Full Time Equivalent) and estimated salary cost of total staff at this school. Displaying breakdown of FTE into education (teachers) and support staff categories (support includes administrative, classroom support, custodian... etc.). Data as of April 2023.



# TRANSPORTATION STUDY

**Proximity to School (KM)**  
District Avg.: 7.5KM



**1.9**


The average distance students must travel between their pick-up address and the school, in Kilometres. Source: Transportation March 2023

**Route Count**

**4**

Number of routes serving the school's bussed enrolments. Source: Transportation Dept. March 2023


**Transportation - Eligible**  
District Avg.: 74.8%



**86.2%** (75)

Proportion and number of students eligible for transportation under the School Board policy. Source: Transportation Dept. June 2023

**Transportation - Not Eligible**  
District Avg.: 25.2%



**13.8%** (12)

Proportion and number of students in-boundary that are not eligible for transportation under School Board policy. Source: Transportation Dept. June 2023

**Transportation - Length of Bus Ride**

Longest: 40 minute(s)  
School Average: 16 minute(s)  
District Average: 27 minute(s)

The longest, and average, school bus ride times for students to this school, in minutes. Source: Transportation Dept. March 2023



# IMPACT ON THE LOCAL COMMUNITY AND ECONOMIC DEVELOPMENT

- ❖ School serves as a hub in the community.
- ❖ Small school setting for young students in Grades K-2.
- ❖ Some families from Burton benefit from school proximity to their home.
- ❖ Benefit of having a school as a staple within the small, rural community.
- ❖ Close community ties with local service groups such as Burton Lions Club.
- ❖ Small shift of employment opportunity with staff moving from Burton to Oromocto.
- ❖ Future of vacant building would be unknown; positive or negative effect.



# POSSIBLE CONSIDERATIONS INCLUDING IMPACT ON OTHER SCHOOLS:

FROM THE 2018 ERNST & YOUNG REPORT, THE FOLLOWING 5 SCENARIOS WERE PRESENTED:

- ❖ Close all schools within scope and replace them with a new 6-8 middle school and two K-5 elementary schools.
- ❖ Close all schools within scope and replace them with two new K-8 schools.
- ❖ Close all schools within scope and replace them with three new K-8 schools.
- ❖ Review the existing two middle schools compared to the EECD Planning Guidelines for Educational Facilities to determine what/if any space is deficient to the guidelines for a possible school addition and/or amalgamation in a mid-life upgrade scenario in conjunction with two new elementary schools.
- ❖ Close all schools within scope and replace them with a new K-2 Elementary, a new 3-5 school, and a new 6-8 school.

# OUR VISION FOR NEW SCHOOLS

- ❖ 2 Gymnasiums of 591 m<sup>2</sup> with change rooms and ancillary spaces
- ❖ 32 General instruction classrooms
- ❖ Guidance/visiting professionals' offices
- ❖ 4 Kindergarten classrooms
- ❖ Student government room
- ❖ 1 Early Childhood development room
- ❖ Library/media centre
- ❖ 2 Multi-function classrooms
- ❖ Cafeteria/kitchen/stage
- ❖ MSTE spaces
- ❖ Recycling room
- ❖ Science room
- ❖ Administration space
- ❖ Resource/special care classrooms
- ❖ Personnel centre with staff lounge
- ❖ Student/project work areas
- ❖ Play areas and playfield
- ❖ Music rooms
- ❖ Art room
- ❖ Performing arts/theatre classroom

\*Recent K-8 School Construction – capacity of 650 students



# QUESTIONS AND ANSWERS

Burton Elementary School





# NEXT STEPS

- Public Meeting # 2 - to be held as series of subgroup meetings as follows:
  - Saturday Morning, March 16, 2024- Assiniboine Avenue Elementary School, Burton Elementary School, **Hubbard Elementary School (Venue)**.
  - Saturday Afternoon, March 16, 2024- Gesner Street Elementary School, **Summerhill Elementary School (Venue)**.
  - Saturday Morning, March 23, 2024- Morning session for presentations on Harold Peterson Middle School and **Ridgeview Middle School (Venue)**.
- Public Meeting # 3 – Evening of Thursday, May 9, 2024. A special District Education Council Meeting open to the public, where members will hold final conversations on the study, present a motion, and vote on the recommended conclusion.
- Government considers the recommendation and makes a decision
- For full detail and documentation of this study and its processes, please visit [www.asdw.nbed.ca](http://www.asdw.nbed.ca)

# THANK YOU

David McTimoney – Superintendent

Special Thanks to Paul MacIntosh, Shawn Tracey, Susan Young, School Principals, and their teams for the creation of this presentation.