



# SUSTAINABILITY STUDY -

# ASSINIBOINE AVENUE ELEMENTARY



→ SATURDAY, JANUARY 27, 2024



# PUBLIC MEETING #1 AGENDA

- Introductions
- Review of Provincial Policy 409 Multi-Year School Infrastructure Planning
- Presentation of Information – Assiniboine Avenue Elementary School
- Question and Answer Period
- What's Next?
  - Online Resources
  - Next Meetings





# INTRODUCTION

- ASD-W and EECD had initiated a review of schools in the Oromocto Education Centre area to examine potential scenarios for long-term infrastructure planning. The review found five potential scenarios for updating school infrastructure in the area, based on population growth and student enrolment numbers. These infrastructure plans have now reached a point where they have been recorded on the Stable Departmental Infrastructure Priorities (SDIP) list, under the name Oromocto K-8 Rationalization. In order to take next steps in the process, ASD-W is required to conduct a sustainability study as outlined in provincial Policy 409-Multiyear School Infrastructure Planning.



# PROVINCIAL POLICY 409

## MULTI-YEAR SCHOOL INFRASTRUCTURE PLANNING

- Outlines a number of responsibilities to do with facilities in our system
- Sections 6.4, 6.5, 6.6, and 6.7 are relevant for sustainability studies
- Three public meetings are required as outlined:
  - Meeting 1 – Presentation of information from District regarding school
  - Meeting 2 – Presentation from stakeholders regarding their thoughts on the sustainability of the school and relevant factors
  - Meeting 3 – Final review of information by District Education Council (DEC) and subsequent motion on next steps.



# PROVINCIAL POLICY 409

## MULTI-YEAR SCHOOL INFRASTRUCTURE PLANNING

- There are several potential outcomes as described in section 6.4.3 of the policy, including:
  - Maintaining the status quo
  - Repairing the school
  - Grouping schools together
  - Closing the school
  - Placing some students elsewhere



# INFORMATION TO BE PRESENTED

- Enrolment
- Quality of Education Programs & Services
- Transportation
- Finances
- Impact on Other Schools
- Building Challenges/ Health & Safety
- Impact on Local Community
- Economic Development
- Ernst & Young Report

# ENROLMENT

Total Enrolment  
2022-23



251

Number of pupils attending the school. The graph represents up to 6 years of total enrolment history at the school.

Projected Utilization  
in 5 years  
(Projected Enrolment)



67% (255)

Proportion of the school's capacity projected to be in use 5 years from now.

# ENROLMENT BY GRADE LEVEL

## October 1, 2023

	English Prime	Early French Immersion (Gr. 1 Entry)	Total
K	70		70
1	52	29	81
2	56	35	91
			242



# MAXIMUM CLASS SIZES

Grade Level	Maximum Student Count
Kindergarten – Grade 2	21
Grade 3	26
K – 3 Combined Classes	16
Grade 4 – 6	28
Grades 3 – 5 Combined Classes	23
Grades 7 – 12	29
Grades 5 – 12 Combined Classes	24

# QUALITY OF EDUCATION PROGRAMS & SERVICES

## Student to Teacher Ratios

Year	Provincial Staffing Formula		Actual	
	Total Students : Total Teachers	Students : Teachers	Total Students : Total Teachers	Students : Teachers
2023-2024	242 : 18.19	13:30 : 1	242 : 20.00	12.10 : 1



# CORE CURRICULUM AND SUPPORTS

Assiniboine Avenue Elementary	
Early French Immersion	Yes
Late French Immersion	N/A
Music and or Fine Arts Specialists	Yes
EST - Resource	Yes
EST - Guidance	Yes
Academic Support Teacher	Yes
District Curriculum Lead Coach Team	Provides Support to Schools through Subject Coordinators
Behaviour Intervention Mentor	Yes
Science Lab	No
Computer Lab	No
Gymnasium	Yes



# QUALITY OF EDUCATION PROGRAMS & SERVICES

- ❖ Holistic Curriculum Pilot Site 2023-24
- ❖ Innovative Learning Site for French 2022-23, 2023-24
- ❖ French Immersion program at Grade 1 entry. Feeder schools for Grade 1 FI include: Burton Elementary, Geary Elementary, Sunbury West School, Gagetown School.
- ❖ First Nations Language and Culture Education



# SPECIAL EVENTS THAT ENCOURAGE COMMUNITY SCHOOL PARTNERSHIPS

- ❖ Parent Volunteers
- ❖ Breakfast and Lunch Programs
- ❖ University and College Interns
- ❖ Remembrance Day Ceremony with the Oromocto Legion Branch 93
- ❖ Fire Safety Week – Oromocto Fire Dept.
- ❖ ASD-W Newcomer Support Centre
- ❖ Great Minds Think Outside



- ❖ Scholastic Book Fair
- ❖ Family Picnic
- ❖ Parent School Support Committee
- ❖ Oromocto Food Drive
- ❖ Native Education Advisory Team
- ❖ Terry Fox Walk and Roll each year



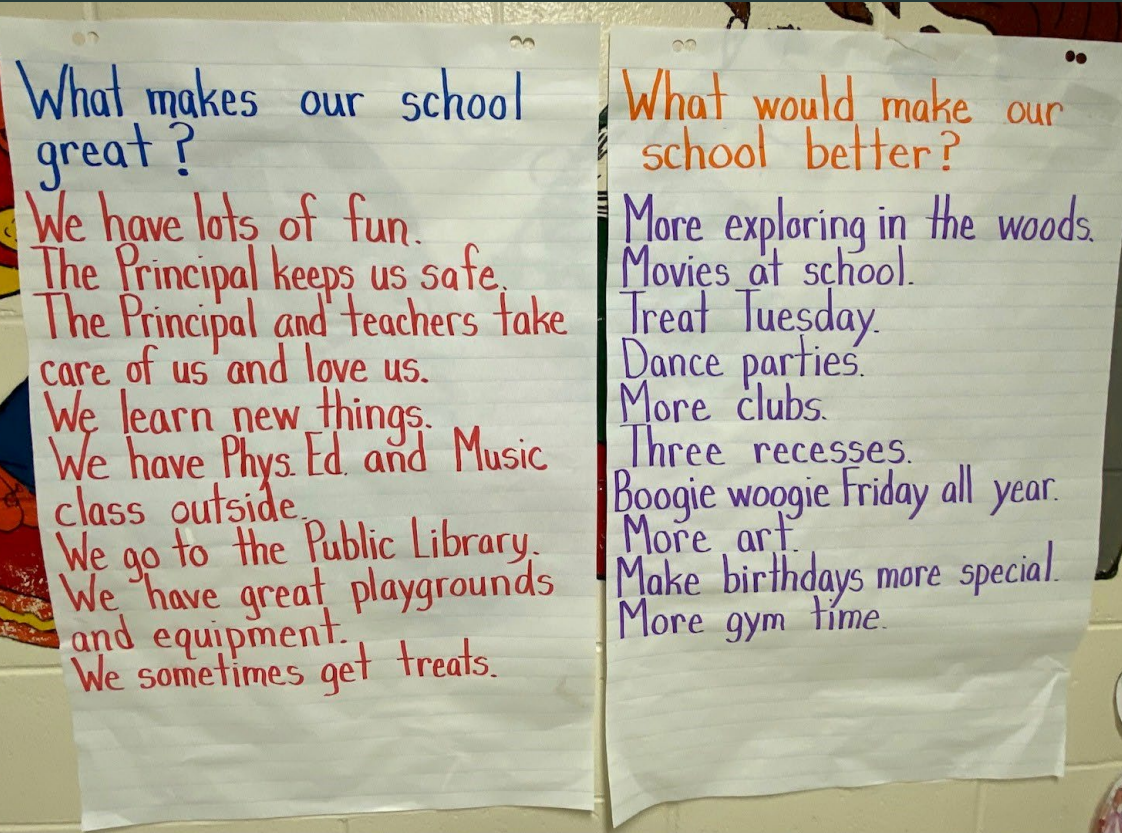
# SPECIAL EVENTS THAT ENCOURAGE COMMUNITY SCHOOL PARTNERSHIPS CONTINUED...

- ❖ Welamuktuk Oromocto First Nation
- ❖ Nature NB
- ❖ Intramurals
- ❖ Jump Rope for Heart
- ❖ Military Family Resource Centre
- ❖ Harold Peterson Student Leaders
- ❖ Jim Gilbert's Wheels and Deals partnership



- ❖ Indigo Love of Reading Foundation
- ❖ CFB Gagetown
- ❖ First Book Canada
- ❖ UNB Worlds Unbound
- ❖ Moncton Food Bank Program

# STUDENT VOICE



The Student Voice Group meets with the Principal three times a year to review strengths of the school and areas for improvement.

- Outdoor Learning
- Orange Shirt Day Activities
- **Clubs & Intramurals**
- Spirit Weeks
- Yes Day
- WITS Pals
- Student-led Learning Activities



# SCHOOL BENEFITS

- ❖ As a K-2 school we have an early childhood, primary-aged focus for the whole school.
- ❖ Multiple classes at K-2 to support a strong a Professional Learning Community.
- ❖ Strong culture of volunteers and parental support.
- ❖ Celebration of diversity and multi-culturalism.
- ❖ Focus on outdoor learning.
- ❖ High academic expectations.
- ❖ Explicit teaching of social emotional skills.
- ❖ First Nation Enhancement School
- ❖ We offer French Immersion







# SCHOOL BENEFITS CONTINUED....

- ❖ We are a First Nations Enhancement school with a dedicated First Nation room and close relationship with Welamukatuk community
- ❖ Student-centered learning.
- ❖ We have a Core Leadership /Positive Behaviour Intervention Support to focus on the School Improvement Plan and positive school culture
- ❖ A fun, joyful place to learn and grow!





# SCHOOL CHALLENGES

- ❖ Age of the building.
- ❖ Expected updates for playground.
- ❖ Parking lot and student drop off limitations.
- ❖ A very small staff room.
- ❖ Parts of the playground become marshy and unusable for months each year.

# BUILDING CHALLENGES- HEALTH & SAFETY

- ❖ There is no sprinkler system (automatic fire suppression system), fire prevention alarm system in the facility.
- ❖ The school does not have a cafeteria.



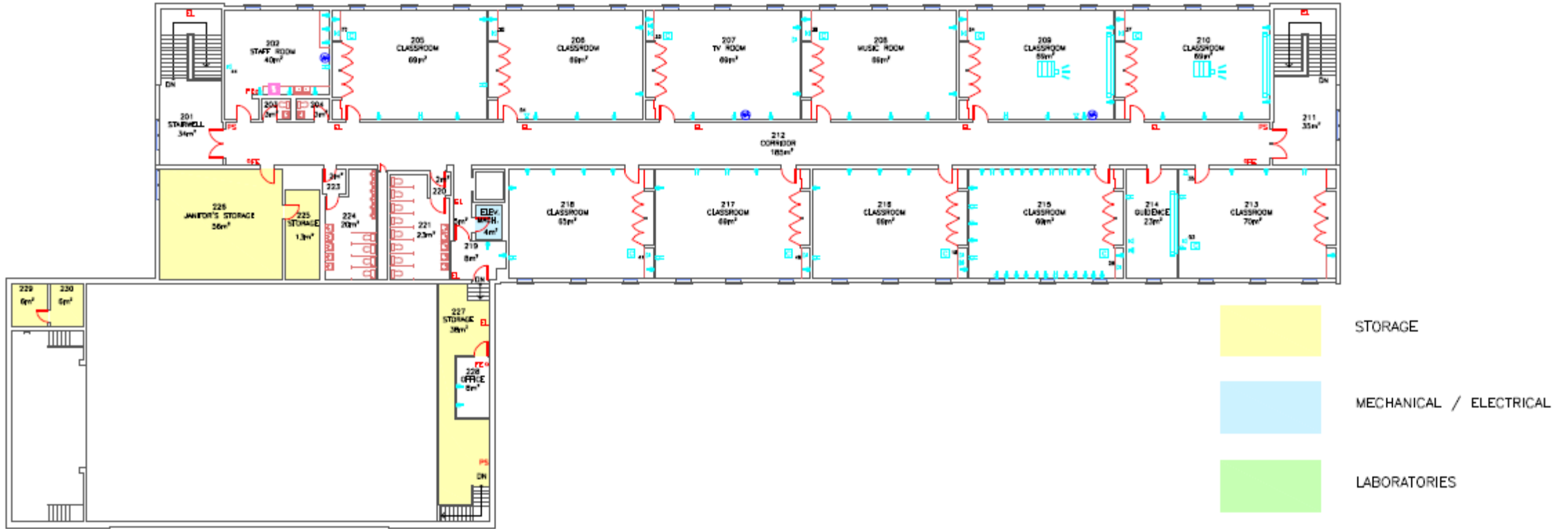
# BUILDING SUMMARY

- ❖ Built in 1957. Located next door to civic center.
- ❖ Owned by the Province of New Brunswick. It was originally built by DND in 1957 and turned over to the province in 1967.
- ❖ Cleaning services (janitorial) provided by Contract Cleaning Company
- ❖ Heating system is hot water boiler with natural gas.
- ❖ There is an elevator to access the second floor.
- ❖ Assiniboine School is a brick/concrete structure. It is a two-storey building and the school space is 3068 square meters.
- ❖ The school has a gymnasium.
- ❖ Electrical supply and distribution upgrades in 2003.
- ❖ Fire integrity project in 2003.
- ❖ Site improvements in 2003, 2004.
- ❖ Elevator upgrades in 2005, 2006.
- ❖ Heating system upgrades in 2006, 2015.
- ❖ Washroom upgrades in 2009, 2011, 2012.
- ❖ Roof replacements in 2005, 2018, 2019.

# BUILDING SUMMARY



# BUILDING SUMMARY



# FUNCTIONAL CAPACITY DATA

## Room Details

Number of Classrooms: 18

Number of Modulars: 0

Number of classrooms (excluding modulars) and number of modulars on-site.

## Capacity Information



66%

The functional capacities of the school both excluding, and including spaces provided by modular buildings (where applicable), divided by the total enrolment at the school as of September 30th, 2022. The graph displays the utilization rate inclusive of modular capacities. Data Verified: Jan. 30th, 2023

## Surplus Student Spaces



123

The extent to which the school's 2022-23 enrolment compares to its functional capacity of available student spaces (excluding modulars). A negative value indicates a shortfall of permanent student spaces compared to total enrolment. A positive value indicates a surplus of student spaces available compared to the total enrolment. Data verified: Feb. 2023

# CAPITAL INVESTMENTS

School Year	Project	Capital Improvements
2000-2001	Roof Replacement	\$ 104
2003-2004	Electrical Supply and Distribution	\$ 36,976
2003-2004	Fire Integrity	\$ 18,889
2003-2004	Site Improvement	\$ 4,213
2004-2005	Site Improvement	\$ 49,670
2005-2006	Elevator	\$ 12,810
2005-2006	Roof Replacement	\$ 6,075
2006-2007	Elevator	\$ 221,380
2006-2007	Heating System	\$ 30,800
2006-2007	Roof Replacement	\$ 81,261
2007-2008	Heating System	\$ 15,325
2009-2010	Masonry - Brick Repointing	\$ 8,800
2009-2010	Washroom Upgrade	\$ 100,977
2011-2012	Washroom Upgrade	\$ 7,716
2012-2013	Washroom Upgrade	\$ 64,310
2015-2016	Heating and Ventilation Maintenance	\$ 20,461
2018-2019	Roof Replacement	\$ 5,460
2019-2020	Roof Replacement	\$ 64,962
<b>Total</b>		<b>\$700,090</b>



# PHYSICAL PLANT STATUS

## School Physical Plant Review / Report by School

School: Assiniboine Avenue Elementary School (ASD-W)		Grades: Kindergarten, 1-2		Year Built: 1957
ASD-W	School No: 2506	City/Village: Oromocto	Enrolment:260	Total Area (m2): 3068
<b>Mechanical and Electrical Systems</b>		<b>Description</b>	<b>Priority</b>	<b>Est. Cost</b>
Heating and Ventilation	Ventilation System	New Ventilation System 3069 sqm. Note: Estimated costs updated Sept'13.	2	\$755,000.00
			<b>Sub Total (Category)</b>	<b>\$755,000.00</b>
<b>Building Exterior and Site</b>		<b>Description</b>	<b>Priority</b>	<b>Est. Cost</b>
Building Envelope	Exterior Walls	Small cracks in the mortar	3	\$21,000.00
Site	Site Improvement	Repave the staff parking lot and entry way	2	\$146,700.00
Building Envelope	Exterior Windows	Some windows are starting to leak into interior walls.	2	\$220,000.00
Site	Other	The school would like to add another 6000 square feet of parking in the parent drop off area.	3	\$60,000.00
			<b>Sub Total (Category)</b>	<b>\$447,700.00</b>
<b>Building Interior and Additions</b>		<b>Description</b>	<b>Priority</b>	<b>Est. Cost</b>
Interior Finishes	Ceilings	Replace ceiling and upgrade lighting in 5 classrms @ 70 sqm = 350 sqm, ceilings and lighting. NOTE: Estimated costs updated in Aug'11.	3	\$40,000.00
			<b>Sub Total (Category)</b>	<b>\$40,000.00</b>
				<b>SCHOOL TOTAL \$1,242,700.00</b>

# FACILITIES OPERATIONAL COSTS

FISCAL YEAR 2022/2023	FACILITIES COST
Electricity	\$ 16,645.20
Water/Sewage	\$ 3,444.34
Garbage Removal	\$ 2,122.70
Snow Plowing	\$ 6,000.00
Natural Gas	\$ 46,173.16
Cleaning Supplies/Services	\$ 2,815.24
Minor Repairs/Renovations	\$ 8,936.17
<b>TOTAL</b>	<b>\$86,136.81</b>

# FACILITIES OPERATIONAL COSTS

Per Sq. M. Utility  
Costs  
Average: \$30



\$26

Total fiscal year operating costs for each school site divided by the size of the building footprint. Includes power, sewage, garbage, heating, maintenance... etc. Value is dollars per square metre. Source: Facilities Data (calculated) Feb. 2023

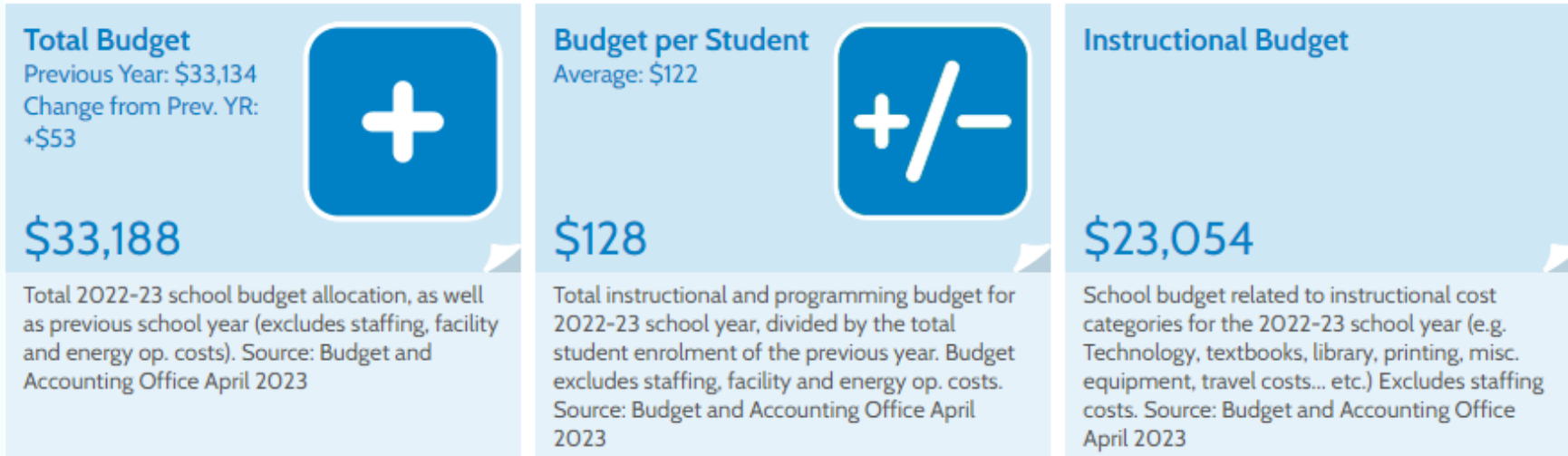
Per Pupil Operating  
Costs  
District Avg.: \$599



\$309

Total 2021-22 fiscal year operating costs divided by the total enrolment of the school as of Sept. 30th 2022. Source: Facilities Data (calculated) Feb. 2023

# ASSIGNED BUDGETS





# TOTAL ESTIMATED SALARY COSTS

## Staff Summary

Total FTE: 37.4

Education Staff FTE: 21.2

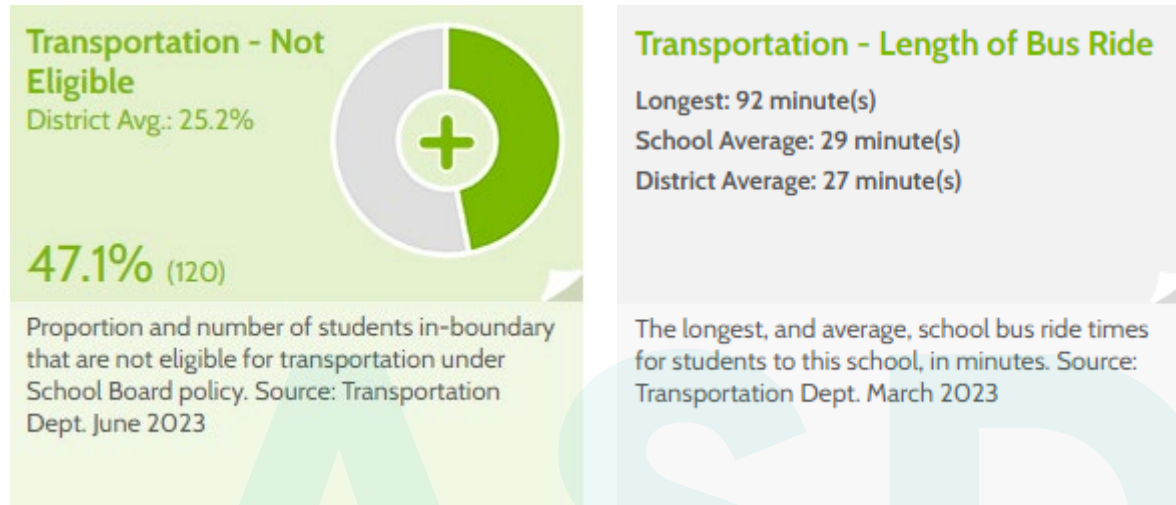
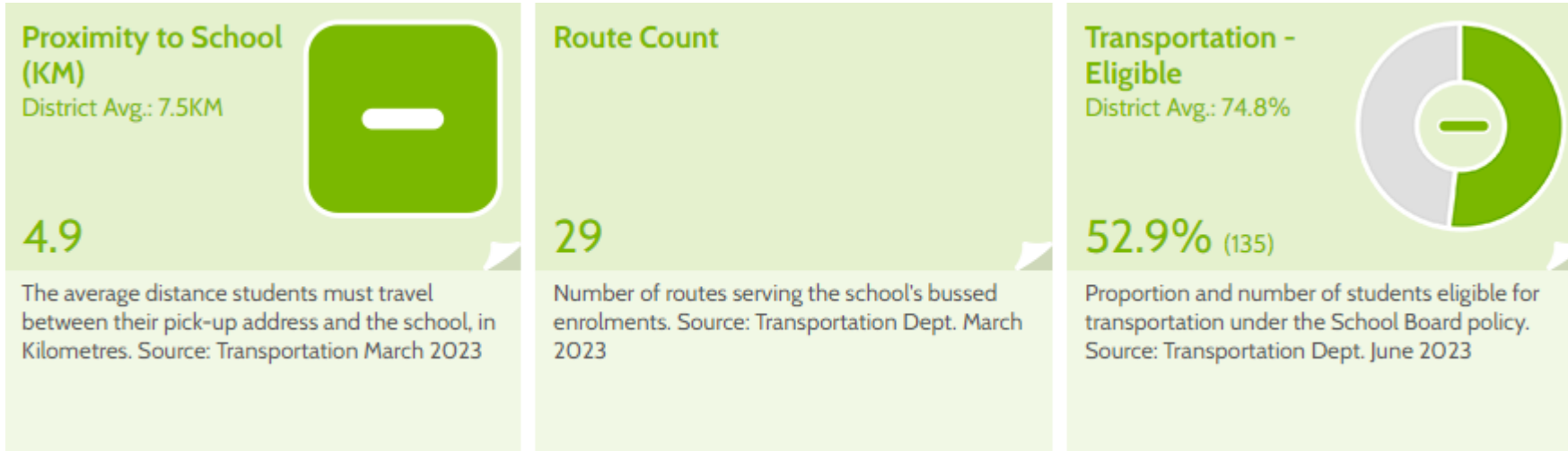
Support Staff FTE: 16.2

Total Estimated Salary Cost: \$2,408,893

FTE (Full Time Equivalent) and estimated salary cost of total staff at this school. Displaying breakdown of FTE into education (teachers) and support staff categories (support includes administrative, classroom support, custodian... etc.). Data as of April 2023.



# TRANSPORTATION





# IMPACT ON THE LOCAL COMMUNITY AND ECONOMIC DEVELOPMENT

- ❖ Turning over an aged infrastructure to GNB for future considerations (for example, continued government use, sale of the building for development, demolition and future use of land)
- ❖ Potential addition of a brand-new facility within the Town of Oromocto resulting in improved community space outside instructional hours
- ❖ Attraction of families to the community when considering moving/postings and wanting children to attend a new, modern school



# POSSIBLE CONSIDERATIONS INCLUDING IMPACT ON OTHER SCHOOLS:

FROM THE 2018 ERNST & YOUNG REPORT, THE FOLLOWING 5 SCENARIOS WERE PRESENTED:

- ❖ Close all schools within scope and replace them with a new 6-8 middle school and two K-5 elementary schools.
- ❖ Close all schools within scope and replace them with two new K-8 schools.
- ❖ Close all schools within scope and replace them with three new K-8 schools.
- ❖ Review the existing two middle schools compared to the EECD Planning Guidelines for Educational Facilities to determine what/if any space is deficient to the guidelines for a possible school addition and/or amalgamation in a mid-life upgrade scenario in conjunction with two new elementary schools.
- ❖ Close all schools within scope and replace them with a new K-2 Elementary, a new 3-5 school, and a new 6-8 school.



# OUR VISION FOR NEW SCHOOLS

- ❖ 2 Gymnasiums of 591 m<sup>2</sup> with change rooms and ancillary spaces
- ❖ 32 General instruction classrooms
- ❖ Guidance/visiting professionals' offices
- ❖ 4 Kindergarten classrooms
- ❖ Student government room
- ❖ 1 Early Childhood development room
- ❖ Library/media centre
- ❖ 2 Multi-function classrooms
- ❖ Cafeteria/kitchen/stage
- ❖ MSTE spaces
- ❖ Recycling room
- ❖ Science room
- ❖ Administration space
- ❖ Resource/special care classrooms
- ❖ Personnel centre with staff lounge
- ❖ Student/project work areas
- ❖ Play areas and playfield
- ❖ Music rooms
- ❖ Art room
- ❖ Performing arts/theatre classroom

\*Recent K-8 School Construction – capacity of 650 students



# QUESTIONS AND ANSWERS





# NEXT STEPS

- Public Meeting # 2 - to be held as series of subgroup meetings as follows:
  - Saturday Morning, March 16, 2024- Assiniboine Avenue Elementary School, Burton Elementary School, **Hubbard Elementary School (Venue)**.
  - Saturday Afternoon, March 16, 2024- Gesner Street Elementary School, **Summerhill Elementary School (Venue)**.
  - Saturday Morning, March 23, 2024- Morning session for presentations on Harold Peterson Middle School and **Ridgeview Middle School (Venue)**.
- Public Meeting # 3 – Evening of Thursday, May 9, 2024. A special District Education Council Meeting open to the public, where members will hold final conversations on the study, present a motion, and vote on the recommended conclusion.
- Government considers the recommendation and makes a decision
- For full detail and documentation of this study and its processes, please visit [www.asdw.nbed.ca](http://www.asdw.nbed.ca)



# THANK YOU

David McTimoney – Superintendent

Special Thanks to Paul MacIntosh, Shawn Tracey, Susan Young, School Principals, and their teams for the creation of this presentation.