



Florenceville Elementary School

PO Box 431, 8470 Main Street, Florenceville-Bristol, NB E7L 4J8

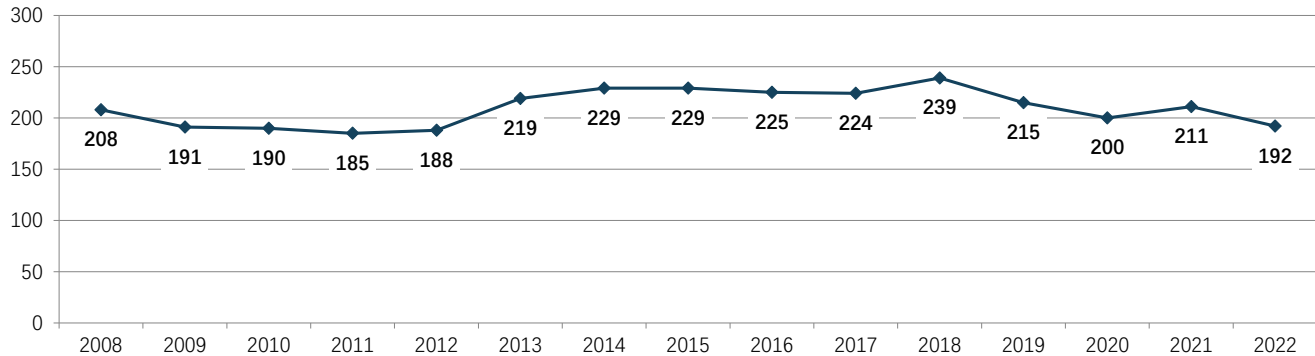
Phone: (506) 392-5109 Fax: (506) 392-5122

Grades: K-5

Built: 1966

Functional Capacity Data	Official Enrolment September 2022	Number of Classrooms	Capacity (Without Modulars)	Functional Capacity (Without Modulars)	Number of Modular Classrooms	Functional Capacity (With Modulars)
based on 24 students per class	192	12	288	66.7%	4	50.0%

School Enrollment Trends 2008 to Present



Physical Description :

- Built in 1966.
- Heating system is hot water boiler with propane gas.
- The school is a brick/concrete structure.
- It is a single-storey building and the school space is 2186 square meters including modular classrooms.
- Modular classrooms built and placed in 2001.
- There is no sprinkler system (automatic fire suppression system), fire prevention alarm system in the facility.
- Electrical entrance is 400 amps, 120/240 single phase and in good condition.
- Exterior lighting is H.I.D. (High Intensity Discharge). Interior lighting is LED.
- There are no ventilation units. HEPA (high efficiency particulate air) units in place since January 2022.
- The school operates the heating controls.
- There is no cafeteria.
- Playground has various apparatus, soccer field.
- Floors are tile and terrazzo.
- Ceilings in the hallways are suspended; classrooms are cedar.
- Painting is done according to a summer schedule.
- Interior doors are wood and not fire rated.
- Gymnasium floor is made of tile in good condition. Square footage is 3127square feet.
- There is wheelchair access to the stage.
- Corridor walls are masonry.
- Parking is paved and gravel.
- Water supply is a well with an ultra-violet system.
- Land ownership around the school is residential.
- There is room to expand, and the neighborhood is appropriate to maintain a school facility for years to come.
- There are no known environmental concerns.
- Exterior improvements in 2011, 2014.
- Site improvement in 206, 2017.
- Building envelopment in 2015.
- Lighting upgrades in 2018.
- Heating and ventilation upgrades in 2020.



Florenceville Elementary School

PO Box 431, 8470 Main Street, Florenceville-Bristol, NB E7L 4J8

Phone: (506) 392-5109 Fax: (506) 392-5122

Grades: K-5

Built: 1966

Operational Costs

Electricity	\$ 18,189.45
Water/Sewage	\$ 6,663.96
Garbage Removal	\$ 6,926.87
Snow Plowing	\$ 8,000.00
Heating Fuel	\$ 21,512.56
Natural Gas	\$ -
Cleaning Supplies/New Custodial Equipment	\$ 12,605.24
Minor Repairs/Renovations	\$ 24,273.67
Total	\$ 98,171.75

Operational Costs Per Square Meter \$ 44.91

Based on: 2186 Sq Meters

Operational Costs Per Student \$ 511.31

Based on: 192 Enrollment



Florenceville Elementary School

PO Box 431, 8470 Main Street, Florenceville-Bristol, NB E7L 4J8

Phone: (506) 392-5109 Fax: (506) 392-5122

Grades: K-5

Built: 1966

Feeder Schools

Students move to Florenceville Middle School for grades 6-8.

Catchment Area Boundaries

North to #9280 Route 105, #1360 Route 570, #770 East Coldstream Road and Route 110 with Hume Road and Hilltop Crescent added; West to #350 Dryer Road; East to include the East Coldstream Road; South to #3495 Route 103, #7416 Route 105, #10365 Route 130 and #110 Route 570.



Florenceville Elementary School

PO Box 431, 8470 Main Street, Florenceville-Bristol, NB E7L 4J8

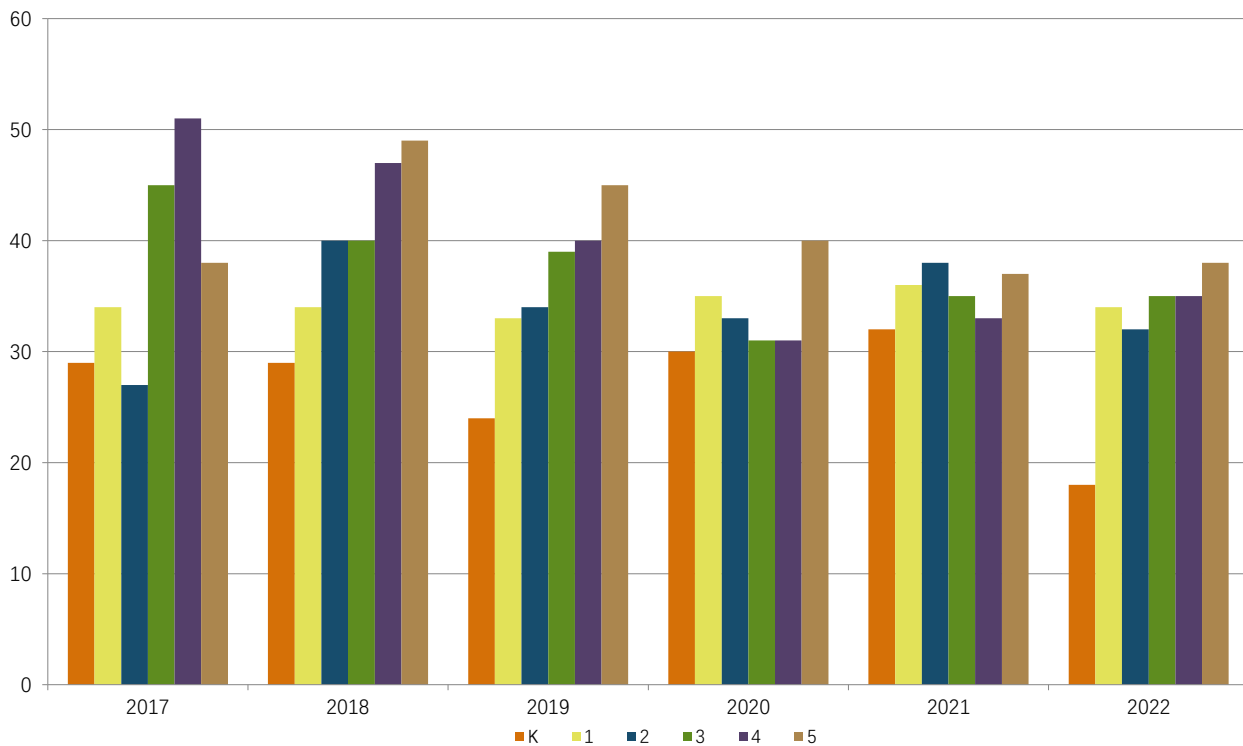
Phone: (506) 392-5109 Fax: (506) 392-5122

Grades: K-5

Built: 1966

Enrollment 2017 - 2022

Grade	2017	2018	2019	2020	2021	2022
K	29	29	24	30	32	18
1	34	34	33	35	36	34
2	27	40	34	33	38	32
3	45	40	39	31	35	35
4	51	47	40	31	33	35
5	38	49	45	40	37	38
Total	224	239	215	200	211	192





Florenceville Elementary School

PO Box 431, 8470 Main Street, Florenceville-Bristol, NB E7L 4J8

Phone: (506) 392-5109 Fax: (506) 392-5122

Grades: K-5

Built: 1966

Major Capital and Capital Improvements Projects 2000-2022

School Year	Project	Capital Improvements	Major Capital Improvements
2000-2001	Structural Modification	\$ 1,869	
2001-2002	Installation (Modular)	\$ 121,979	
2011-2012	Boiler	\$ 5,400	
2011-2012	Exterior Doors	\$ 29,900	
2014-2015	Exterior Window	\$ 4,067	
2015-2016	Building Envelope	\$ 246,919	
2016-2017	Site Improvement	\$ 1,620	
2017-2018	Site Improvement	\$ 48,983	
2018-2019	Lighting	\$ 100,021	
2020-2021	Boiler	\$ 2,492	
2020-2021	Heating and ventilation	\$ 97,036	
2020-2021	Site Access	\$ 3,369	
Total		\$ 663,655	\$ -