



**DISTRICT EDUCATION COUNCIL
Superintendent's Monitoring Report**

POLICY NAME	Closure of Schools		
POLICY NUMBER	ASD-W-EL7	Number of Reports per year	2
Date of Report	October 23, 2014 (moved from September 25, 2014, by approved motion)		
Date of Previous Report (s) This School Year	N/A		
Date of Future Report (s) This School Year	March 19, 2015		
Report Filed by:	David McTimoney, Superintendent		
Report Supported by:	Shawn Tracey, Director of Finance and Administration Philip Cliff, Facilities Manager		

REPORT:

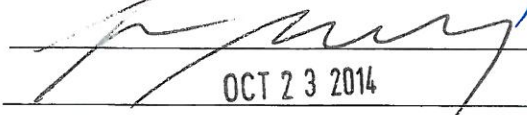
- **The policy calls for the District Education Council (DEC) to have steps in place if considering the closure of a school. The steps need to align with Provincial Policy 409 – Multi-year School Infrastructure Planning. There is a requirement to ensure that persons affected by a school closure are given sufficient notice and fully informed about the process, are provided with relevant documentation, have adequate time to consider the information as well as seek advice and consult with others (should they wish) and have adequate time to prepare a presentation for DEC, being heard impartially.**
- **The policy outlines a series of steps, with timelines, regarding the process of studying the sustainability of a school.**
- **The Superintendent has created a document that outlines an operational process for studying the sustainability of a school, in accordance with Policy 409, Section 6.4. The Superintendent has shared this document (Appendix A) with DEC while in a working session, explaining the process in detail.**
- **Step 1 of the policy has been completed via the use of our electronic Infrastructure Plan stored on the DEC Portal. Councilors have access to electronic information about each of our 75 schools.**

POLICY NAME**Closure of Schools**

- **Steps 2 through 4 are complete and on-going. The culmination of the October 23, 2014 meeting will take the Council to the end of Step 4. Working sessions were held in August, September and October (Appendix D).**
- **The remaining steps would be followed should the Council pass a motion to study the sustainability of one or more schools within ASD-W.**
- **The remaining steps would be organized in a detailed timeline and plan, should the Council pass a motion to study the sustainability of one or more schools within ASD-W.**
- **The Superintendent recommends the DEC study the sustainability of Bath Middle School. Rationale for this recommendation is provided in Appendix B.**
- **The Superintendent recommends the DEC study the sustainability of Coles Island School. Rationale for this recommendation is provided in Appendix B.**
- **The Superintendent recommends the DEC study the sustainability of Stanley Elementary School/Stanley High School. Rationale for this recommendation is provided in Appendix B.**
- **The Superintendent, with staff, will continue to monitor demographics and relevant information for long term considerations of sustainability studies in the next 2-5 years.**

Appendices:

- **A – Provincial Policy 409, Section 6.4 – Summary of Steps**
- **B – ASD-W Sustainability Study Rational Document – 2014-15**
- **C – Facilities Infrastructure Planning Presentation – 2014 (from ASD-W-EL6)**
- **D – Presentation to DEC in August Working Session**

Superintendent's Signature: _____**DEC Chair Signature:** _____**Date:** _____

OCT 23 2014

Anglophone West School District
Provincial Policy 409 – Multi-year School Infrastructure Planning

Section 6.4 – Determining a School’s Sustainability

1. The district staff will maintain a database and system to keep data pertinent to making informed decisions about schools. We keep this data on the DEC Portal and it is updated annually.
2. DEC’s review this information regularly so that they can be informed about their schools and the schools within the district.
3. DEC Policy ASD-W-EL6 and DEC Policy ASD-W-EL7 are applicable here. I will report on these, to DEC and formally, in September and March.
4. Steps to a Sustainability Study
 - a. Superintendent briefs the DEC in a working session about some of the trends and patterns within the district with respect to enrollment, functional capacity, building specifications and other applicable items.
 - b. Superintendent reports to DEC formally through DEC Policies ASD-W-EL6 and 7. Superintendent will make a recommendation on whether there should be any sustainability studies.
 - c. DEC entertains one or more motions regarding whether to launch a sustainability study.
5. If there is an approved motion to conduct a sustainability study
 - a. The DEC/Superintendent will advise the Minister of the intent to conduct a sustainability study
 - b. The superintendent, as a courtesy, will connect with the principals to explain the process
 - c. A timeline will be created for the study and share with stakeholders; this timeline will be prefaced with an explanation letter from the DEC Chair or Superintendent
 - d. A district team will be put together to organize information and plan for the roll out of the study – the following topics will be included:
 - i. Impact on enrolments
 - ii. Health and safety of the building and grounds
 - iii. Quality of educational programs and services
 - iv. Transportation services
 - v. Financial considerations
 - vi. Impact on the local community
 - vii. Impact on other schools
 - viii. Consideration of future economic development in the area

- e. District information on the situation will be made available publically and to interested stakeholders
- f. Three public meetings will ensue. These shall be attended by the DEC members:
 - i. The first meeting will be to inform the school community of the DEC's intention and the steps to be followed; information should be presented at this time
 - ii. The second meeting will be an opportunity for any stakeholder to make a public presentation
 - iii. The third meeting will be to provide the public with the results of the consultation, including an account of the factors considered. This may be at the public meeting of DEC where they will vote on a motion regarding the direction be shown by the sustainability study
- 6. The DEC will inform the Minister, in writing, of a recommendation to close a school. The DEC has the authority to make a recommendation and not the actual authority to close the school.
- 7. The Minister will review the recommendation for procedural fairness and make a ruling. This will occur in a time frame of no less than 30 days but no more than 60 days.
- 8. If a school is approved to be closed, then the DEC/District will inform the parents formally and describe the plans for relocation. This needs to occur in sufficient time to allow for any orientation activities in preparation for the next school year. The District will need to organize itself in preparation for this move, as per situation.
- 9. The DEC will deem the building to be in surplus.

**Sustainability Study Rationale Document
Anglophone West School District
September, 2014**

This document is created to help organize thoughts, present rationale and lead to a data-informed, responsible recommendation by the Superintendent to the District Education Council.

Enrollment

In considering the September 30, 2013 enrollment numbers, there are nine schools that have 100 or less students enrolled in the school:

- Woodstock Education Center
 - Bath Middle School (41)
 - Debec Elementary School (47)
 - Millville Elementary School (44)

- Oromocto Education Center
 - Burton Elementary School (48)
 - Coles Island School (28)
 - Gagetown School (88)

- Fredericton Education Center
 - Doaktown Elementary School (74)
 - McAdam Avenue Elementary School (78)
 - McAdam Elementary School (71)

Within these 9 schools, only five of them are projecting an increase for September 30, 2014 – four of them projecting an increase of only 2-5 students and one (Burton Elementary) projecting an increase of 12 students.

Debec Elementary School will close in January, 2015, with students moving to the new Meduxnekeag Consolidated School.

From within the remaining eight schools, the functional capacity ratings are as follows:

- Bath Middle School – 20.92%
- Millville Elementary School – 45.83%
- Burton Elementary School – 76.19%
- Coles Island School – 19.44%
- Gagetown School – 30.77%
- Doaktown Elementary School – 34.26%
- McAdam Avenue Elementary School – 46.43%
- McAdam Elementary School – 29.58%

Seven of these eight schools are among the 11 that fall less than 40% for a functional capacity rating. Two are less than 25%...Bath Middle School and Coles Island School.

Classes

This year, the number of homerooms at each of these schools is:

- Bath Middle School – 2 classes (6-7, 7-8)
- Millville Elementary School – 3 classes (K-2, 2-3, 4-5)
- Burton Elementary School – 4 classes (K team, 1, 2)
- Coles Island School – 3 classes (K-1, 2-3, 4-5)
- Gagetown School – 6 classes (K-1, 1-2, 2-3, 4-5, 6, 7-8)
- Doaktown Elementary School – 5 classes (K, 1-2 team, 3, 4-5)
- McAdam Avenue Elementary School – 5 classes (K, 1, 2, 3-4, 4-5)
- McAdam Elementary School – 5 classes (K-1, 1-2, 2-3, 4, 5)

Costs

The “cost per student” and “cost per square meter” for each school (comparing enrollment and size with facility costs), are as follows:

- Bath Middle School – \$2,221.71 and \$23.76
- Millville Elementary School – \$870.00 and \$35.84
- Burton Elementary School – \$475.90 and \$28.17
- Coles Island School – \$1,815.48 and \$37.57
- Gagetown School – \$931.73 and \$42.07
- Doaktown Elementary School – \$1,692.71 and \$28.50
- McAdam Avenue Elementary School – \$404.18 and \$21.88
- McAdam Elementary School – \$823.80 and \$27.88

The mean “cost per student” is \$548.48 and the median is \$452.23. The mean “cost per square meter” is \$28.01 and the median is \$27.86.

Recommendation

From this information, Bath Middle School and Coles Island School stand out as two schools that could be looked at more closely through a sustainability study.

Bath Middle School is located next door to Bath Elementary School and is within 15 minutes of Florenceville Middle School.

Students who attend Coles Island School are scattered in rural communities that approach catchment areas for Cambridge-Narrows School, Chipman Elementary School and the ASD-E and ASD-S borders.

Unique Circumstance

Stanley Elementary School and Stanley High School operate as two schools within one facility. They have separate principals, staffs, budgets and school numbers. They were separate schools, physically, until 1992, when a major renovation occurred that saw the two buildings become attached. The time seems right to study the sustainability of keeping these two schools operating as such or combining them together as one, K-12 school. We currently have five K-12 schools in our district. As such, this is the third recommendation presented to DEC.

FACILITIES INFRASTRUCTURE PLANNING 2014

Anglophone West School District

Introduction

The Anglophone West School District is committed to providing the greatest possible educational experience for all students in Anglophone West schools. To this end, it is necessary to have well maintained school facilities that reflect an environment conducive to learning and teaching. This infrastructure plan takes into consideration building demographics, enrolments, functional (occupant) capacities, annual operating costs, historical and projected capital improvements, special features of individual schools, and a multitude of other factors.

This report supplemented with the Capital Improvement Project list and the school by school files will provide Council with an overview of the state of school facilities; provide information regarding space utilization and comparative school data.

Education Act

Establishment of Schools

2(1) A District Education Council may, with the approval of the Minister and for the purpose of providing Public Education, establish schools within the school district for which the District Education Council is Established.

2(2) All schools established under this section are to be non-sectarian.

Operation of Schools

3(1) A District Education Council shall, in accordance with this Act and through the superintendent of the school district, operate all schools established by the District Education Council under subsection 2(1)

Schools & Year of Construction Elementary School

Andover Elementary (1956)	Kingsclear Consolidated School (1950)
Assiniboine Avenue Elementary (1957)	Lincoln Elementary Community School (2013)
Barkers Point School (1946/2003)	Liverpool Street School (1968)
Bath Elementary (1967)	McAdam Avenue School (1962)
Bristol Elementary (1966)	McAdam Elementary (1945)
Burton Elementary (1961)	Millville Elementary (1949)
Chipman Elementary (1967)	Montgomery Street School (1963)
Coles Island School (1957)	Nackawic Elementary (1967/1987)
Connaught Street School (1957)	Nashwaak Valley School (1955/2001)
Debec Elementary (1952)	Nashwaaksis Memorial School (1948)
Daaktown Elementary (1953/2011)	New Maryland Elementary (1994)
Donald Fraser Memorial School (1949)	Park Street School (1960)
Florenceville Elementary (1966)	Priestman Street School (1969)
Forest Hill Elementary (1955)	Royal Road School (1982)
Garden Creek School (1965)	Southern Carleton Elementary (1961)
Geary Elementary Community School (1955)	Stanley Elementary (1964/1992)
Gesner Street Elementary (1959)	Summerhill Street Elementary (1959)
Gibson-Neill Memorial Elementary (2012)	Upper Mirimichi Elementary (1965)
Harvey Elementary (1966)	Woodstock Centennial Elementary (1968)
Hubbard Avenue Elementary (1957)	

Schools & Year of Construction Middle School

- | | |
|---|--|
| 1. Bath Middle (1954) | 10. Keswick Valley Memorial(1951/1986) |
| 2. Bliss Carman Middle (2009) | |
| 3. Centreville Community School (1952/2003) | 11. Minto Elementary/Middle (1980) |
| 4. Devon Middle (1952) | 12. Nackawic Middle (1971) |
| 5. Florenceville Middle (1955) | 13. Nashwaaksis Middle (1976) |
| 6. George Street Middle (1924) | 14. Perth-Andover Middle (2004) |
| 7. Harold Peterson Middle (1958) | 15. Ridgeview Middle (1958) |
| 8. Gagetown School (1960) | 16. Sunbury West School (1948) |
| 9. Keswick Ridge School (1952) | 17. Woodstock Middle (1953/1998) |

School & Year of Construction High School And K-12

- | | |
|--|--|
| 1. Cambridge-Narrows Community School (1987) | 12. Minto Memorial School (1949) |
| 2. Canterbury High (1952/2002) | 13. Nackawic High School (1967/1997) |
| 3. Carleton North High (1977) | 14. Oromocto High (1965) |
| 4. Central New Brunswick Academy (2010) | 15. Saint Mary's Academy (1990) |
| 5. Chipman Forest Avenue School (1988) | 16. Southern Victoria High (1953 with several additions) |
| 6. Fredericton High (1969) | 17. Stanley Regional High (1948/1992) |
| 7. Hartland Community School (2007) | 18. Tobique Valley High (1947/1972) |
| 8. Harvey High (1980) | 19. Woodstock High (1977) |
| 9. John Caldwell School (1951/1991) | |
| 10. Leo Hayes School (1999) | |
| 11. McAdam High (1924) | |

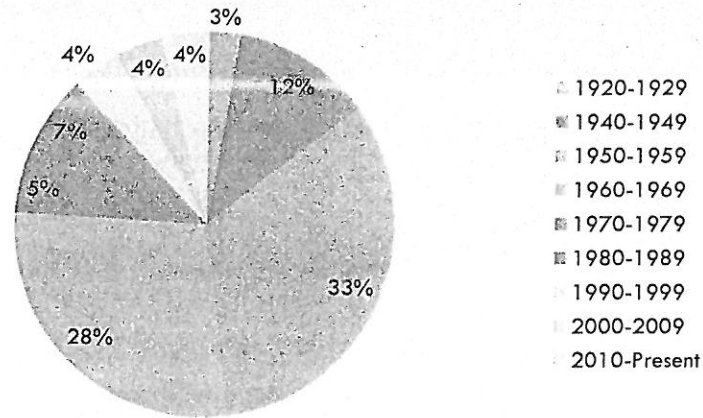
School Buildings by Age and Level

Built	K-1	K-2	K-5	K-8	2-5	3-5	6-8	6-12	9-12	K-12	Total	% Age
1920-1929							1	1			2	2.7%
1930-1939											0	0.0%
1940-1949			5	1				2	1		9	12.0%
1950-1959	1	2	8	3		2	6		1	2	25	33.3%
1960-1969			16	1	1				3		21	28.0%
1970-1979							2		2		4	5.3%
1980-1989			1	1				2		1	5	6.7%
1990-1999			1						1	1	3	4.0%
2000-2009							2			1	3	4.0%
2010-Present			2					1			3	4.0%
Total	1	2	33	6	1	2	11	6	8	5	75	100.0%

Building Age – Facility Square Footage

The 75 schools in the Anglophone West School District encompass 389,246 square meters of space. The graph on the next page provides a snapshot of the percentage of space in relationship to the age of the building. A large percentage (56%) of the schools in the district were constructed more than 50 years ago.

Building Age – Facility Square Meters



Functional Capacity

Functional Capacity provides data regarding the usage of classrooms within our schools. It is based on all spaces in a school that could be used for "homerooms." In order to determine "functional capacity," rooms are assigned maximum size based on grade level. Resource rooms, libraries, gymnasiums, pools, theatres, cafeterias, industrial and home economics facilities are not included. Functional Capacity is relevant in that it allows comparison of space utilization on a school by school basis.

The "rating" system for each school is an expression of the percentage of the space occupied when comparing the student population to the capacity of the building.

Ratings: Greater than 80% - Full Capacity

60% to 80% - Optimum

Less than 60% - Under Utilized

Functional Capacity Elementary School

School	Functional Capacity	School	Functional Capacity
Priestman Street Elementary	101.14%	New Maryland Elementary	70.24%
Lincoln Elementary Community	97.00%	Upper Miramichi Elementary	69.64%
Royal Road	95.60%	Bristol Elementary	67.19%
Southern Carleton Elementary	93.14%	Connaught Street	66.67%
Kingsclear Consolidated	92.50%	Nackawic Elementary	64.74%
Florenceville Elementary	91.25%	Hubbard Avenue Elementary	62.50%
Gibson-Neill Memorial	90.54%	Bath Elementary	58.33%
Liverpool Street	89.94%	Summerhill Street Elementary	54.24%
Nashwaak Valley	85.42%	Andover Elementary	53.17%
Nashwaaksis Memorial	85.23%	Gesner Street Elementary	52.78%
Forest Hill	83.67%	McAdam Avenue	46.43%
Park Street	83.53%	Millville Elementary	45.83%
Montgomery Street	81.82%	Donald Fraser Memorial	40.48%
Geary Elementary Community	79.63%	Chipman Elementary	38.54%
Barkers Point	79.17%	Doaktown Elementary	34.26%
Woodstock Centennial Elementary	76.89%	Debec Elementary	32.64%
Burton Elementary	76.19%	McAdam Elementary	29.58%
Assiniboine Avenue Elementary	74.40%	Coles Island	19.44%
Harvey Elementary	73.86%		
Garden Creek	72.14%		

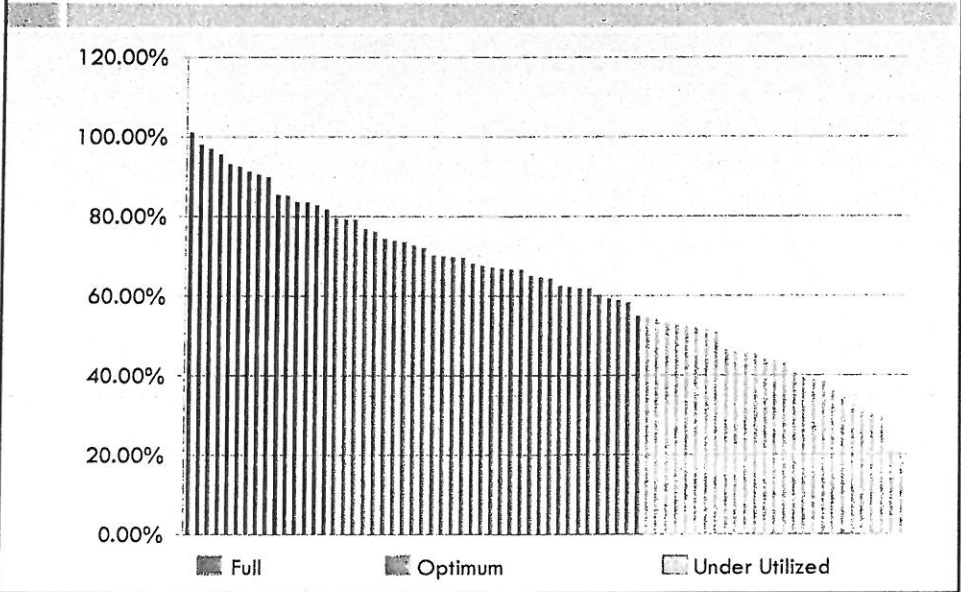
Functional Capacity Middle School

School	Functional Capacity
Bliss Carman Middle	82.83%
Devon Middle	72.77%
Woodstock Middle	69.82%
George Street Middle	68.17%
Nashwaaksis Middle	67.63%
Keswick Valley Memorial	65.13%
Centerville Community	64.42%
Keswick Ridge	61.97%
Ridgeview Middle	59.35%
Perth-Andover Middle	58.93%
Harold Peterson Middle	54.93%
Minto Elementary/ Middle	51.92%
Sunbury West	44.04%
Florenceville Middle	43.07%
Gagetown	30.77%
Nackawic Middle	30.36%
Bath Middle	20.92%

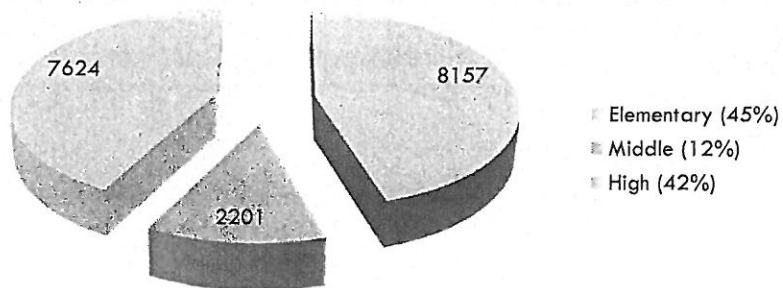
Functional Capacity High School And K-12

School	Functional Capacity
Leo Hayes High	98.02%
Hartland Community	79.36%
Carleton North High	73.54%
Fredericton High	69.96%
Woodstock High	66.88%
Oromocto High	66.76%
John Caldwell	62.31%
Canterbury High	61.83%
Harvey High	60.27%
Southern Victoria High	54.55%
Saint Mary's Academy	52.37%
Stanley Complex	51.60%
Cambridge-Narrows	51.05%
Central NB Academy	45.54%
Nackawic Senior High	45.36%
McAdam High	43.65%
Minto Memorial High	39.66%
Tobique Valley High	38.93%
Chipman Forest Ave	36.07%

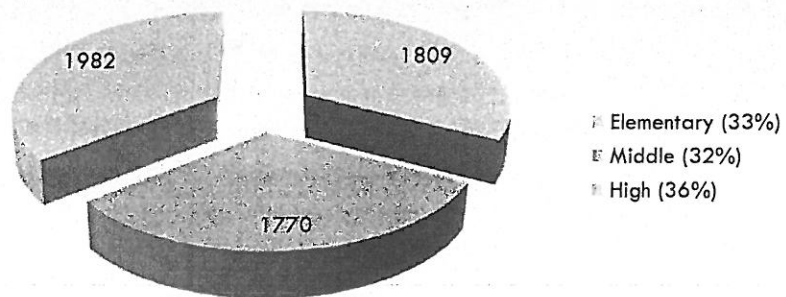
Functional Capacity Overview

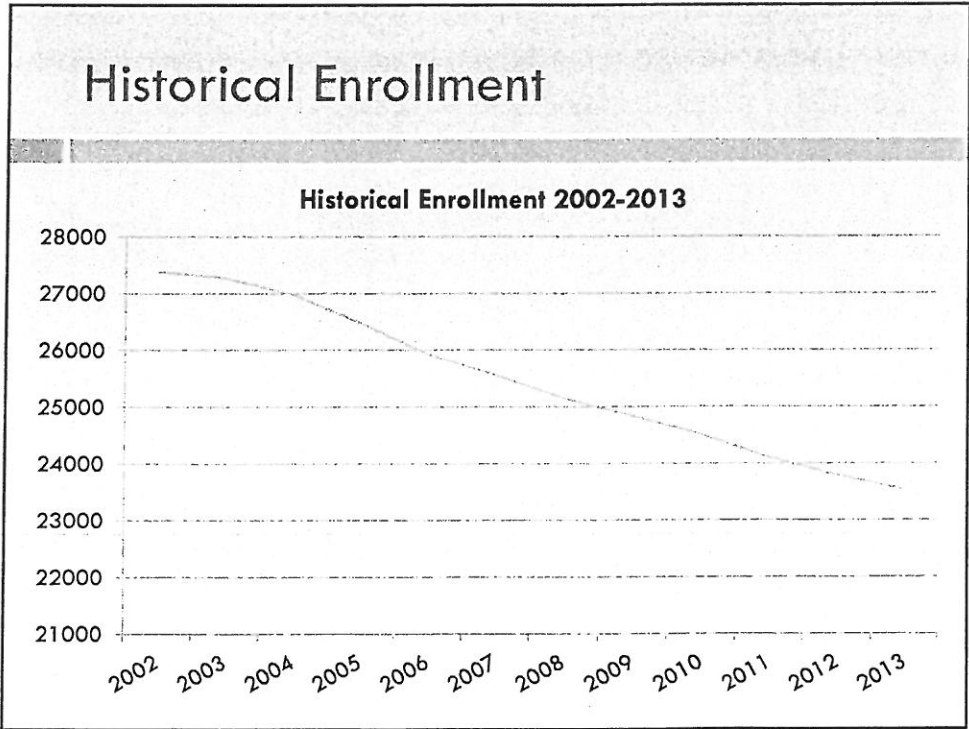
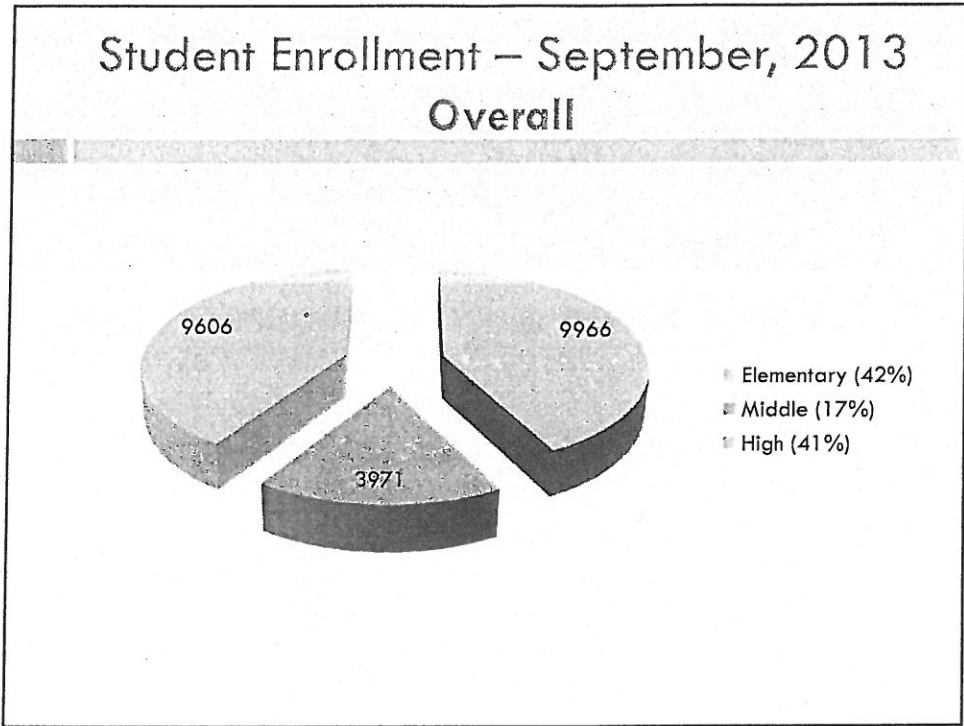


Student Enrollment – September, 2013 English



Student Enrollment – September, 2013 French





Utilities Expenditures – Cost Per Square Meter For the 12 month period ending March 31, 2014

Elementary School

School	Cost Per Square Meter	Square Meters	Total	Electricity	Fuel	Natural Gas	Snow	Water/ Sewage	Garbage Removal	Cleaning Supplies/Services	Minor Repair
Andover Elementary	\$38.33	4901	\$187,840.60	\$77,298.07	\$47,701.74		\$11,500.00	\$17,225.00	\$2,752.00	\$5,379.65	\$25,984.14
Assiniboine Avenue Elementary	\$20.29	3068	\$62,260.53	\$13,893.24		\$29,516.50	\$6,687.80	\$2,687.80	\$1,781.26	\$1,890.37	\$5,803.56
Barkers Point	\$24.97	3590	\$89,640.34	\$46,195.68	\$8,033.72		\$4,754.15	\$1,749.76	\$3,735.67	\$6,934.60	\$18,236.76
Bath Elementary	\$33.08	1870	\$61,866.55	\$12,300.48	\$27,678.44			\$7,040.48	\$2,040.00	\$2,642.79	\$10,264.36
Bistol Elementary	\$29.24	1427	\$41,722.49	\$8,071.14	\$16,548.86		\$2,100.00	\$3,378.69	\$2,200.00	\$2,095.91	\$7,327.89
Burton Elementary	\$28.17	811	\$22,843.22	\$4,430.72	\$12,493.11		\$2,400.00	\$0.00	\$342.00	\$238.69	\$2,938.70
Chipman Elementary	\$28.06	2230	\$62,594.59	\$8,726.47	\$28,762.11		\$8,325.02	\$2,944.75	\$2,764.91	\$1,778.98	\$9,282.34
Coles Island	\$37.57	1353	\$50,833.30	\$30,137.99			\$5,951.88	\$0.00	\$1,911.85	\$368.79	\$12,472.79
Connaught Street	\$28.47	1902	\$54,159.19	\$12,723.47		\$22,764.18	\$3,068.88	\$1,770.08	\$2,971.06	\$4,548.39	\$6,313.13
Debec Elementary	\$30.68	1223	\$37,526.48	\$10,410.20	\$14,892.33		\$5,480.00	\$0.00	\$3,500.00	\$1,730.70	\$1,513.25
Doaktown Elementary	\$28.50	4395	\$125,260.50	\$32,257.81	\$60,303.30		\$10,000.02	\$15,306.65	\$2,370.66	\$2,583.20	\$2,438.86
Donald Fraser Memorial	\$29.84	3219	\$96,045.92	\$56,442.41			\$13,225.00	\$6,058.65	\$2,752.00	\$2,414.72	\$13,153.14
Florenceville Elementary	\$45.15	1847	\$83,394.23	\$41,027.12	\$26,347.61		\$845.00	\$5,830.96	\$2,100.00	\$3,692.46	\$3,551.08
Forest Hill	\$32.72	1119	\$36,614.85	\$6,520.28		\$14,127.79	\$4,099.98	\$1,468.53	\$1,343.53	\$1,605.76	\$7,448.98
Garden Creek	\$30.75	2630	\$80,861.27	\$52,196.87			\$4,366.65	\$2,803.95	\$3,025.67	\$3,926.36	\$14,541.77
Geary Elementary Community	\$13.74	1915	\$26,313.44	\$3,792.85	\$2,043.95		\$11,350.00	\$0.00	\$1,225.50	\$894.62	\$7,006.52
Gesner Street Elementary	\$23.84	3668	\$87,423.73	\$25,611.30		\$23,567.62	\$7,041.65	\$7,183.51	\$1,895.25	\$1,784.90	\$20,339.50
Gibson-Neill Memorial	\$19.46	7318	\$142,386.05	\$53,362.69		\$38,134.66	\$8,833.35	\$3,313.18	\$6,171.50	\$12,597.33	\$19,973.34

Utilities Expenditures – Cost Per Square Meter For the 12 month period ending March 31, 2014

Elementary School continued.

School	Cost Per Square Meter	Square Meters	Total	Electricity	Fuel	Natural Gas	Snow	Water/ Sewage	Garbage Removal	Cleaning Supplies/Services	Minor Repair
Harvey Elementary	\$39.92	1958	\$78,156.16	\$40,894.52			\$3,475.02	\$5,245.49	\$4,508.21	\$3,020.11	\$21,012.81
Hubbard Avenue Elementary	\$25.98	4039	\$104,943.67	\$22,191.98		\$40,245.00	\$6,582.20	\$12,978.86	\$2,012.99	\$2,684.09	\$18,248.55
Kingsclear Consolidated	\$29.87	1332	\$39,781.69	\$6,283.78	\$15,641.49		\$3,626.88	\$293.53	\$1,212.45	\$4,750.97	\$7,972.59
Lincoln Elementary Community	\$14.94	3722	\$55,613.77	\$18,623.78		\$20,144.86	\$4,750.00	\$0.00	\$1,382.25	\$3,574.49	\$7,138.39
Liverpool Street	\$31.29	2434	\$76,170.91	\$47,515.59			\$4,566.68	\$5,002.87	\$3,320.59	\$7,399.88	\$8,365.30
McAdam Avenue	\$21.88	1441	\$31,525.76	\$6,349.02		\$13,728.05	\$3,254.04	\$642.66	\$861.99	\$1,470.08	\$5,230.02
McAdam Elementary	\$27.88	2098	\$58,489.89	\$35,666.06			\$5,766.58	\$6,570.09	\$1,641.45	\$1,333.97	\$7,511.64
Milville Elementary	\$35.84	1068	\$38,280.03	\$5,091.58	\$14,803.85		\$9,000.00	\$0.00	\$3,400.00	\$1,410.05	\$4,574.55
Montgomery Street	\$24.83	1809	\$44,921.69	\$12,310.54		\$15,456.87	\$3,254.88	\$2,095.62	\$2,359.37	\$5,136.67	\$4,308.74
Nackawic Elementary	\$24.26	3394	\$82,334.65	\$53,209.70			\$8,990.00	\$12,621.78	\$2,500.00	\$3,337.70	\$1,675.47
Nashwaak Valley	\$36.22	2059	\$74,587.55	\$38,363.96			\$18,833.32	\$0.00	\$1,343.53	\$2,181.86	\$12,854.88
Nashwaaksis Memorial	\$28.02	2910	\$81,542.79	\$43,463.33			\$3,254.10	\$2,031.60	\$2,457.68	\$4,631.41	\$25,704.67
New Maryland	\$25.82	6370	\$164,443.70	\$116,331.12			\$12,499.98	\$4,592.70	\$5,155.66	\$8,100.84	\$17,763.60
Park Street	\$26.01	4135	\$107,567.23	\$35,018.46		\$30,240.85	\$8,183.88	\$2,812.91	\$4,598.58	\$5,371.10	\$21,341.45
Priestman Street Elementary	\$28.96	4403	\$127,504.63	\$78,083.44			\$6,000.00	\$8,297.45	\$5,832.88	\$7,880.74	\$21,410.12
Royal Road	\$24.59	4295	\$105,597.36	\$73,009.27			\$9,671.88	\$4,788.79	\$4,511.20	\$3,075.62	\$10,540.62
Southern Carleton Elementary	\$25.31	4617	\$116,862.90	\$30,630.65	\$57,523.77		\$5,995.00	\$0.00	\$3,780.00	\$4,301.04	\$14,632.44
Summerhill Street Elementary	\$21.81	3268	\$71,262.83	\$22,935.28		\$18,531.53	\$6,657.20	\$2,420.32	\$1,731.38	\$3,163.38	\$15,823.74
Upper Miramichi Elementary	\$27.74	2167	\$60,105.70	\$11,891.60	\$31,968.41		\$5,500.02	\$0.00	\$3,748.21	\$2,738.67	\$4,258.79
Woodstock Centennial Elementary	\$31.36	3474	\$108,933.63	\$63,115.53			\$5,795.00	\$9,098.51	\$4,100.00	\$6,555.36	\$20,269.23

Utilities Expenditures – Cost Per Square Meter For the 12 month period ending March 31, 2014

Middle School

School	Cost Per Square Meter	Square Meters	Total	Electricity	Fuel	Natural Gas	Snow	Water/ Sewage	Garbage Removal	Cleaning Supplies/Services	Minor Repair
Bath Middle	\$23.76	3834	\$91,030.06	\$17,905.59	\$38,682.72		\$3,680.00	\$9,415.48	\$2,340.00	\$2,405.73	\$16,660.54
Bliss Carman Middle	\$19.56	7284	\$142,451.99	\$63,884.53		\$33,857.93	\$8,500.02	\$3,062.29	\$6,586.57	\$9,889.71	\$16,679.94
Centerville Community	\$26.47	4820	\$127,571.66	\$84,528.18			\$8,000.00	\$7,262.38	\$3,500.00	\$2,056.41	\$22,234.69
Devon Middle	\$26.15	5865	\$153,343.94	\$80,645.95		\$28,412.83	\$4,500.00	\$5,761.69	\$5,311.35	\$13,072.67	\$15,609.45
Florenceville Middle	\$30.55	3948	\$120,620.22	\$17,369.49	\$67,673.14		\$1,100.00	\$7,002.60	\$4,140.00	\$4,241.44	\$19,093.56
Gagetown School	\$42.07	1849	\$81,992.40	\$14,602.94	\$28,956.77		\$7,900.02	\$3,000.00	\$627.00	\$1,732.15	\$25,173.52
George Street Middle	\$22.22	8272	\$183,839.99	\$135,792.11			\$9,578.88	\$4,371.76	\$7,089.03	\$14,965.78	\$12,042.43
Harold Peterson Middle	\$21.76	5508	\$119,881.94	\$28,736.62		\$49,473.81	\$7,393.35	\$13,812.51	\$1,895.25	\$1,310.83	\$17,259.57
Keswick Ridge	\$22.43	2219	\$49,778.27	\$12,813.21	\$19,956.29		\$5,899.98	\$0.00	\$1,583.84	\$2,958.21	\$6,566.74
Keswick Valley Memorial	\$14.23	6400	\$91,043.32	\$70,102.35			\$4,500.00	\$402.96	\$4,416.01	\$2,839.07	\$8,782.93
Minto Elementary/ Middle	\$19.69	7612	\$149,867.19	\$93,748.31			\$10,809.96	\$8,049.01	\$8,069.22	\$5,863.27	\$23,327.42
Nackawic Middle	\$16.92	5913	\$100,025.66	\$74,641.82				\$9,376.17	\$2,940.00	\$2,342.11	\$10,725.56
Nashwaaksis Middle	\$35.22	12771	\$449,821.67	\$400,843.10			\$2,959.13	\$4,301.06	\$6,411.80	\$3,719.50	\$31,587.08
Perth-Andover Middle	\$21.69	4303	\$93,324.51	\$44,982.31			\$24,500.00	\$11,925.00	\$2,752.00	\$2,904.84	\$6,260.36
Ridgeview Middle	\$21.63	5506	\$119,120.79	\$30,370.52		\$53,169.70	\$7,416.65	\$3,808.04	\$2,486.63	\$1,441.77	\$20,437.48
Sunbury West	\$22.38	5875	\$131,457.57	\$96,465.75			\$9,187.32	\$13,200.00	\$1,531.63	\$1,722.60	\$9,250.27
Woodstock Middle	\$41.48	4518	\$187,397.10	\$39,700.98	\$99,632.04		\$5,650.00	\$9,790.56	\$5,100.00	\$5,874.20	\$21,649.32

Utilities Expenditures – Cost Per Square Meter For the 12 month period ending March 31, 2014

High School and K-12

School	Cost Per Square Meter	Square Meters	Total	Electricity	Fuel	Natural Gas	Snow	Water/ Sewage	Garbage Removal	Cleaning Supplies/Services	Minor Repair	
Cambridge-Narrows	\$29.98	3606	\$108,118.71	\$62,648.86			\$8,670.00	\$211.00	\$9,968.15	\$3,859.22	\$22,761.48	
Canterbury High	\$38.50	3826	\$147,316.13	\$56,890.44	\$59,074.29		\$6,500.00	\$0.00	\$4,200.00	\$4,187.88	\$16,463.52	
Carleton North High	\$36.75	11493	\$422,346.64	\$219,199.75			\$6,100.00	\$19,092.34	\$6,200.00	\$149,998.20	\$22,756.35	
Central NB Academy	\$32.25	5797	\$186,930.72	\$56,271.40	\$68,235.82		\$30,000.00	\$0.00	\$8,585.65	\$6,171.99	\$17,665.86	
Chipman Forest Ave	\$19.98	7108	\$142,044.36	\$104,785.01			\$10,907.50	\$4,712.00	\$5,030.91	\$8,025.13	\$8,583.81	
Fredericton High	\$17.12	33432	\$572,337.55	\$433,443.40	\$62.89		\$19,480.02	\$0.00	\$20,753.80	\$23,047.57	\$75,549.87	
Hatfield Community	\$34.66	8840	\$306,397.54	\$219,956.20			\$16,376.00	\$23,911.25	\$7,000.00	\$8,500.72	\$30,574.37	
Harvey High	\$27.99	5287	\$147,965.51	\$101,928.49			\$12,550.02	\$6,888.97	\$6,242.13	\$7,642.38	\$12,713.52	
John Caldwell	\$24.04	8305	\$199,686.95	\$143,538.53			\$16,990.00	\$6,023.30	\$5,504.00	\$3,365.87	\$24,265.25	
Leo Hayes High	\$52.14	16294	\$849,505.73	\$357,569.97			\$17,775.40	\$15,188.46	\$8,160.00	\$412,717.39	\$38,094.51	
McAdam High	\$23.35	4424	\$103,321.55	\$74,370.75			\$7,866.68	\$3,056.40	\$2,543.09	\$4,032.62	\$11,452.01	
Minto Memorial High	\$27.84	5672	\$157,916.16	\$113,371.79			\$9,722.00	\$6,371.79	\$5,254.96	\$2,613.26	\$20,582.36	
Nackawic Senior High	\$25.01	6697	\$167,495.01	\$117,363.51			\$19,667.00	\$14,064.23	\$4,100.00	\$3,376.68	\$8,923.59	
Oromocto High	\$19.62	19638	\$385,264.34	\$134,728.30		\$130,130.00	\$13,171.15	\$6,311.88	\$8,257.88	\$9,109.65	\$33,555.48	
Saint Mary's Academy	\$48.32	3843	\$185,697.19	\$70,469.05			\$12,500.00	\$9,992.06	\$1,560.00	\$84,760.93	\$6,415.15	
Southern Victoria High	\$35.28	8862	\$312,689.32	\$95,868.59	\$120,542.84		\$15,250.00	\$18,550.01	\$5,504.00	\$2,665.68	\$54,308.20	
Tobique Valley High	\$28.75	7249	\$208,388.15	\$65,484.43	\$84,697.86		\$13,512.50	\$11,696.86	\$5,504.00	\$4,990.89	\$22,501.61	
Woodstock High	\$31.27	11331	\$354,352.76	\$274,494.95			\$9,975.00	\$14,991.80	\$7,740.00	\$12,111.89	\$35,039.12	
Stanley Complex	\$16.45	11463	\$188,611.40	\$67,901.01	\$73,460.85		\$0.00	\$12,090.00	\$3,850.00	\$8,265.28	\$9,898.49	\$13,145.77

Utilities Expenditures – Cost per Square Meter: Average and Median

- The District average cost per square meter is \$28.01 while the median is \$27.86.
- The average operating cost per Elementary square meter is \$28.30 and the median is \$28.11.
- The average operating cost per Middle School square meter is \$25.19 and the median is \$22.38.
- The average operating cost per High School square meter is \$29.96 and the median is \$28.75.

Utilities Expenditures – Cost Per Student For the 12 month period ending March 31, 2014

Elementary School

School	Cost Per Student	Student Enrollment 2013	Total	Electricity	Fuel	Natural Gas	Snow	Water/ Sewage	Garbage Removal	Cleaning Supplies/ Services	Minor Repair
Andover Elementary	\$586.84	319	\$187,840.60	\$77,298.07	\$47,701.74		\$11,500.00	\$17,225.00	\$2,752.00	\$5,379.65	\$25,984.14
Assiniboine Avenue Elementary	\$249.04	250	\$62,260.53	\$13,893.24		\$29,516.50	\$6,687.80	\$2,687.80	\$1,781.26	\$1,890.37	\$5,801.56
Barkers Point	\$262.11	342	\$89,640.34	\$46,195.68	\$8,033.72		\$4,754.15	\$1,749.76	\$3,735.67	\$6,934.60	\$18,236.76
Bath Elementary	\$441.90	140	\$61,866.55	\$12,300.48	\$27,678.44			\$7,040.48	\$2,040.00	\$2,542.79	\$10,264.36
Bristol Elementary	\$323.43	129	\$41,722.49	\$8,071.14	\$16,548.86		\$2,100.00	\$3,378.69	\$2,200.00	\$2,095.91	\$7,327.89
Burton Elementary	\$475.90	48	\$22,843.22	\$4,430.72	\$12,493.11		\$2,400.00	\$0.00	\$342.00	\$238.69	\$2,930.70
Chipman Elementary	\$563.83	111	\$62,584.58	\$8,726.47	\$28,762.11		\$8,325.02	\$2,944.75	\$2,764.91	\$1,776.98	\$9,282.34
Coles Island	\$1,815.48	28	\$50,833.30	\$30,137.99			\$5,951.66	\$0.00	\$1,911.85	\$356.79	\$12,472.79
Connaught Street	\$199.11	272	\$54,159.19	\$12,723.47		\$22,764.18	\$3,068.88	\$1,770.08	\$2,971.06	\$4,548.39	\$6,313.13
Debec Elementary	\$796.44	47	\$37,526.48	\$10,410.20	\$14,892.33		\$5,480.00	\$0.00	\$3,500.00	\$1,730.70	\$1,513.25
Doaktown Elementary	\$1,692.71	74	\$125,266.50	\$32,257.81	\$60,303.30		\$10,000.02	\$15,306.65	\$2,370.66	\$2,583.20	\$2,438.86
Donald Fraser Memorial	\$706.22	136	\$96,045.92	\$58,442.41			\$13,225.00	\$6,058.65	\$2,752.00	\$2,414.72	\$13,153.14
Florenceville Elementary	\$380.80	219	\$83,394.23	\$41,027.12	\$26,347.61		\$845.00	\$5,830.96	\$2,100.00	\$3,692.46	\$3,551.08
Forest Hill	\$297.66	123	\$36,614.85	\$6,520.28		\$14,127.79	\$4,099.98	\$1,468.53	\$1,343.53	\$1,605.76	\$7,446.98
Garden Creek	\$291.92	277	\$80,861.27	\$52,196.87			\$4,386.65	\$2,803.95	\$3,025.67	\$3,926.36	\$14,541.77
Geary Elementary Community	\$152.99	172	\$26,313.44	\$3,792.85	\$2,043.95		\$11,350.00	\$0.00	\$1,225.50	\$894.62	\$7,006.52
Gesner Street Elementary	\$328.66	289	\$87,423.73	\$25,611.30		\$23,567.62	\$7,041.65	\$7,183.51	\$1,895.25	\$1,784.90	\$20,339.50
Gibson-Hed Memorial	\$252.01	565	\$142,386.05	\$53,362.69		\$18,134.86	\$8,833.35	\$3,313.18	\$6,171.50	\$12,597.33	\$19,973.34

Utilities Expenditures – Cost Per Student For the 12 month period ending March 31, 2014

Elementary School continued.

School	Cost Per Student	Student Enrollment 2013	Total	Electricity	Fuel	Natural Gas	Snow	Water/ Sewage	Garbage Removal	Cleaning Supplies/ Services	Minor Repair
Harvey Elementary	\$400.80	195	\$78,156.16	\$40,894.52			\$3,475.02	\$5,245.49	\$4,508.21	\$3,020.11	\$21,012
Hubbard Avenue Elementary	\$374.80	280	\$104,943.67	\$22,191.98		\$40,245.00	\$5,582.20	\$12,976.86	\$2,012.99	\$2,684.09	\$18,248
Kingsclear Consolidated	\$358.38	111	\$39,781.69	\$6,283.78	\$15,641.49		\$3,628.88	\$293.53	\$1,212.45	\$4,750.97	\$7,972
Lincoln Elementary Community	\$286.67	194	\$55,613.77	\$18,623.78		\$20,144.86	\$4,750.00	\$0.00	\$1,382.25	\$3,574.49	\$7,138
Liverpool Street	\$250.56	304	\$76,170.91	\$47,515.59			\$4,566.68	\$5,002.87	\$3,320.59	\$7,399.88	\$8,365
McAdam Avenue	\$404.18	78	\$31,525.76	\$6,349.02		\$13,728.05	\$3,254.04	\$642.56	\$851.99	\$1,470.08	\$5,230
McAdam Elementary	\$823.80	71	\$58,489.89	\$35,666.06			\$5,766.68	\$6,570.09	\$1,641.45	\$1,333.97	\$7,511
Niavie Elementary	\$870.00	44	\$38,280.03	\$5,091.58	\$14,803.85		\$9,000.00	\$0.00	\$3,400.00	\$1,410.05	\$4,574
Montgomery Street	\$207.97	216	\$44,921.69	\$12,310.54		\$15,456.87	\$3,254.88	\$2,095.62	\$2,359.37	\$5,135.67	\$4,308
Nackavic Elementary	\$407.60	202	\$82,334.65	\$53,209.70			\$8,990.00	\$12,621.78	\$2,500.00	\$3,337.70	\$1,675
Nashwaak Valley	\$806.40	123	\$74,567.55	\$38,363.96			\$19,833.32	\$0.00	\$1,343.53	\$2,191.86	\$12,854
Nashwaak Memorial	\$362.41	225	\$81,542.79	\$43,463.33			\$3,254.10	\$2,031.60	\$2,457.68	\$4,631.41	\$25,704
New Maryland Elementary	\$348.40	472	\$164,443.70	\$116,331.12			\$12,499.98	\$4,692.70	\$5,155.66	\$8,100.64	\$17,763
Park Street	\$255.50	421	\$107,567.23	\$35,018.46		\$30,240.85	\$8,163.88	\$2,812.91	\$4,598.58	\$5,371.10	\$21,341
Priestman Street Elementary	\$238.77	334	\$127,504.63	\$78,083.44			\$6,000.00	\$8,297.45	\$5,832.88	\$7,880.74	\$21,410
Royal Road	\$255.68	413	\$105,597.38	\$73,009.27			\$9,671.88	\$4,788.79	\$4,511.20	\$3,075.62	\$10,540
Southern Carleton Elementary	\$307.53	388	\$116,862.90	\$30,630.65	\$57,523.77		\$5,995.00	\$0.00	\$3,780.00	\$4,301.04	\$14,632
Summerhill Street Elementary	\$293.26	243	\$71,262.83	\$22,935.28		\$18,531.53	\$6,657.20	\$2,420.32	\$1,731.38	\$3,163.38	\$15,823
Upper Miramichi Elementary	\$513.72	117	\$80,105.70	\$11,891.60	\$31,968.41		\$5,500.02	\$0.00	\$3,748.21	\$2,738.67	\$4,258
Woodstock Centennial Elementary	\$268.31	406	\$108,933.63	\$63,115.53			\$5,795.00	\$9,098.51	\$4,100.00	\$6,555.36	\$20,269

Utilities Expenditures – Cost Per Student For the 12 month period ending March 31, 2014

Middle School

School	Cost Per Student	Student Enrollment 2013	Total	Electricity	Fuel	Natural Gas	Snow	Water/ Sewage	Garbage Removal	Cleaning Supplies/ Services	Minor Repair
Keswick Ridge	\$343.30	145	\$49,778.27	\$12,813.21	\$19,956.29		\$5,899.98	\$0.00	\$1,583.84	\$2,958.21	\$6,566.74
Bath Middle	\$2,221.71	41	\$91,090.06	\$17,905.59	\$38,682.72		\$3,680.00	\$9,415.48	\$2,340.00	\$2,405.73	\$16,660.54
Bliss Carman Middle	\$236.24	603	\$142,451.99	\$63,884.53		\$33,857.93	\$8,500.02	\$3,062.29	\$6,586.57	\$9,880.71	\$16,679.94
Centerville Community	\$476.01	268	\$127,571.66	\$84,528.18			\$8,000.00	\$7,252.38	\$3,500.00	\$2,056.41	\$22,234.69
Devon Middle	\$313.59	489	\$153,343.94	\$80,645.95		\$28,412.83	\$4,500.00	\$5,761.69	\$5,341.35	\$13,072.67	\$15,609.45
Florenceville Middle	\$588.39	205	\$120,620.22	\$17,369.49	\$67,673.14		\$1,100.00	\$7,002.60	\$4,140.00	\$4,241.44	\$19,093.55
Gagetown School	\$931.73	88	\$81,992.40	\$14,602.94	\$28,956.77		\$7,900.02	\$3,900.00	\$627.00	\$1,732.15	\$25,173.52
George St. Middle	\$283.27	649	\$183,839.99	\$135,792.11			\$9,578.88	\$4,371.76	\$7,089.03	\$14,965.78	\$12,042.43
Harold Peterson Middle	\$371.15	323	\$119,881.94	\$28,736.62		\$49,473.61	\$7,393.35	\$13,812.51	\$1,895.25	\$1,310.83	\$17,259.57
Keswick Valley Memorial	\$358.44	254	\$91,043.32	\$70,102.35			\$4,500.00	\$402.96	\$4,416.01	\$2,839.07	\$8,782.93
Monk Elementary/Middle	\$462.55	324	\$149,867.19	\$93,748.31			\$10,809.95	\$8,049.01	\$8,069.22	\$5,863.27	\$23,327.42
Nackavic Middle	\$735.48	138	\$100,025.66	\$74,641.82				\$9,376.17	\$2,940.00	\$2,342.11	\$10,725.56
Nashwaak Middle	\$766.31	587	\$449,621.67	\$400,843.10		\$2,959.13		\$4,301.06	\$6,411.80	\$3,719.50	\$31,587.08
Perth-Andover Middle	\$471.34	198	\$93,324.51	\$44,982.31			\$24,500.00	\$11,925.00	\$2,752.00	\$2,904.84	\$6,260.36
Ridgeview Middle	\$341.32	349	\$119,120.79	\$30,370.52		\$51,159.70	\$7,416.65	\$3,808.04	\$2,486.63	\$1,441.77	\$20,437.48
Sunbury West	\$574.05	229	\$131,457.57	\$96,465.75			\$9,187.32	\$13,200.00	\$1,631.63	\$1,722.60	\$9,250.27
Woodstock Middle	\$479.28	391	\$187,397.10	\$39,700.98	\$99,632.04		\$5,650.00	\$9,790.56	\$5,100.00	\$5,674.20	\$21,649.32

Utilities Expenditures – Cost Per Student For the 12 month period ending March 31, 2014

High School and K-12

School	Cost Per Student	Student Enrollment 2013	Total	Electricity	Fuel	Natural Gas	Snow	Water/ Sewage	Garbage Removal	Cleaning Supplies/ Services	Minor Repair
Cambridge-Narrows	\$740.54	146	\$108,118.71	\$62,648.86			\$8,670.00	\$211.00	\$9,968.15	\$3,859.22	\$22,761.48
Canterbury High	\$704.86	209	\$147,316.13	\$56,890.44	\$59,074.29		\$6,500.00	\$0.00	\$4,200.00	\$4,187.88	\$16,463.52
Carleton North High	\$759.62	556	\$422,346.64	\$219,199.75			\$5,100.00	\$18,092.34	\$6,200.00	\$149,998.20	\$22,756.35
Central NB Academy	\$916.33	204	\$186,930.72	\$66,271.40	\$68,235.82		\$30,000.00	\$0.00	\$8,585.65	\$6,171.99	\$17,665.86
Chipman Forest Ave	\$703.19	202	\$142,044.36	\$104,785.01			\$10,907.50	\$4,712.00	\$5,030.91	\$8,025.13	\$8,583.81
Fredericton High	\$301.23	1900	\$572,337.55	\$433,443.40	\$62.89		\$19,480.02	\$0.00	\$20,753.80	\$23,047.57	\$75,549.87
Hartland Community	\$494.99	619	\$306,397.54	\$219,956.20			\$16,375.00	\$23,911.25	\$7,080.00	\$8,500.72	\$30,574.37
Harvey High	\$548.02	270	\$147,965.51	\$101,928.49			\$12,550.02	\$6,888.97	\$6,242.13	\$7,642.38	\$12,713.52
John Caldwell	\$410.88	486	\$199,686.95	\$143,538.53			\$16,990.00	\$6,023.30	\$5,504.00	\$3,365.87	\$24,265.25
Leo Hayes High	\$476.18	1784	\$849,505.73	\$357,569.97			\$17,775.40	\$15,188.46	\$8,160.00	\$412,717.39	\$38,094.51
McAdam High	\$939.29	110	\$103,321.55	\$74,370.75			\$7,866.68	\$3,056.40	\$2,643.09	\$4,032.62	\$11,452.01
Minto Memorial High	\$748.42	211	\$157,916.16	\$113,371.79			\$9,722.00	\$6,371.79	\$5,254.96	\$2,613.26	\$20,582.36
Nackawic Senior High	\$659.43	264	\$167,495.01	\$117,363.51			\$19,667.00	\$14,064.23	\$4,100.00	\$3,376.68	\$8,923.59
Oromocto High	\$332.41	1159	\$385,264.34	\$134,728.30		\$130,130.00	\$13,171.15	\$56,311.88	\$8,257.88	\$9,109.65	\$33,555.48
Saint Mary's Academy	\$1,049.14	177	\$185,697.19	\$70,469.05			\$12,500.00	\$9,992.06	\$1,560.00	\$84,760.93	\$6,415.15
Southern Victoria High	\$930.62	336	\$312,689.32	\$95,868.59	\$120,542.84		\$15,250.00	\$18,550.01	\$5,504.00	\$2,665.68	\$54,308.20
Tobique Valley High	\$955.91	218	\$208,388.15	\$65,484.43	\$84,697.86		\$13,512.50	\$11,696.85	\$6,504.00	\$4,990.89	\$22,501.61
Woodstock High	\$573.39	618	\$354,352.76	\$274,494.95			\$9,975.00	\$14,991.80	\$7,740.00	\$12,111.89	\$35,039.12
Stanley Complex	\$731.05	258	\$188,611.40	\$67,901.01	\$73,460.85	\$0.00	\$12,090.00	\$3,850.00	\$8,265.28	\$9,898.49	\$13,145.77

Utilities Expenditures – Cost per Student: Average and Median

- The District average cost per student is \$548.45 while the median is \$452.23.
- The average operating cost per Elementary student is \$464.63 while the median is \$353.40.
- The average operating cost per Middle School students is \$585.64 and the median is \$471.34
- The average operating cost per High School student is \$682.92 and the median is \$704.86.

Legislation

Article 36.9(5)(h) of An Act to amend the Education Act States: A District Education Council shall prepare annually for submission to the Minister a report that identifies priorities respecting capital construction projects within the school district.

The following is a summary of the capital improvement projects for the 2014-2015 school year.

Included are items such as roof repairs, window replacements, installation of ventilation systems, masonry work, furnace replacements, and a variety of other repairs.

Department of Education Approved Capital Improvement Projects 2014-2015

School	Project	Allocation
Woodstock High School	Sprinkler System Phase 1	\$ 200,000
Fredericton High School	Building Envelope (Windows)	\$ 544,000
Summerhill Street Elementary	Fire Integrity (Sprinkler Connection)	\$ 100,000
Connaught Street School	Fire Integrity (Sprinkler System)	\$ 375,000
New Maryland Elementary	Fire Integrity (Sprinkler Connection)	\$ 50,000
Ridgeview Middle School	Heating System (Boiler Room upgrade)	\$ 20,000
Park Street School	Building Envelope (Windows)	\$ 105,000
Bath Elementary School	Building Envelope (Windows)	\$ 210,000
Centreville Community School	Roof Replacement	\$ 75,000
Fredericton High School	Roof Replacement	\$ 360,000
Tobique Valley High School	Roof Replacement	\$190,000
Southern Victoria High School	Roof Replacement	\$150,000
Royal Road School	Roof Replacement	\$ 20,000
Harvey Elementary School	Roof Replacement	\$ 10,500
Liverpool Street School	Roof Replacement	\$ 70,000
Saint Mary's Academy	Roof Replacement	\$155,000
Harvey High School	Roof Replacement	\$170,000

Policy 409 Multi-Year School Infrastructure Planning

Section 6.1.1. of Policy 409 – *Multi-year School Infrastructure Planning* states: “Each school district must prepare a district multi-year school infrastructure plan for submission to the Minister. The plan will comprise 5 years. The plan must be updated annually by June 30th, with the exception of the capital improvement project priority list which shall be provided no later than September 30th.”

Recommendations for Major Capital Projects 2014-2015

Capital Improvement List submitted for 2014-2015

-----Link to DEC Portal document for Capital
Improvement projects-----

An Example of the School by School view of data:

-----Link to DEC Portal document of the
Infrastructure Binder Information-----

Policy 409 – Multi Year School Infrastructure Planning

August 23, 2014
ASD-W DEC Retreat

Purpose, Application, Definitions, Legal Authority and Goals/Principles

- ▶ Beginning points to the policy
- ▶ Provides information as to why policy is in place and the legal authority for it
- ▶ Defines language contained within the policy
- ▶ Ed Act and Relevant Policy at end

Multi-Year Infrastructure Plan

- ▶ Ours is on the DEC portal, in electronic fashion
- ▶ Very valuable organization and summarization of our 75 schools
- ▶ Helps inform our decisions on possible sustainability studies

Infrastructure Planning

- ▶ New Schools
- ▶ Naming Schools
- ▶ Studying the Sustainability of Schools
 - Typical "409 Review"
 - Process Outlined
 - Public Consultation
- ▶ Closing a School Permanently

Grade Reconfiguration

- ▶ Studies as a DEC, District
- ▶ Involve School Leadership

Appendix A

- ▶ Facility Review Status
- ▶ Template that can be used in conducting the study

Appendix B

- ▶ Major Capital Construction Process
- ▶ Sustainability Study Process
- ▶ Grade Reconfiguration Process