



Sustainability Study Kingsclear Consolidated School



Public Meeting #1 Agenda

- Introductions
- Review of Provincial Policy 409 Multi-Year School Infrastructure Planning
- Presentation of Information – Kingsclear Consolidated School
- Question and Answer
- What's Next?
 - Online Resources and Feedback
 - Next Meetings



Provincial Policy 409

Multi-year School Infrastructure Planning

- Outlines a number of responsibilities to do with facilities in our system
- Sections 6.4, 6.5 and 6.6 are relevant for sustainability studies
- Three Public Meetings
 - Meeting 1 – Presentation of information from District regarding school (Policy 409, 6.4.4)
 - Meeting 2 - Presentation from stakeholders regarding their thoughts on the sustainability of the school and relevant factors
 - Meeting 3 – Final review of information by District Education Council (DEC) and subsequent motion on next steps



Provincial Policy 409

Multi-year School Infrastructure Planning

- Three Possible Outcomes
 - Status Quo
 - Recommendation to Minister to repair the school
 - Recommendation to Minister for closure, moving the students elsewhere
 - a) Close and move students to a new school in Hanwell if and when it is built.
 - b) Close in June 2018.
 - c) Close in June 2017.
- Not Designed as an “Us-Against-Them” process; public meetings are not designed to facilitate debate between two parties



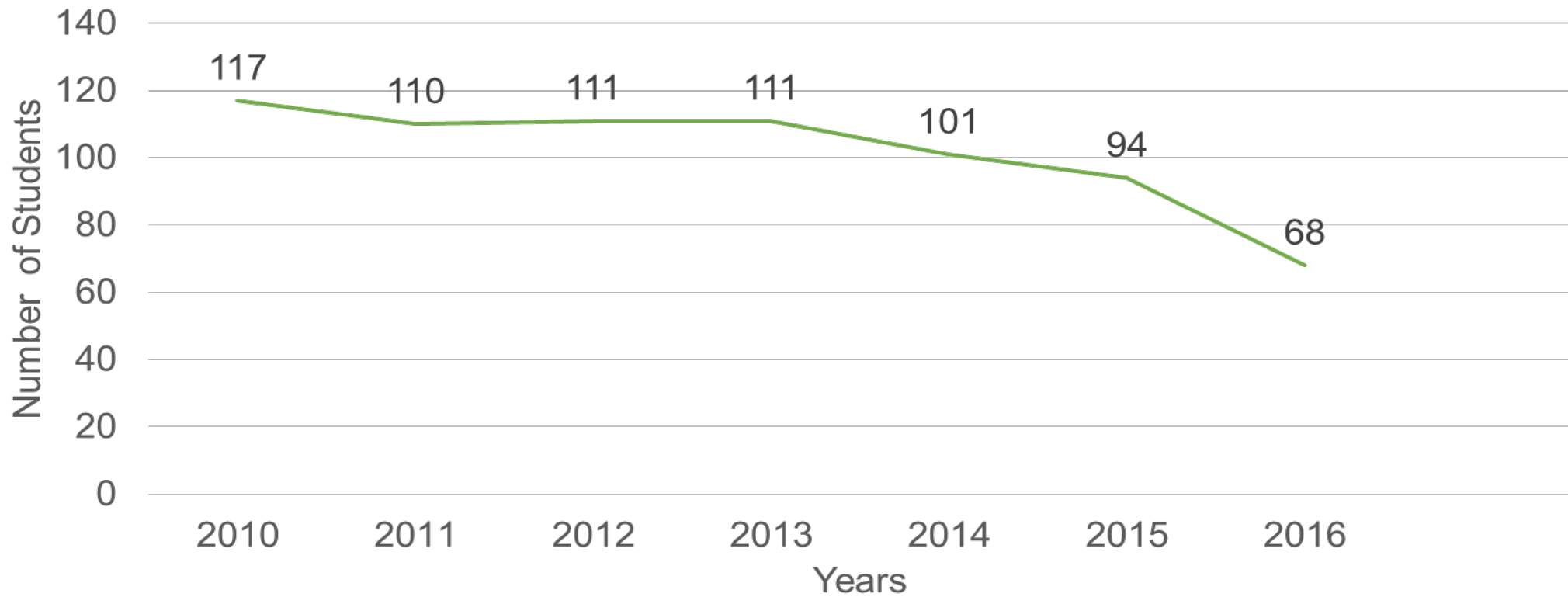
Information to be Presented

- Enrolment
- Quality of Education Programs & Services
- Provincial Assessment Results & Student Perception Results
- Health & Safety Building Assessment
- Transportation
- Finances
- Impact on Other Schools
- Economic Development
- Impact on the Local Community



Enrolment

Kingsclear Consolidated School

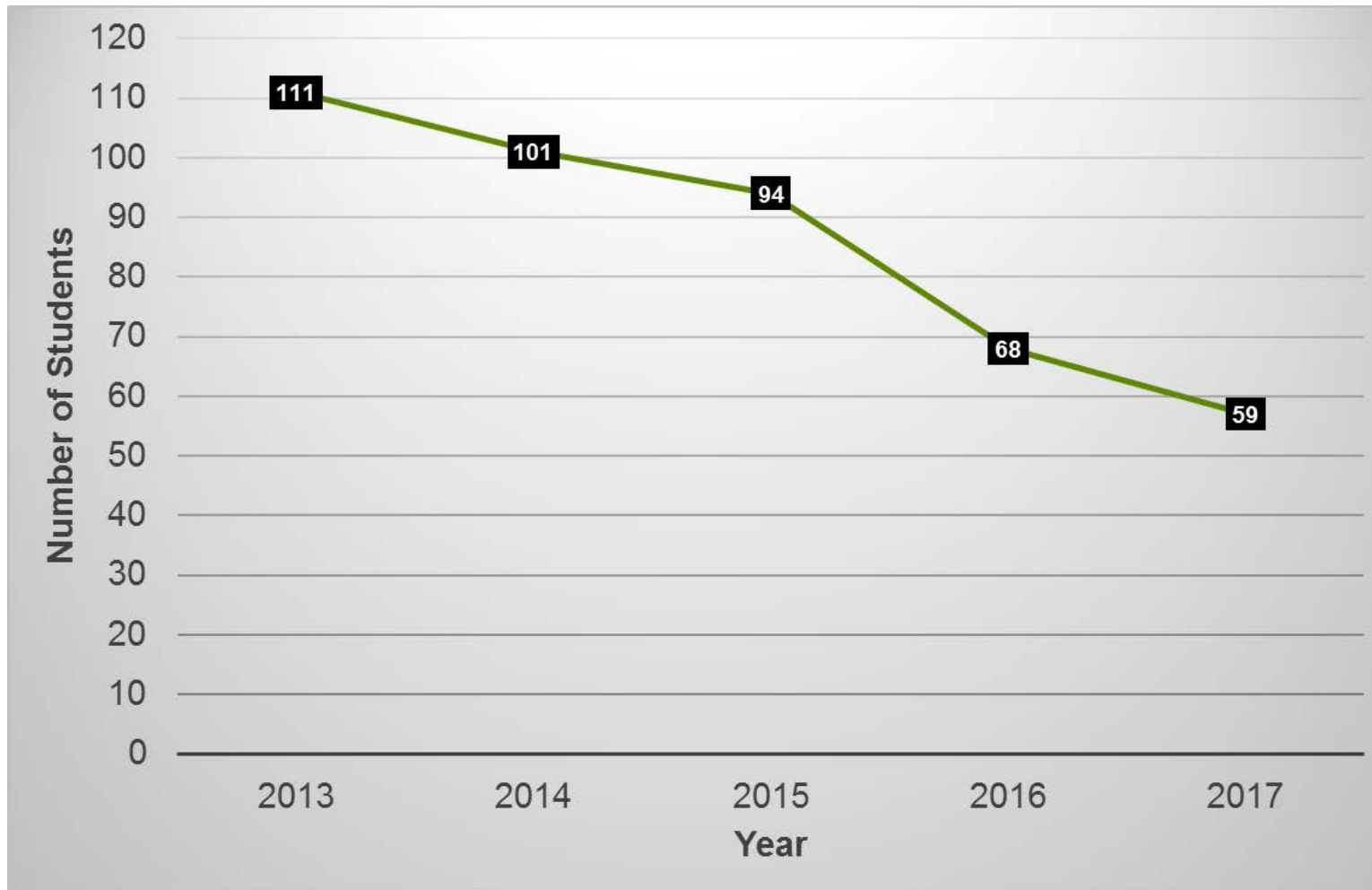


Enrolment By Grade Level

	2010	2011	2012	2013	2014	2015	2016	2017 Projected
K	24	21	24	16	17	21	17	18
1	21	22	24	26	17	15	15	11
2	28	23	24	23	26	19	12	15
3	6	17	14	16	12	5	8	3
4	18	9	17	13	18	12	4	8
5	20	18	8	17	11	22	12	4
Total	117	110	111	111	101	94	68	59



Projected Enrolment Kingsclear Consolidated School



Projected 2017

- 18 - K registrations
- 11 – Grade 1 (17 minus 6 registrations for Gr 1 FI)
- 15 – Grade 2
- 3 – Grade 3 (12 minus 9 registrations for Gr 3 FI)
- 8 – Grade 4
- 4 – Grade 5



*Excited. Involved.
Prepared.*

Functional Capacity

Functional Capacity Data	Student Enrolment	Number of Classrooms	Classrooms in Use	School Capacity	Capacity Rating
Based on 24 Students per class	68	7	5	168	40.5%



Quality of Education Programs & Services

Educational Staff

The provincial staffing formula calls for:

Full Time Equivalent (FTE) 2016-17	Kingsclear Consolidated School
Classroom Teachers	5.5 FTE
Administration	0.5 FTE
Guidance	0.2 FTE
Resource	0.6 FTE
Total	6.8 FTE

Student-Teacher Ratio

Year	Total Number Student-Teacher	Student-Teacher Ratio
2015-16	94 : 8.0	11.75 : 1
2016-17	68 : 6.8	10.0 : 1



*Excited. Involved.
Prepared.*

Support Staff Information

Full Time Equivalent (FTE) 2016-17	Kingsclear Consolidated School
Educational Assistants	30 hours per week (3.0 FTE)
Administrative Assistant II	36.25 hours per week (1.0 FTE)
School Library Worker I	5 hours per week (0.138 FTE)
Custodian I	40 hours per week (1.0 FTE)



Student-Teacher Ratio

School	Year	Total Number Student-Teacher	Student-Teacher Ratio
Kingsclear Consolidated	2016-2017	68 : 6.8	10 : 1
Garden Creek	2016-2017	297 : 20.0	14.85 : 1
Burton (K-2)	2016-2017	48 : 4.0	12 : 1
Doaktown Elementary	2016-2017	69 : 6.7	10.3 : 1
McAdam Avenue	2016-2017	74 : 6.6	11.2 : 1



Class Size Comparisons

	Minimum Class Size	Maximum Class Size	Average Class Size	Number of Classes 2016-2017	Projected Number of Classes * 2017-2018
Kingsclear Consolidated School (K-5)	12	17	13.6	5	4
Garden Creek School (K-5)	13	25	19.8	15	16
Burton (K-2)	14	18	16	3	3
Doaktown Elementary (K-5)	12	17	13.8	5	5
McAdam Avenue (K-5)	13	18	14.8	5	5

* with projected number of FI students enrolled at other schools



Maximum class sizes

Grade Level	Maximum Number of Students
K-2	21
3	26
K-3 Combined Classes	16
Grades 4-6	28
Grades 3 -5 Combined Classes	23
Grades 7 to 12	29
Grades 5 to 12 Combined Classes	24



Core Curriculum and Supports

Kingsclear Consolidated School	Early French Immersion	Late French Immersion	Multi-purpose room (Gymnasium)	Music/Fine Arts Specialists	Educational Support Services	EST-Literacy	EST-Math	EST-French Immersion	EST-Science	Science Labs	Computer Lab
	N/A	N/A	Not Full Capacity	No	Yes	Yes One 6-week block by District EST-L	Yes One 2-week block by District EST-N	No	Yes One week block by District EST-S	No	No



Quality of Education Programs and Services

- Grade K students from Kingsclear Consolidated School enter Garden Creek School for French Immersion programs beginning in Grade 1.
- Grade 2 students from Kingsclear Consolidated School enter Garden Creek School for French Immersion programs beginning in Grade 3.
- Grade 5 students from Kingsclear Consolidated School enter George Street Middle School for both the English Prime and late French Immersion programs beginning in Grade 6.



Impact on Other Schools

Beyond a decision of status quo or a recommendation to fix/upgrade the school as it stands now, the following scenarios rise to the surface as possible considerations:

- Movement of students from Kingsclear Consolidated School to Garden Creek Elementary School for K-5.
- Future movement of students from Kingsclear Consolidated School to a new south side school built in the Hanwell Road area.
- The Ernst & Young south side study provided data on the south side elementary schools as a whole.



Scenarios

	Kingsclear Consolidated School (K-5)	Garden Creek School (K-5) (with KCS students)	Connaught Street School (K-5)	Priestman Street School (K-5)	New Hanwell School (K-5) 2022-2023 (with KCS students)
Projected 2017-2018 enrolment	59	342	289	511	500
Projected 17-18 number of homerooms	4	18	17	25	27
Projected 17-18 Functional Capacity	35.12%	95.00% 89.06% (with 1 modular)	75.26% 70.83% (with 1 modular)	81.89% 70.97% (with 4 modulars)	77.80%
Projected 17-18 Teacher FTE	5.06 FTE	23.62 FTE	21.94 FTE	33.22 FTE	35.30 FTE



Special Events that Encourage Community School Partnerships

- PSSC
- Parents of Kingsclear events such as:
 - Family movie nights
 - Hallowe'en Fun Day
 - Christmas Dinner
 - Meet the Teacher corn boil
- Heritage Fair
- Christmas concert
- UNB nursing students
- Community Career Fair – Hosted by PSSC
- School newsletters

For a sample of community activities and school partnerships as presented by the school and for school newsletters, please view the school's website

www.kingsclear.nbed.nb.ca



*Excited. Involved.
Prepared.*

Student Voice

- Student-Led activities, sports and clubs, such as:
 - Scrapbooking
 - Build a Model Race Car
 - Lego
- Grade 5 Student Leaders
- Best Buddies Program
- Thursday Think Tanks



Provincial Assessment Results

Grade 2 Reading

Year	Kingsclear Consolidated School	ASD-W	Province
2011-2012	95.7 %	78.0 %	79.1 %
2012-2013	100.0 %	80.3 %	79.5 %
2013-2014	95.8 %	76.8 %	77.5 %
2014-2015	83.3 %	77.3%	76.9 %
2015-2016	84.2 %	75.2 %	73.8 %



School Benefits

- Strong knowledge of all students' strengths and needs by all staff.
- All students are active participants in school wide initiatives.
- Little transition of students in and/or out of the school during the school year. Allows staff opportunity to interact with all students on a regular basis and supports the development of pro-social behaviours throughout the school community.
- Culture of collaboration is established among staff.
- Staff, parents and students have developed a strong community culture within the school.



School Challenges

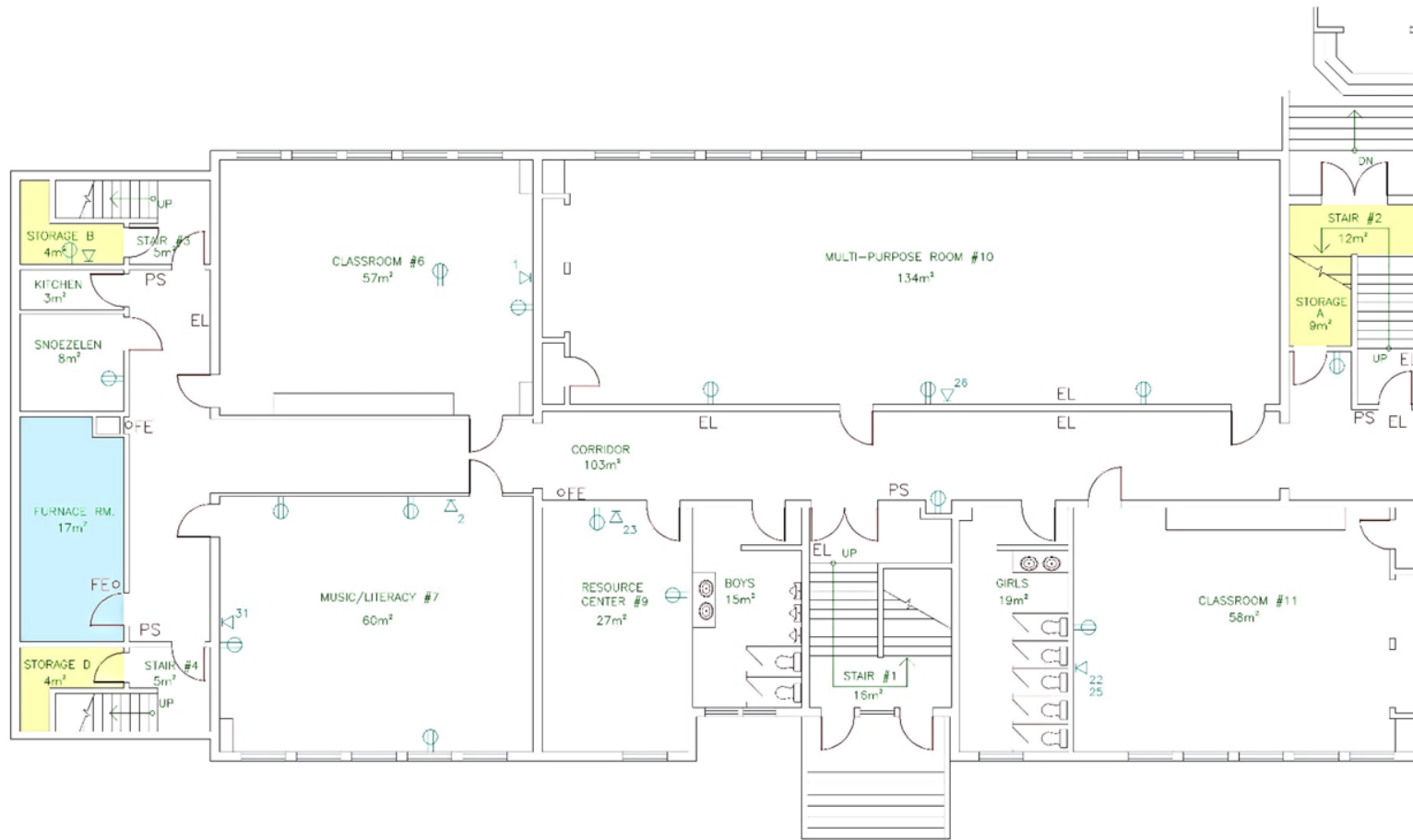
- Staff in positions of responsibility often required to teach specialty subjects and have a large percentage of time dedicated to teaching.
- Teacher teaming opportunities are sometimes challenging due to teacher schedules. In large part due to a small number of teaching staff. Funding for educational staff is based on student enrolment.



Building Summary

- Two-storey wood framed school constructed in 1950.
- Rests on approximately 4 acres of land.
- School was constructed with 7 classrooms, library and a multi-purpose (gymnasium) room, a galley kitchen and administration office area.
- School is 1,332 square metres in area.





GROUND FLOOR PLAN
(SCALE: 3/32"=1'-0")

- STORAGE
- MECHANICAL / ELECTRICAL

NOTE

NO.	RÉVISIONS / REVISIONS	DATE	PAR / BY
XXXX	XXXX	XXXX	XXXX

Department of Education
Ministère de l'Éducation



TITRE / TITLE
Kingsclear School
3188 Woodstock Road
Fredericton, NB
- School District 18 -

FOUILLE / SCALE 3/32" = 1'-0"	DATE FEB 25/08
DOSSIER D.A.O. / C.A.D. FILE Kingsclear School.DWG	
DESSINÉ PAR / DRAWN BY C.STEEVES	NO DU DESSIN / DRAWING NO. A1
APPROUVÉ PAR / APPROVED BY XXXXX	



*Excited. Involved.
Prepared.*

Building Systems

- Serviced by municipal water and sewage systems.
- Heated by an oil-fired boiler system installed in 2009.
- No classroom mechanical ventilation in the school, with mechanical exhaust fans in the upgraded washrooms.
- Served by a 400 Amp Electrical service from NB Power.



School's Interior

- Flooring consists of a variety of vinyl floor tile, asbestos containing floor tile, minimal sheet flooring and terrazzo floors in the upgraded washrooms.
- The 4 student washrooms have been upgraded with new fixtures and finishes in 2009.
- Fire alarm panel upgrade completed in 2002.
- New LED and T8 lighting has been completed.



School's Exterior and Property

- Exterior of school is a painted stucco finish.
- Windows are wooden framed vinyl sliders.
- Parking is adequate for staff and visitors during the regular school day.
- School has a playground space, sports field and green space.
- There is a bus loading zone, with exterior stairs leading up to the school.



Capital Investments

Year	Scope of Work	Cost
2010	Roof Replacement	\$42,345
2010	Exterior Finishes	\$16,257
2009	Heating System	\$65,570
2009	Washroom Upgrades	\$51,051



Physical Plant Status

Capital Improvement Projects

School: Kingsclear Consolidated School (ASD-W)			Year Built	1950
District: ASD-W	School Number:	2614	City/Village:	Fredericton
		Enrollment:	94	Total Area (sqM):
		1332		
<u>Building Exterior and Site</u>				
Building Envelope	Exterior Windows	Replace all exterior windows and redo exterior wall finish.	2	
Building Envelope	Roofs	Replace roof #2@309sqm. Note: Estimated costs updated Feb'17.	3	
Site	Drainage	Upgrade drainage and water proofing.	3	
Site	Site Improvement	Site improvement	3	
<hr/>				
<u>Building Interior and Additions</u>				
Interior Aecessibility	Lift	Supply and install one elevator, one stairwell lift and ramps	2	
Interior Alterations and Renovations	Classrooms	Classroom upgrade	3	
Interior Alterations and Renovations	Hallways and Stairs	Corridor upgrade	3	
Interior Alterations and Renovations	Hallways and Stairs	Replace flooring (including underlay) on top floor plus four stairs	1	
Interior Finishes	Ceilings	Ceiling upgrade. Note: Estimated costs updated Feb'17.	3	
Interior Finishes	Interior Doors	Replace all classroom and office doors with fire rated doors.	3	
<hr/>				
<u>Fire Codes</u>				
Fire Prevention	Sprinkler System	Add sprinkler system if major renovations take place. Note: Estimated costs updated Feb'17.	3	
<hr/>				
<u>Mechanical and Electrical Systems</u>				
Electrical	Electrical Supply and Distribution	Install thirty-six new classroom receptacles and upgrade the electrical system to support new receptacles. Note: Estimated costs updated Feb'17.	2	
Heating and Ventilation	Ventilation System	New system including controls. Note: Estimated costs updated Feb'17.	2	
<hr/>				
				School Total: \$2,310,000.00



Transportation Study

- Students in Grades 6-12 that reside in the Kingsclear Consolidated School catchment area are bused to George Street Middle and Fredericton High schools. French Immersion students attend Garden Creek Elementary School.
- The morning school bus system has 4 buses transport students within the Kingsclear Consolidated catchment area into the Kingsclear Consolidated School.



Transportation Study (cont.)

- The afternoon school bus system has 2 buses transport students residing within the Kingsclear Consolidated School catchment area from Kingsclear Consolidated School.
- There would not be any anticipated impact with regards to the number of school buses or drivers if Kingsclear Consolidated School should close.



Transportation Study (cont.)

School	Longest Ride In	Longest Ride Out	Earliest Pick-up	Latest Drop Off	Average Ride Time
Kingsclear Consolidated School	44 min.	28 min.	7:08 a.m.	4:04 p.m.	20 min.
Garden Creek Elementary School Estimated times	53 min.	37 min.	7:00 a.m.	4:15 p.m.	29 min.
Potential Hanwell School Estimated times	55 min.	39 min.	7:00 a.m.	4:15 p.m.	31 min.

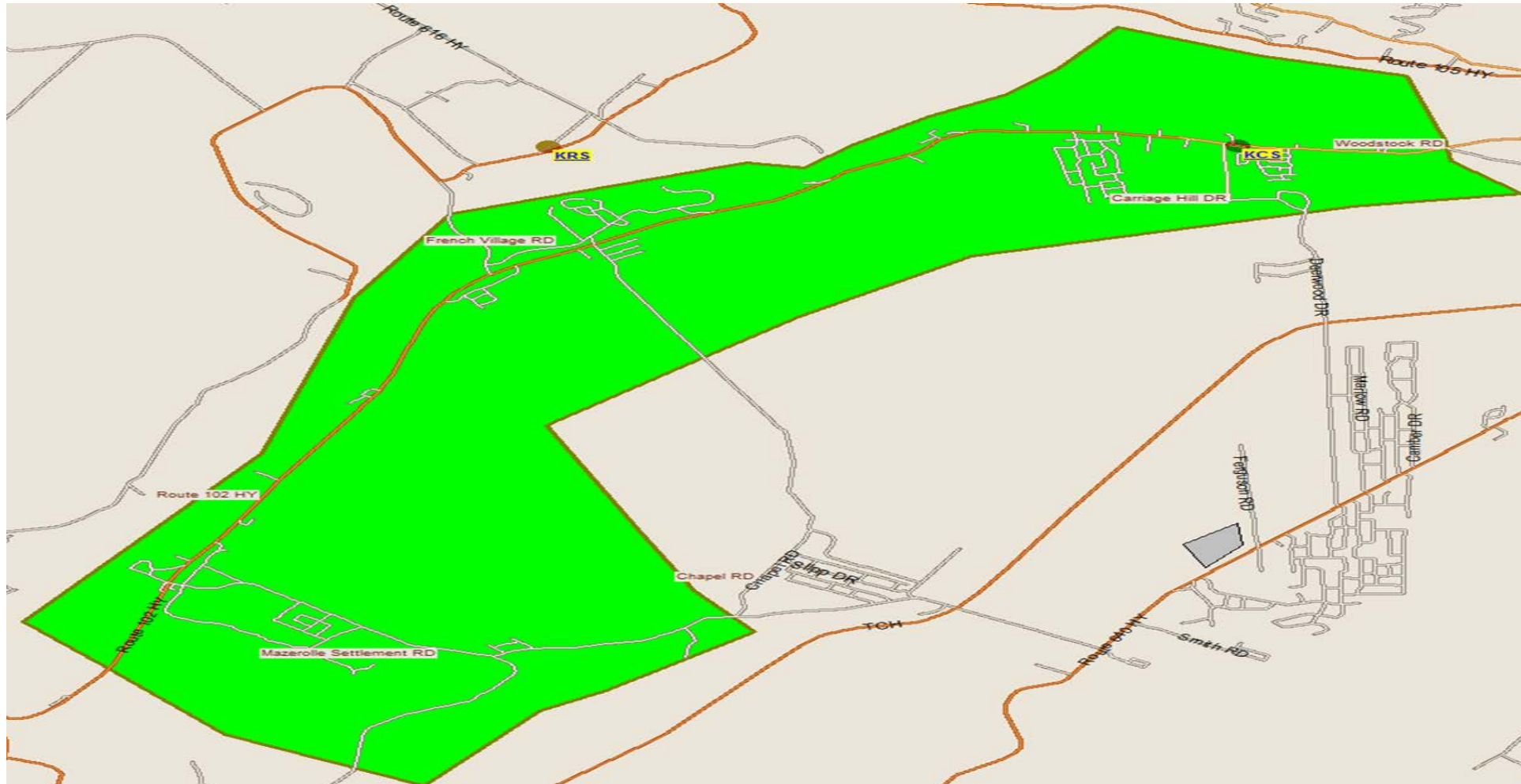


Current Student Address Distances

	Distance to Kingsclear Consolidated School (KM)	Distance to Garden Creek Elementary School (KM)	Distance to Potential Hanwell School (KM)
Average Distance	9.4	15	15
Maximum Distance	18.2	23.1	19
Minimum Distance	0.3	3.6	8



Transportation Study (cont.)



Excited. Involved.
Prepared.

Salaries

	Actual Costs		
Cost Centres	Fiscal Year 2015-2016	Fiscal Year 2014-2015	Fiscal Year 2013-2014
Salaries			
Administration	12,155	10,489	12,512
Teacher	540,668	581,363	516,810
Admin. Assistant	30,570	30,633	27,182
Educational Assistant	60,427	65,542	59,786
Custodian	35,784	35,642	35,462
Total	679,604	723,669	651,752



Assigned Budgets

Cost Centres	Actual Costs		
	Fiscal Year	Fiscal Year	Fiscal Year
	2015-2016	2014-2015	2013-2014
Assigned Budgets			
Regular Instruction	9,133	9,299	9,239
Admin.Support	2,254	2,294	2,280
Library	-	-	-
Teachers Working Conditions	1,880	1,972	1,936
Nutrition	937	1,031	1,036
Bilingual Learning Environ.	350	350	-
Wellness Grant	1,616	1,300	511
Co/Extra Trips	474	483	480
PSSC	308	335	331
Total	16,952	17,064	15,813



Facilities Costs

	Actual Costs		
Cost Centres	Fiscal Year	Fiscal Year	Fiscal Year
	2015-2016	2014-2015	2013-2014
Facilities Costs			
Electricity	4,798	5,499	6,284
Water and Sewer	296	516	294
Garbage Removal	541	932	1,212
Ground Maintenance	7,397	5,544	3,627
Heating Fuel	9,617	14,160	15,641
Cleaning Supplies	3,652	2,832	4,751
Minor Repairs	3,315	4,976	7,973
Total	29,616	34,459	39,782



Total Costs

	Actual Costs		
Cost Centres	Fiscal Year	Fiscal Year	Fiscal Year
	2015-2016	2014-2015	2013-2014
TOTAL COSTS	726,172	775,192	707,347



Employers, Business & Services

- Kingsclear Consolidated School (12 employees, plus 2 bus drivers)
- Green's Auto Parts
- Rod's Auto Care
- Island View Auto Body
- Valley Ridge Furniture
- Selco Equipment Sales
- Islandview Veterinary Hospital
- Everett Family Orchard
- Carriage Hill Equestrian Centre
- Hartt Island RV Resort
- Springhill Construction Limited
- Silverwood Arabians
- CRC RV SuperCentre
- Silverwood Inn & Suites
- Several home-based businesses including child care, hair dressing, yoga/fitness services and homemade products and crafts.
- Emergency Services are provided by the City of Fredericton (Dr. Everett Chalmers Regional Hospital & ambulance services, Fredericton Fire Department) and security by Fredericton Police Force.



Impact on the community

- Community enjoys a small school educational setting for the students in Kindergarten to Grade 5.
- Close community ties between the school and local service groups.
- Slight loss in employment opportunities within the school system within the community; tenured district employees would be placed elsewhere.
- Future of vacant building would be unknown and could have a positive or negative impact on the community.
- An interest in development of land in the neighbourhood of the school has been expressed.
- Public meeting # 2 will explore this impact further, as experts and stakeholders from the community share their thoughts.



Visit our Website

- Sustainability Study Timeline
- Minister Letters
- Parent Letters
- Kingsclear Consolidated School at a Glance
- Link to Policy 409
- Public Meeting #1 – Presentation
- www.asd-w.nbed.nb.ca



Community Engagement

- Feedback can be given:
 - via email at asdwsustainability@nbed.nb.ca
 - through our **public** discussion board at the [Kingsclear Consolidated School Sustainability Study](#) site on our webpage
 - mail to Carol Clark-Caterini, Anglophone West School District, 1135 Prospect Street, Fredericton, NB E3B 3B9





*Excited. Involved.
Prepared.*

Thank you for coming!



*Excited. Involved.
Prepared.*