

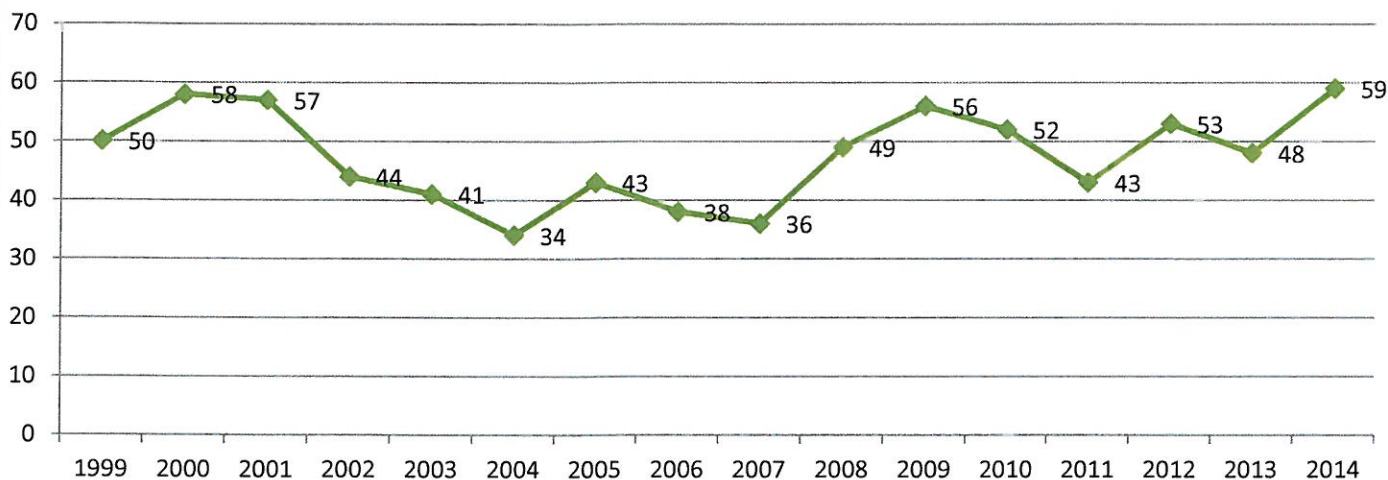


## Burton Elementary School

412 Route 102, Burton, NB E2V 3C7  
 Phone: (506) 357-4074 Fax: (506) 357-4040  
 Grades: K-2  
 Built: 1961

Functional Capacity Data based on 21 students per class	Student Enrollment	Number of Classrooms	Classrooms In Use	School Capacity	Capacity Rating
	59	5	3	105	56.2%

### School Enrollment Trends 1999 to 2014



#### Physical Description:

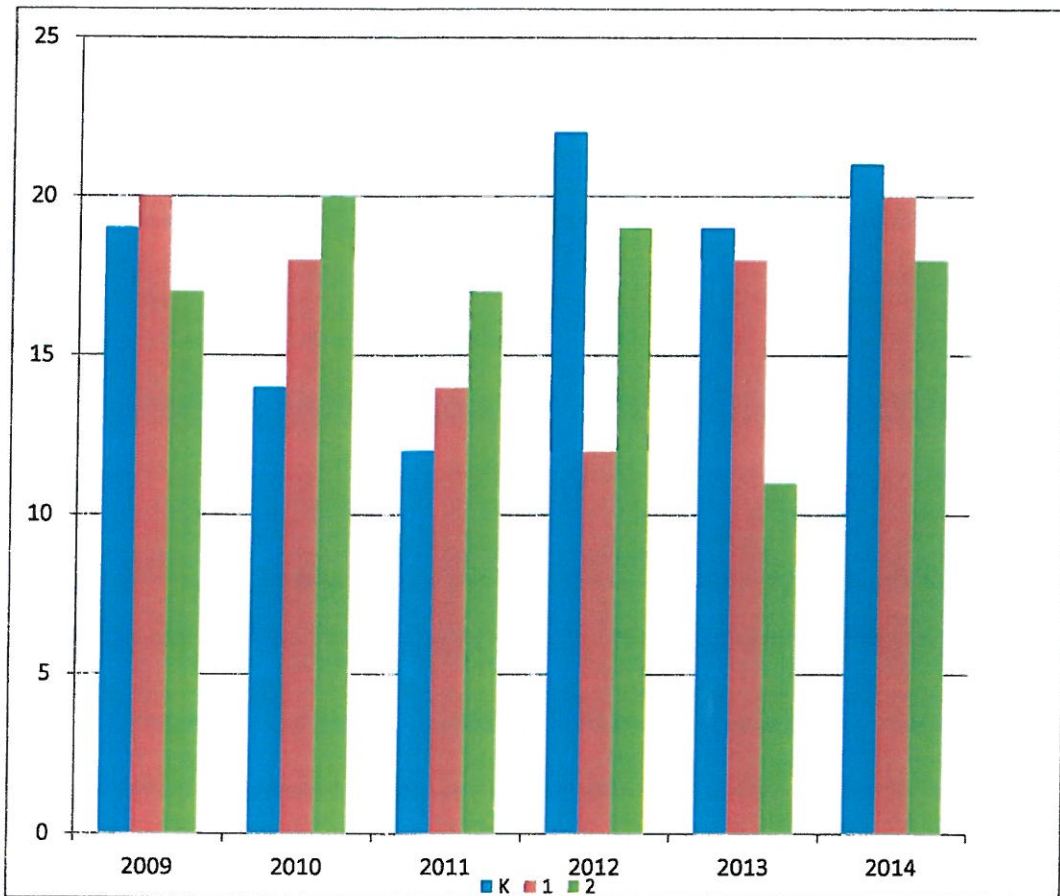
- Built in 1961.
- Owned by the Province of New Brunswick.
- New sewage treatment system installed August 2012.
- Removed carpet and panelling from gym walls and replace with gypsum board, crackfilled and painted, September 2010.
- Burton School is a wood frame structure in good condition. It has been well maintained and can serve the district well for the long term.
- The school has an Auditorium.
- The school does not have a cafeteria.
- The school is 811 square meters.



**Burton Elementary School**  
412 Route 102, Burton, NB E2V 3C7  
Phone: (506) 357-4074 Fax: (506) 357-4040  
Grades: K-2  
Built: 1961

### Enrollment 2009-2014

	2009	2010	2011	2012	2013	2014
<b>K</b>	19	14	12	22	19	21
<b>1</b>	20	18	14	12	18	20
<b>2</b>	17	20	17	19	11	18
<b>Total</b>	<b>56</b>	<b>52</b>	<b>43</b>	<b>53</b>	<b>48</b>	<b>59</b>





## **Burton Elementary School**

412 Route 102, Burton, NB E2V 3C7  
Phone: (506) 357-4074 Fax: (506) 357-4040

Grades: K-2

Built: 1961

---

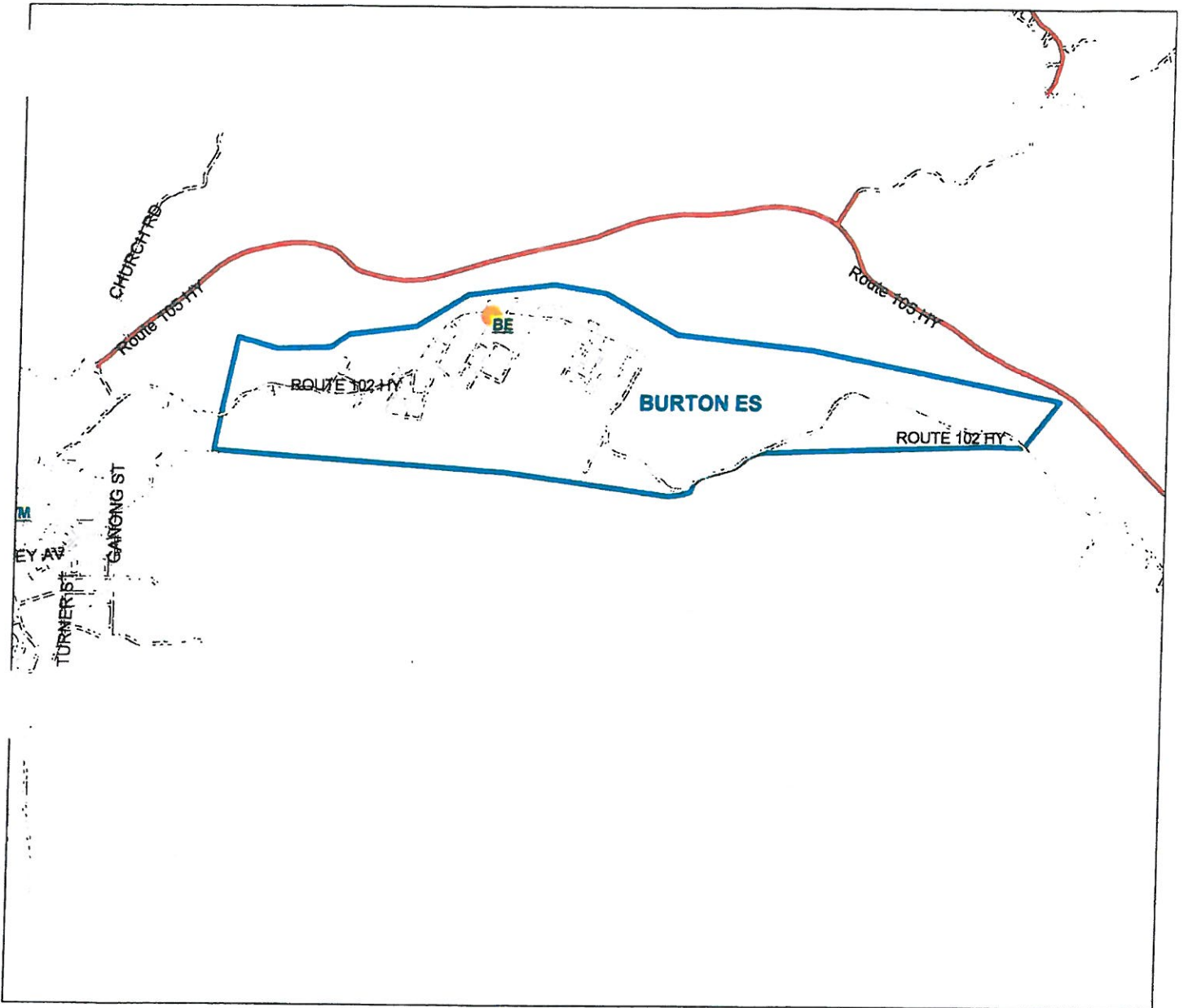
### **Feeder Schools**

Students move on to Hubbard Avenue Elementary School for grades 3-5.

### **Catchment Area Boundaries**

All grade K-2 students from # 174 to # 765 on Route 102 Highway, including all side streets therein.

# School District 17 District Map





## Burton Elementary School

412 Route 102, Burton, NB E2V 3C7  
Phone: (506) 357-4074 Fax: (506) 357-4040

Grades: K-2

Built: 1961

---

### Operational Costs

Electricity	\$	4,502.31
Water/Sewage	\$	-
Garbage Removal	\$	324.05
Snow Plowing	\$	3,316.65
Heating Fuel	\$	11,387.51
Natural Gas	\$	-
Cleaning Supplies/Services	\$	121.32
Minor Repairs/Renovations	\$	3,271.79
<b>Total</b>	<b>\$</b>	<b>22,923.63</b>

**Operational Costs Per Square Meter** \$ 28.26  
Based on: 811 Sq Meters

**Operational Costs Per Student** \$ 388.54  
Based on: 59 Enrollment



## Burton Elementary School

412 Route 102, Burton, NB E2V 3C7  
Phone: (506) 357-4074 Fax: (506) 357-4040

Grades: K-2

Built: 1961

### Major Capital and Capital Improvements Projects 2007-2014

School Year	Project	Capital Improvements	Major Capital
2010-2011	Interior Walls	\$ 10,557	
2010-2011	Sewage System	\$ 2,720	
2011-2012	Sewage System	\$ 8,810	
2012-2013	Heating System	\$ 17,185	
2012-2013	Sewage System	\$ 93,088	
<b>Total</b>		<b>\$ 132,360</b>	<b>\$ -</b>

# Capital Improvement Projects

School: Burton Elementary School (ASD-W)	City/Village: Burton	Enrollment: 59	Year Built: 1961
District: ASD-W	School Number: 2501	Total Area (sqM): 811	

**Building Exterior and Site**

Building Envelope	Description	Year Built	Total Area (sqM)
Other	Replace Siding on School.		
Site	Curbing & Driveway refinishing.		

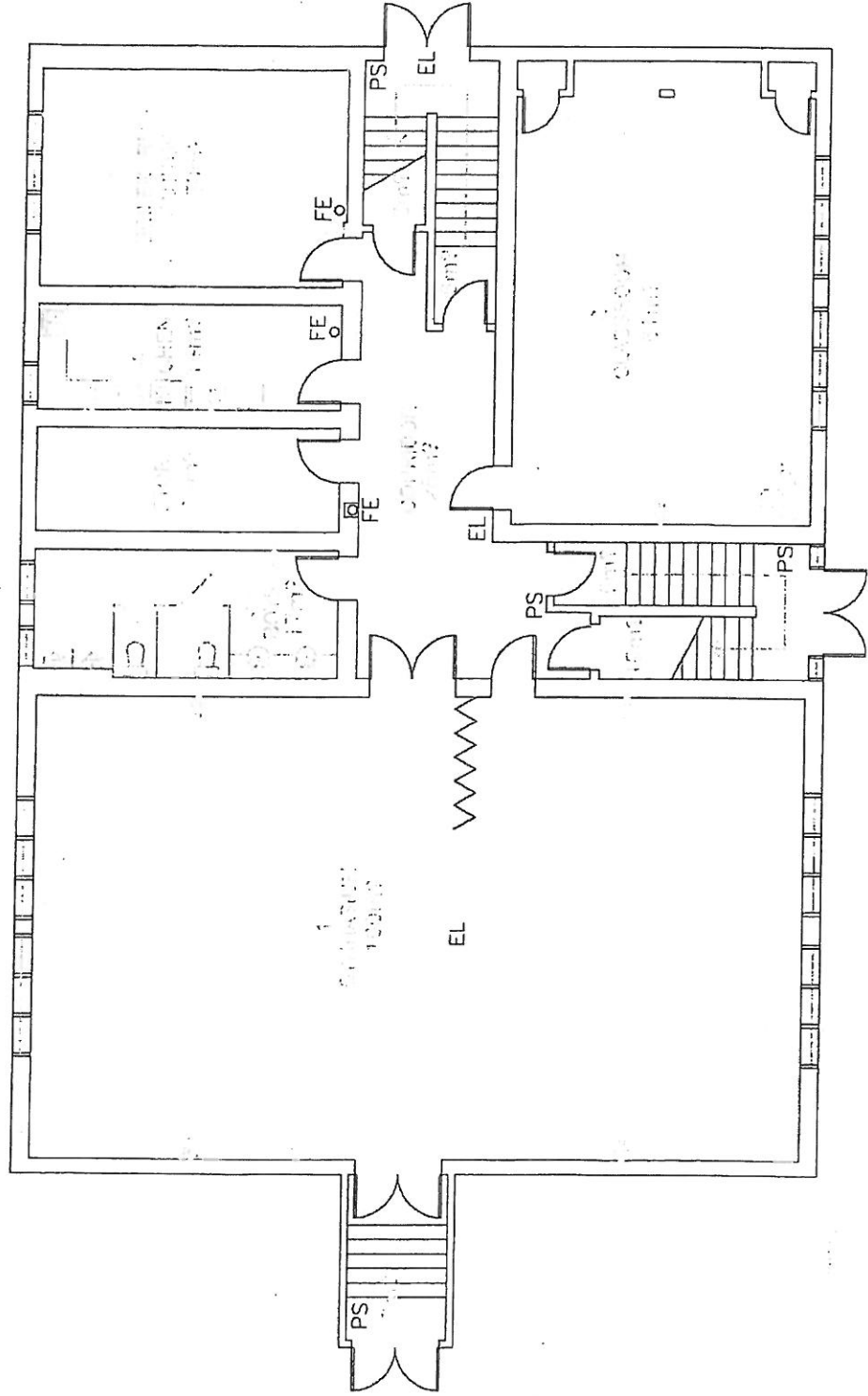
**Building Interior and Additions**

Interior Accessibility	Description	Year Built	Total Area (sqM)
Lift	Elevator and Access to school; a new exterior enclosure / site work could dramatically impact the estimate.		
Interior Finishes	Upgrade all old ceilings & lighting.		

**Mechanical and Electrical Systems**

Electrical	Description	Year Built	Total Area (sqM)
Electrical Supply and Distribution	Electrical system upgrade which may include Power Distribution, panels, receptacles.		
Heating and Ventilation	New ventilation system.		

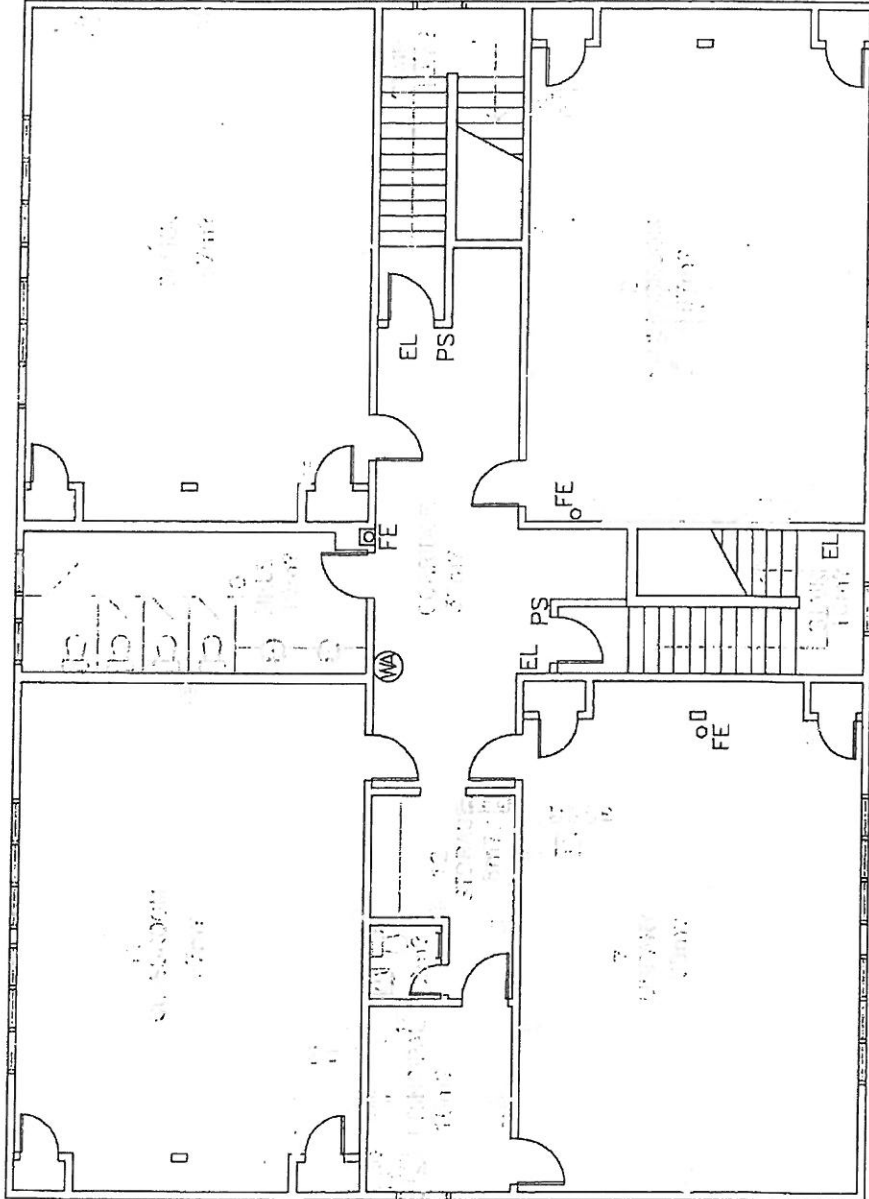
**School Total: \$573,000.00**



Burton Elementary Schc  
 412 Route 102  
 Burton, NB  
 - School District 17 -

A1





Burton Elementary Schc  
 412 Route 102  
 Burton, NB  
 - School District 17 -

A2



Burton Elementary