



Nackawic Senior High School

50 Landegger Drive, Nackawic, NB E6G 1E9

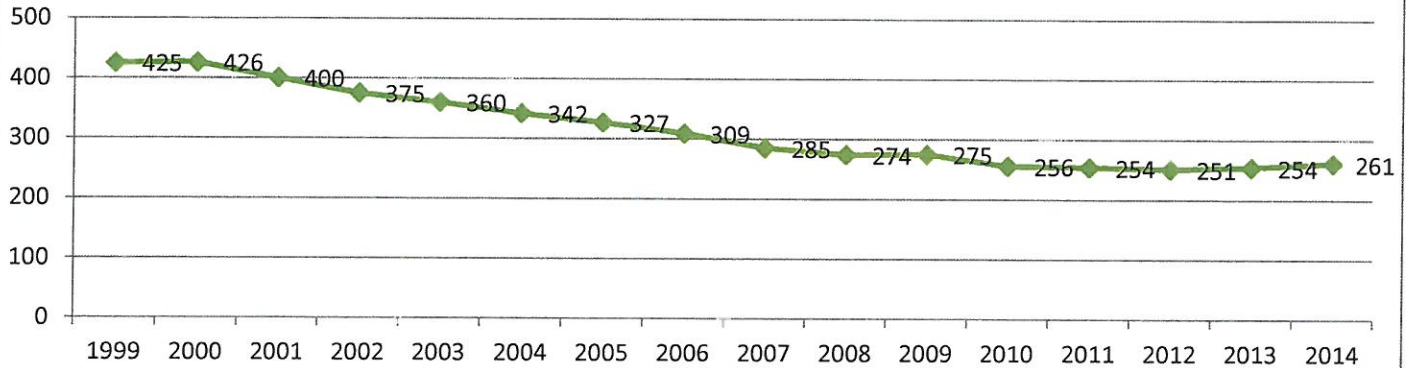
Phone: (506) 575-6010 Fax: (506) 575-6029

Grades: 9-12

Built: 1967

Functional Capacity Data based on 29 students per class	Student Enrollment	Number of Classrooms	Classrooms In Use	School Capacity	Capacity Rating
	261	20	13	580	45.0%

School Enrollment Trends 1999 to Present



Physical Description:

- Built in 1967 with a Classroom addition added in 1997.
- Electrical entrance is 4000 amps, 347/600 volt three phase. There is capacity available for more circuits.
- Exterior lighting is H.I.D. (High Intensity Discharge) with some NB Power poles.
- Interior lighting is fluorescent in fair condition.
- Heating system is electric baseboard as well as cabinet and duct heaters.
- There are four room ventilation units (HVAC) as well as 12 exhaust fans.
- Advanced Energy Management monitors the controls.
- The public address system is experiencing difficulties and could be considered for an upgrade.
- Air quality is fair, partially caused by minimal dust collection in the carpentry area.
- Washrooms are in fair condition and the showers are in fair condition in the locker rooms.
- Soccer field is shared with Nackawic Middle School.
- Windows are in fair condition in the additional space; some leak water and are drafty.
- Exterior doors are in poor condition -original.
- There is a cafeteria in good condition.
- Floors are tile, and terrazzo in the corridors and washrooms.
- Ceilings in the hallways are suspended; some classrooms have tiles.
- Painting is done according to a summer schedule.
- Interior doors are fire rated with appropriate panic hardware.
- Stairways are enclosed to meet fire separation requirements complete with fire rated doors, frames and hardware.
- Gymnasium floor is hardwood and was just replaced in Summer 2015. Square footage is 7280 square feet.
- There is no wheel chair access to the stage.
- There is proper access to the roof.
- Corridor walls are masonry.
- There is Whirltec lift with a capacity of 550 pounds.
- Parking is adequate that is paved and in good condition.
- Water supply is municipal.
- Roof does not leak. Roof repairs in 2005. Canopy roofs are in need of replacement.
- The school is 6,697 square meters.
- Land ownership around the school is both residential and school.
- There is room to expand and the neighborhood is appropriate to maintain a school facility for years to come.



Nackawic Senior High School

50 Landegger Drive, Nackawic, NB E6G 1E9

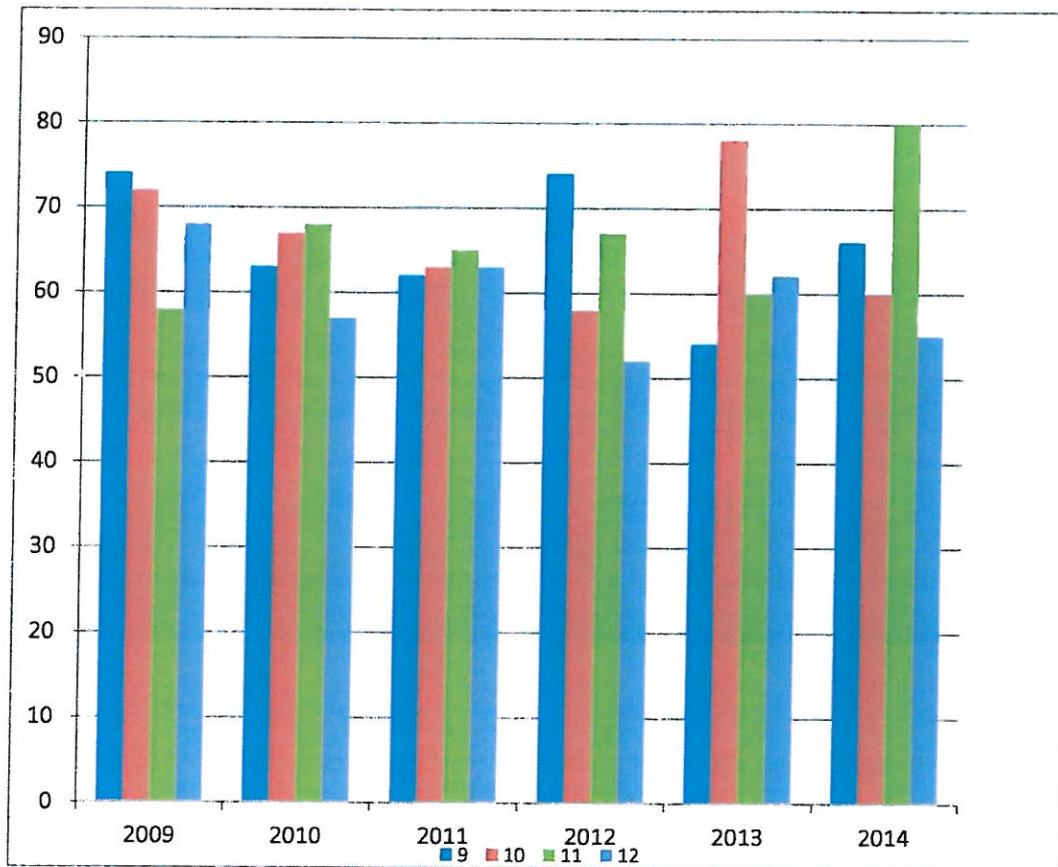
Phone: (506) 575-6010 Fax: (506) 575-6029

Grades: 9-12

Built: 1967

Enrollment 2009-2014

	2009	2010	2011	2012	2013	2014
9	74	63	62	74	54	66
10	72	67	63	58	78	60
11	58	68	65	67	60	80
12	68	57	63	52	62	55
Total	272	255	253	251	254	261





Nackawic Senior High School

50 Landegger Drive, Nackawic, NB E6G 1E9

Phone: (506) 575-6010 Fax: (506) 575-6029

Grades: 9-12

Built: 1967

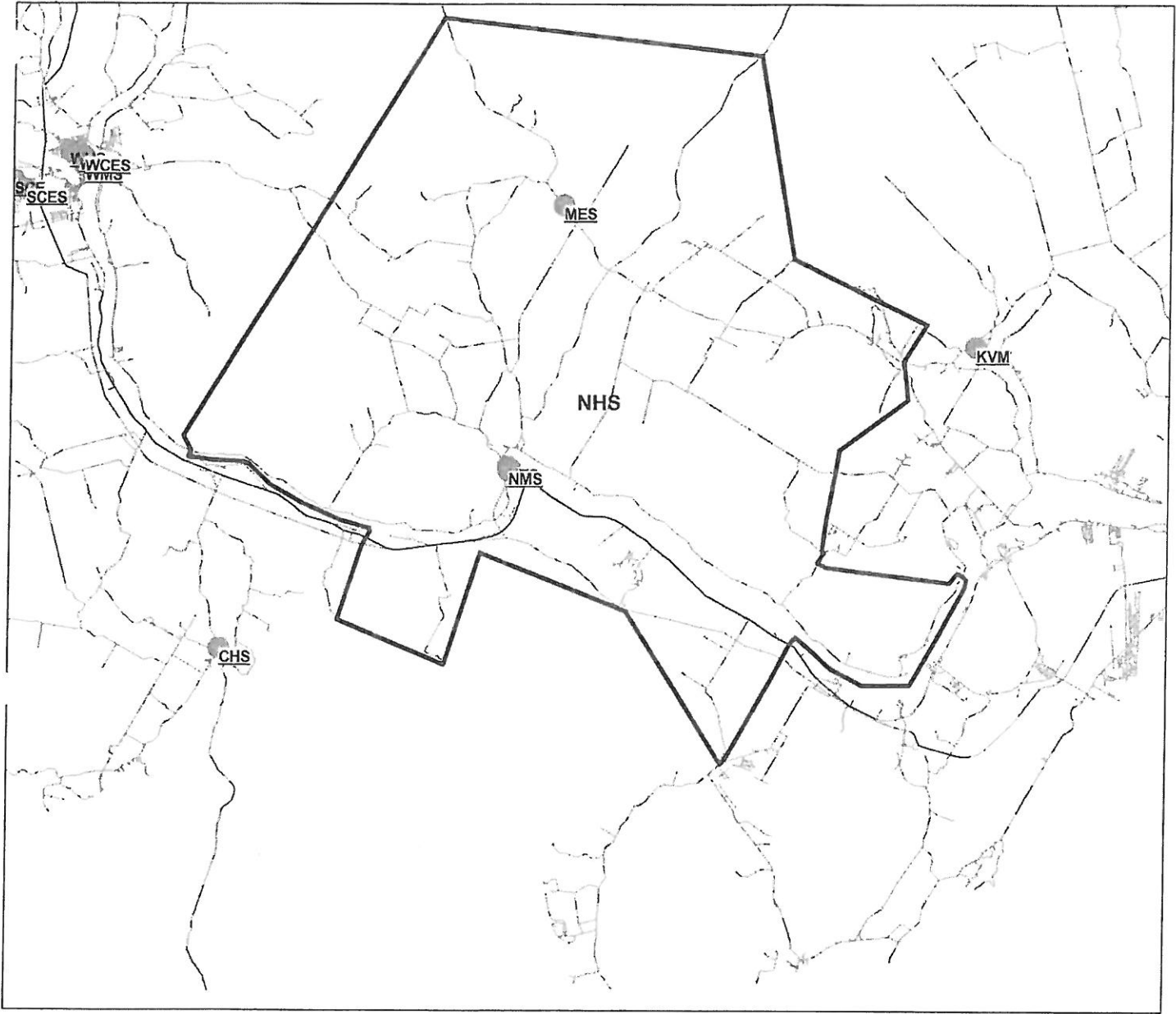
Feeder Schools

Students attend Nackawic Senior High School from grade 9-12 once they finish grade 8 at Nackawic Middle School. A portion of the Keswick Valley catchment area attend Nackawic High. As well as a group of students from River Valley Christian School.

Catchment Area Boundaries

North to the York County line; West to Route 2; East to the York County line; South to #1400 Route 104, #6260 old Route 2, #1604 Route 105, #1081 Scotch Lake Road, #729 Route 615 and #1017 Route 616.

School District 14
District Map





Nackawic Senior High School

50 Landegger Drive, Nackawic, NB E6G 1E9

Phone: (506) 575-6010 Fax: (506) 575-6029

Grades: 9-12

Built: 1967

Operational Costs

Electricity	\$	118,893.91
Water/Sewage	\$	13,308.82
Garbage Removal	\$	4,867.93
Snow Plowing	\$	9,375.00
Heating Fuel	\$	-
Natural Gas	\$	-
Cleaning Supplies/Services	\$	3,266.34
Minor Repairs/Renovations	\$	8,247.78
Total	\$	157,959.78

Operational Costs Per Square Meter	\$	23.59
Based on:	6697 Sq Meters	

Operational Costs Per Student	\$	605.21
Based on:	261 Enrollment	



Nackawic Senior High School

50 Landegger Drive, Nackawic, NB E6G 1E9

Phone: (506) 575-6010 Fax: (506) 575-6029

Grades: 9-12

Built: 1967

Major Capital and Capital Improvements Projects 2010-2015

School Year	Project	Capital Improvements	Major Capital
2009-2010	Electric Service Entrance	\$ 69,243	
2012-2013	Radon	\$ 66,319	
Total		\$ 135,562	\$ -

Capital Improvement Projects

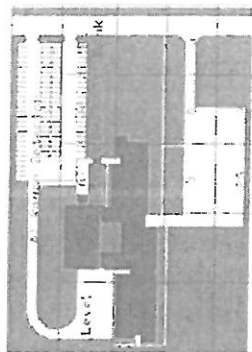
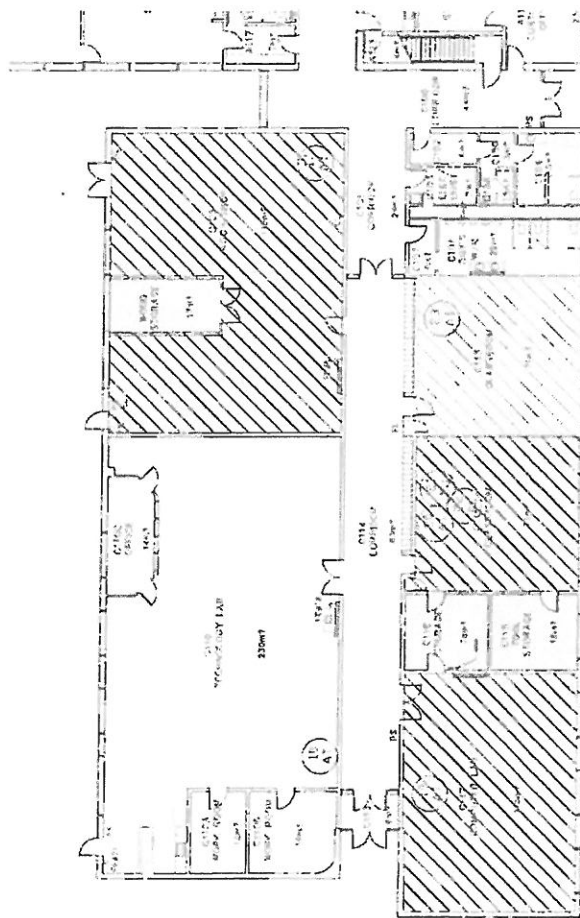
School: Nackawic Senior High School (ASD-W)				City/Village: Nackawic	Enrollment:	261	Total Area (sqM):	1967
District: ASD-W	School Number:	2801						
<u>Building Exterior and Site</u>								
Building Envelope	Exterior Doors	Description 14 exterior doors Automatic door openers, exterior and elevator Brick repointing Lawn repair Sports field Parking lot						
Building Envelope	Exterior Doors							
Building Envelope	Exterior Walls							
Site	Landscape							
Site	Playfield and Playground							
Site	Site Improvement							
Site								
<u>Mechanical and Electrical Systems</u>								
Heating and Ventilation	Ventilation System	Description Complete ventilation system. Note: Estimated costs updated Sept'13.						
School Total: \$2,038,000.00								

510.436

MECHANICAL / ELECTRICAL

LABORATORY

DATE / /

[illegible][illegible]

Department of Education
Ministère de l'Éducation

New Brunswick
Nouveau Brunswick

Nackawic High
30 Landegger Dr
Nackawic, NB
- School District 14 -

[illegible]



Nackawic High School