



Nackawic Elementary School

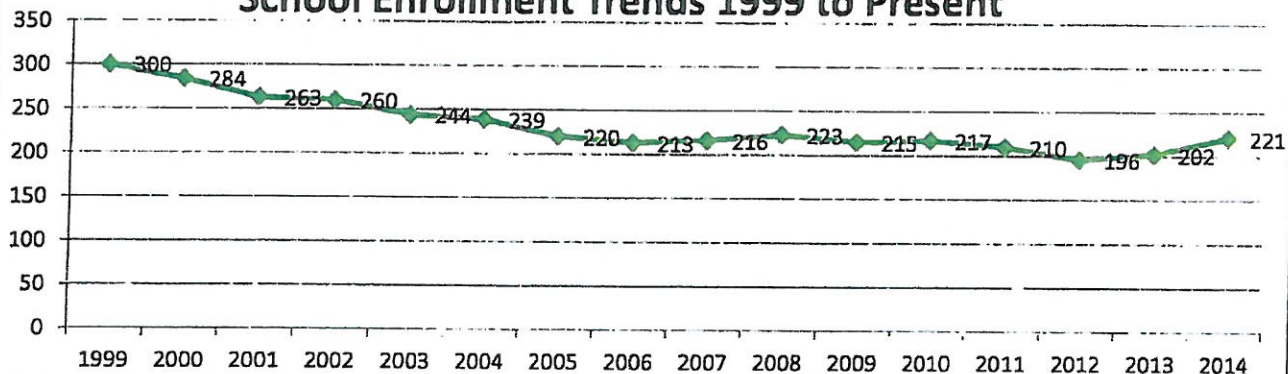
110 McNair Drive, Nackawic, NB E6G 1A8
Phone: (506) 575-6000 Fax: (506) 575-6001

Grades: K-5

Built: 1967

Functional Capacity Data based on 24 students per class	Student Enrollment	Number of Classrooms	Classrooms In Use	School Capacity	Capacity Rating
	221	13	11	312	70.8%

School Enrollment Trends 1999 to Present



Physical Description:

- Built in 1967 with addition in 1987.
- Electrical entrance is 800 amps, 347/600 volt three phase and in good condition. There is capacity available for more circuits.
- Exterior lighting – 3 poles with dusk to dawn lights, various lights on the building.
- Interior lighting is fluorescent in fair condition in original part; good in new wing.
- Heating system is electric baseboard as well as cabinet and duct heaters.
- There are 3 ventilation units (HVAC); upgrades in 2005.
- Advanced Energy Management monitors the controls.
- Air quality is good.
- Washrooms are in good condition.
- Playground consists of 2 areas; up to standard, has good apparatus.
- They have a soccer field.
- Windows are poor to fair.
- Exterior doors are in good condition; installed in 1987.
- There is a cafeteria in good condition.
- Floors are tile, vinyl, and ceramic at the entrance.
- Ceilings in the hallways are suspended; cedar in the classrooms.
- Painting is done according to a summer schedule.
- Interior doors are wood and fire rated.
- Stairways are enclosed to meet fire separation requirements complete with fire rated doors, frames and hardware.
- Gymnasium floor is made of wood in good condition. Square footage is 2760 square feet.
- There is no wheel chair access to the stage.
- There is proper access to the roof and there was a roof repair in 2005 and 2010.
- Corridor walls are masonry.
- There is a "Stairlift" lift with a capacity of 450 pounds.
- Parking is adequate that is paved and in poor condition.
- Water supply is municipal.
- The school is 3,394 square meters.
- Land ownership around the school is residential.
- There is room to expand and the neighborhood is appropriate to maintain a school facility for years to come.



Nackawic Elementary School

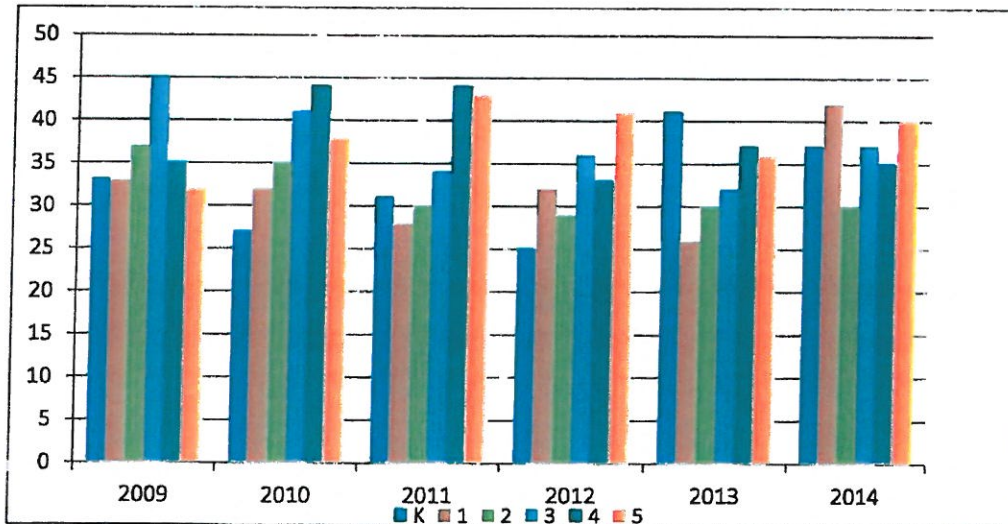
110 McNair Drive, Nackawic, NB E6G 1A8
Phone: (506) 575-6000 Fax: (506) 575-6001

Grades: K-5

Built: 1967

Enrollment 2009-2014

	2009	2010	2011	2012	2013	2014
K	33	27	31	25	41	37
1	33	32	28	32	26	42
2	37	35	30	29	30	30
3	45	41	34	36	32	37
4	35	44	44	33	37	35
5	32	38	43	41	36	40
Total	215	217	210	196	202	221





Nackawic Elementary School

110 McNair Drive, Nackawic, NB E6G 1A8
Phone: (506) 575-6000 Fax: (506) 575-6001

Grades: K-5

Built: 1967

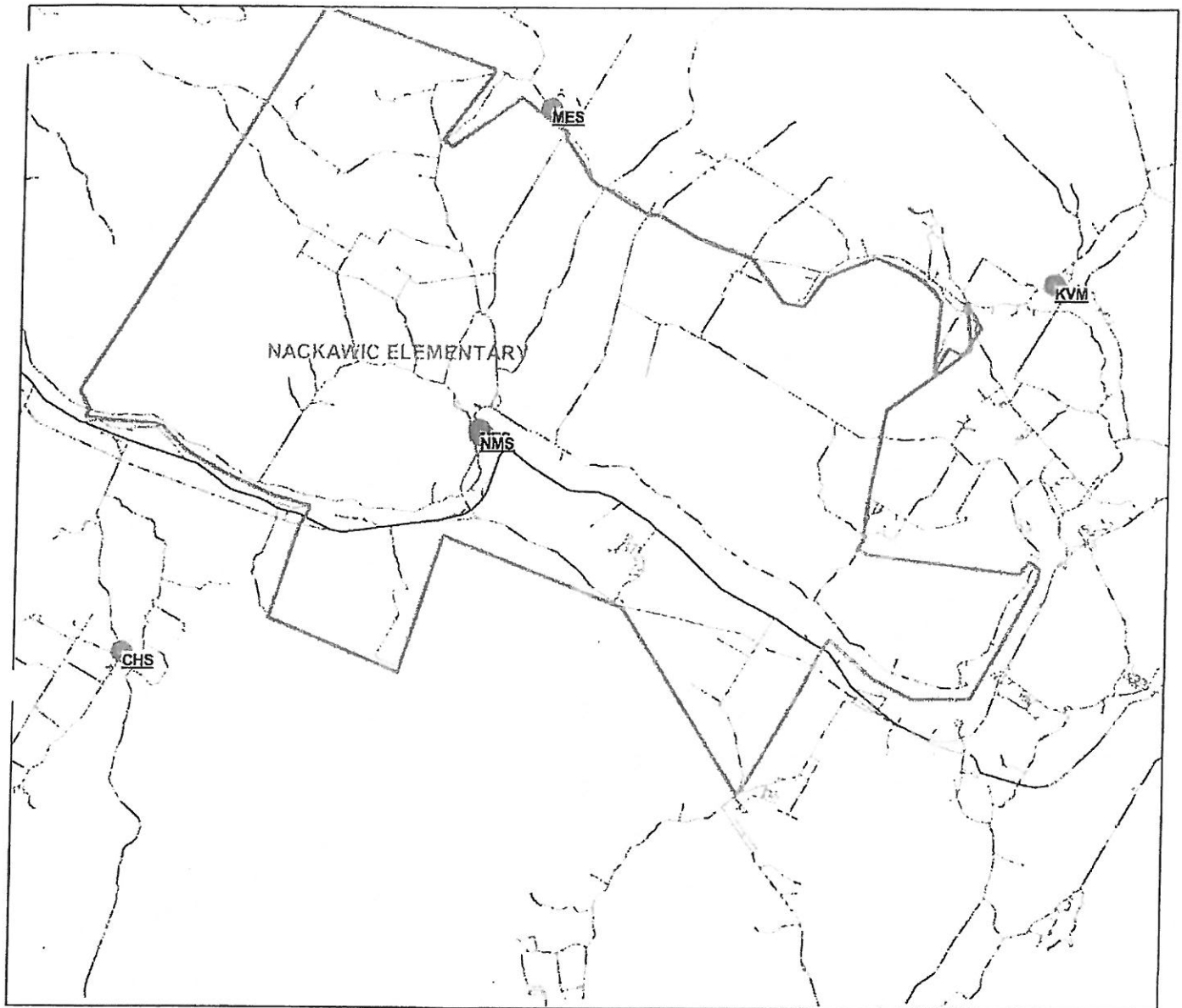
Feeder Schools

Students move onto Nackawic Middle School for grades 6-8.

Catchment Area Boundaries

North to the York County line; West to Route 2; East to #550 Route 585, #1465 Route 605 and to Route 104; South to #6260 old Route 2, #1604 Route 105, #1081 Scotch Lake Road, #729 route 615

School District 14 District Map





Nackawic Elementary School

110 McNair Drive, Nackawic, NB E6G 1A8
Phone: (506) 575-6000 Fax: (506) 575-6001

Grades: K-5

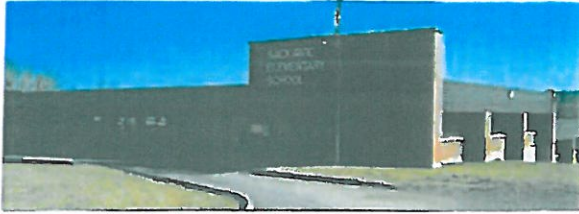
Built: 1967

Operational Costs

Electricity	\$	56,951.44
Water/Sewage	\$	12,576.42
Garbage Removal	\$	3,427.65
Snow Plowing	\$	8,020.85
Heating Fuel	\$	-
Natural Gas	\$	-
Cleaning Supplies/Services	\$	2,813.95
Minor Repairs/Renovations	\$	5,231.16
Total	\$	89,021.47

Operational Costs Per Square Meter	\$ 26.23
Based on: 3394 Sq Meters	

Operational Costs Per Student **\$ 402.81**
Based on: 221 Enrollment



Nackawic Elementary School

110 McNair Drive, Nackawic, NB E6G 1A8

Phone: (506) 575-6000 Fax: (506) 575-6001

Grades: K-5

Built: 1967

Major Capital and Capital Improvements Projects 2010-2015

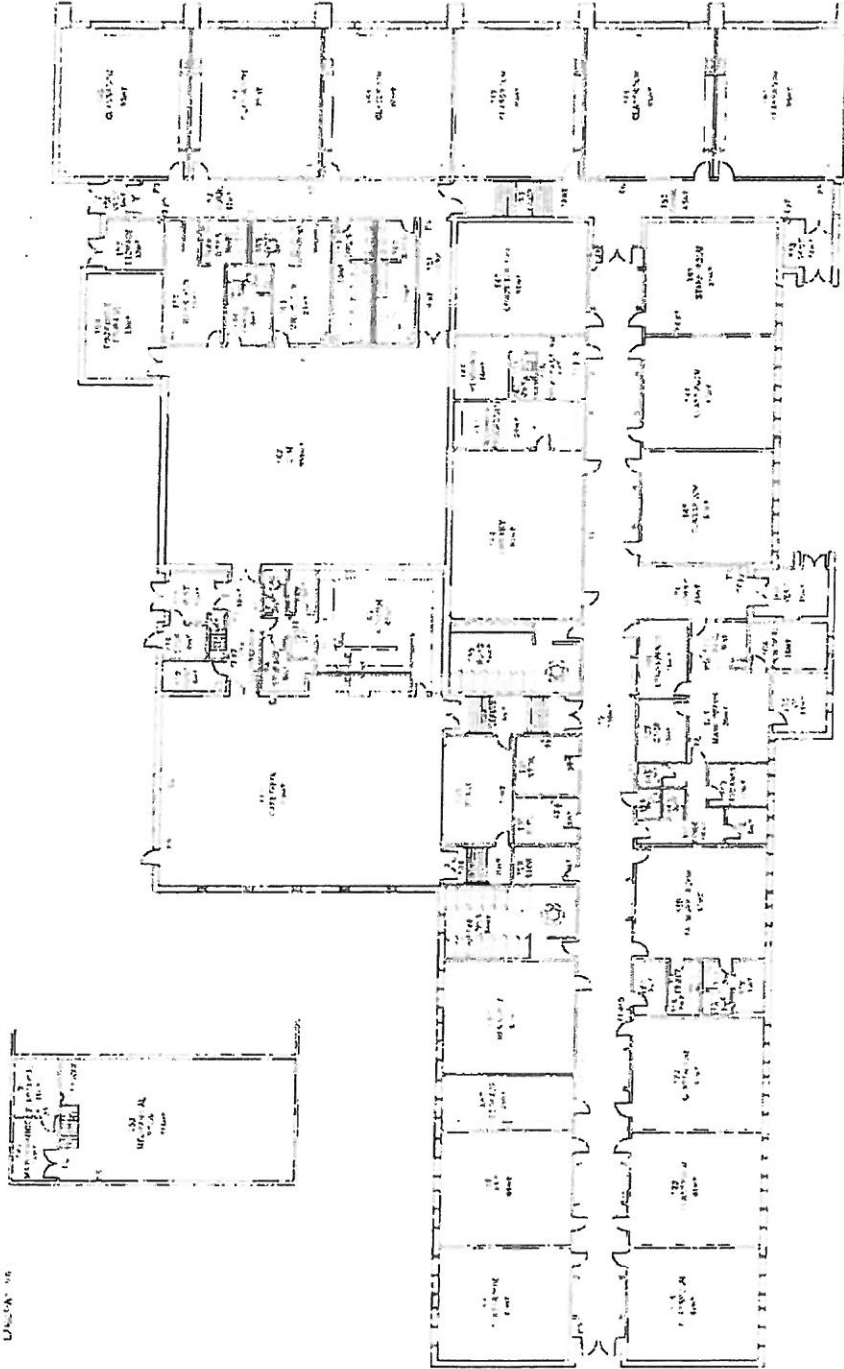
School Year	Project	Capital Improvements	Major Capital
2010-2011	Roof Replacement	\$ 221,969	
Total		\$ 221,969	\$ -

Capital Improvement Projects

School: Nackawic Elementary School (ASD-W)				Year Built	1967
District: ASD-W	School Number: 2802	City/Village: Nackawic	Enrollment: 221	Total Area (sqM):	3394
<u>Building Exterior and Site</u>					
Building Envelope	Exterior Doors	Description	Automatic door openers		
Building Envelope	Exterior Windows		Window replacement - Phase II		
Site	Site Improvement		Review and upgrade parent drop off zone around the rear of the school. (bus as well ?)		
<u>Building Interior and Additions</u>					
Interior Finishes	Floors	Description	Re-tile floors - 7 classrooms	→ to be prepared Complete	
<u>Mechanical and Electrical Systems</u>					
Electrical	Electrical Maintenance	Description	Electric transformer cleaning		
School Total:				\$295,000.00	\$280,000

New Brunswick
 Nouveau Brunswick

Nackawic Elementary School
110 McNair Drive
Nackawic, NB
- School District 14 -

[illegible][illegible]

Nackawic Elementary

