



Kingsclear Consolidated School

3188 Woodstock Road, Fredericton, NB E3C 1K9

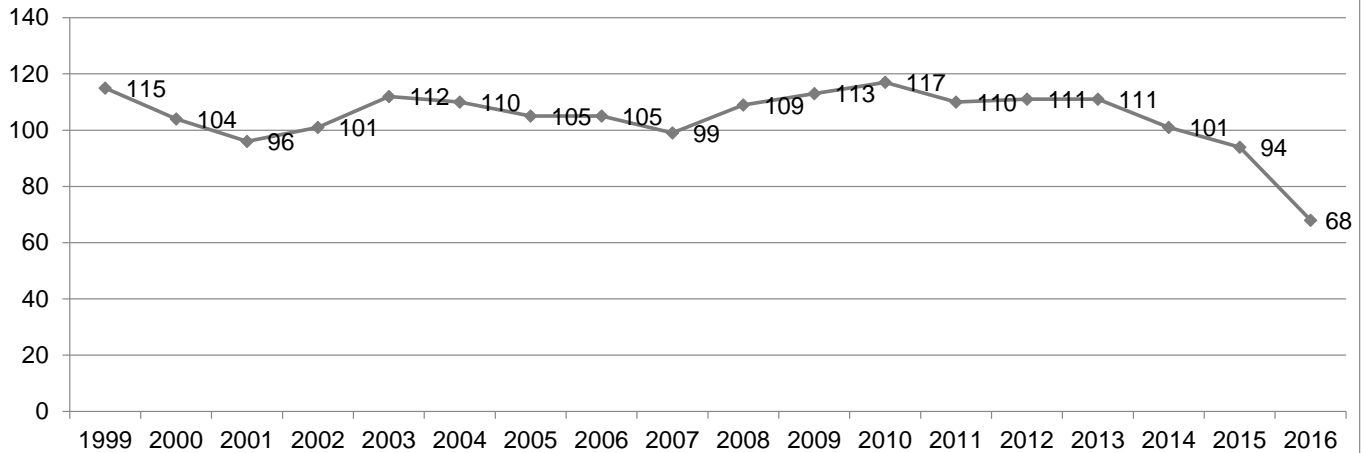
Phone: (506) 453-5414 Fax: (506) 457-7831

Grades: K-5

Built: 1950

Functional Capacity Data	Student Enrolment	Number of Classrooms	Classrooms In Use	School Capacity	Capacity Rating
based on 24 students per class	68	7	5	168	40.5%

School Enrolment Trends 1999 to Present



Physical Description:

- Kingsclear Consolidated School is a two-storey wooden framed structure built in 1950.
- Owned by the Province of New Brunswick.
- The school has no ventilation system, sprinkler or gymnasium.
- Parking is limited but adequate at the school during regular school day.
- Storage is a concern.
- Renovated the two top floor washrooms and the two bottom floor washrooms, September 2009.
- Replaced boiler and all associated controls, pumps and tanks, September 2009.
- Replaced roof # 1, September 2010.
- The school is 1,332 square meters.
- Land ownership around the school is commercial and residential.
- There is room to expand and the neighbourhood is appropriate to maintain a school facility.
- There are no environmental concerns.



Kingsclear Consolidated School

3188 Woodstock Road, Fredericton, NB E3C 1K9

Phone: (506) 453-5414 Fax: (506) 457-7831

Grades: K-5

Built: 1950

Operational Costs

Electricity	\$	4,797.77
Water/Sewage	\$	296.35
Garbage Removal	\$	540.84
Snow Plowing	\$	7,397.00
Heating Fuel	\$	9,616.84
Natural Gas	\$	-
Cleaning Supplies/Services	\$	3,651.58
Minor Repairs/Renovations	\$	3,314.58
Total	\$	29,614.96
Operational Costs Per Square Metre	\$	22.23
Based on:	1332 Sq Metres	
Operational Costs Per Student	\$	315.05
Based on:	94 Enrolment	



Kingsclear Consolidated School

3188 Woodstock Road, Fredericton, NB E3C 1K9

Phone: (506) 453-5414 Fax: (506) 457-7831

Grades: K-5

Built: 1950

Feeder Schools

Students move to George Street Middle School for Grades 6-8.

Catchment Area Boundaries

Area covering between the intersection of the Woodstock Road (Route 102) and Springhill Road (at the Bucket Club) to the Longs Creek Bridge, Mazerolle Settlement and all side streets to the Chapel Road, including Carriage Hill Drive, Valley View Estates, Mary Ellen Drive, Team Drive, Upper and Lower Kingsclear, Islandview and Sliverwood.



Kingsclear Consolidated School

3188 Woodstock Road, Fredericton, NB E3C 1K9

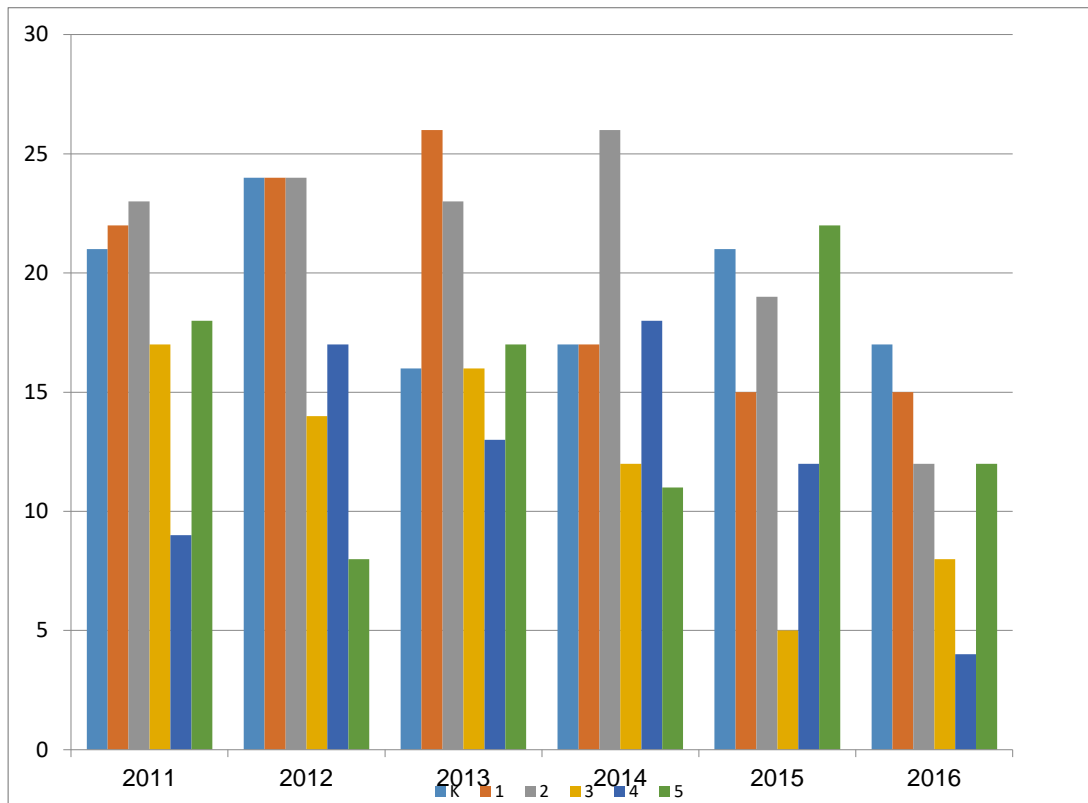
Phone: (506) 453-5414 Fax: (506) 457-7831

Grades: K-5

Built: 1950

Enrolment 2011-2016

	2011	2012	2013	2014	2015	2016
K	21	24	16	17	21	17
1	22	24	26	17	15	15
2	23	24	23	26	19	12
3	17	14	16	12	5	8
4	9	17	13	18	12	4
5	18	8	17	11	22	12
Total	110	111	111	101	94	68

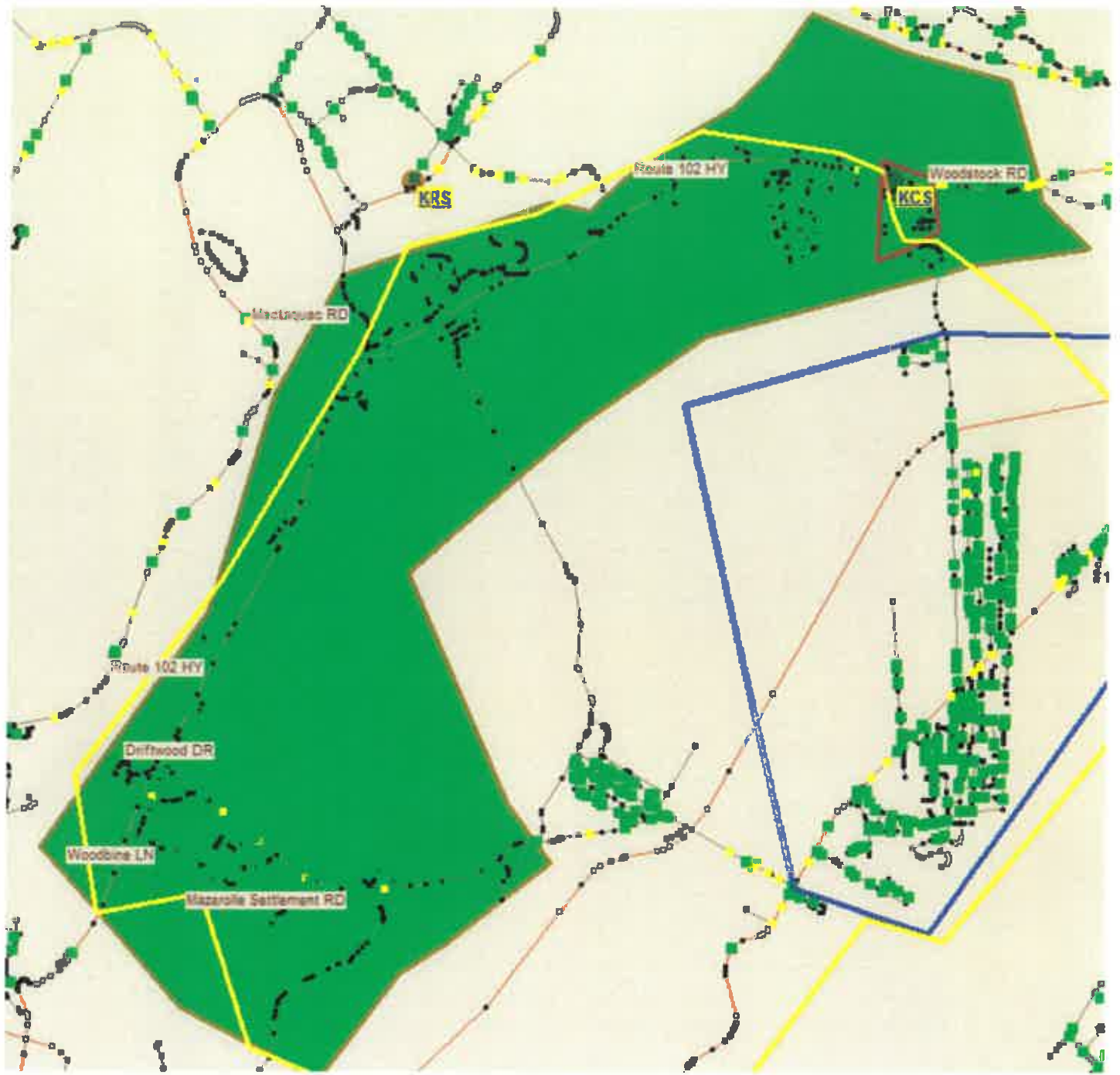


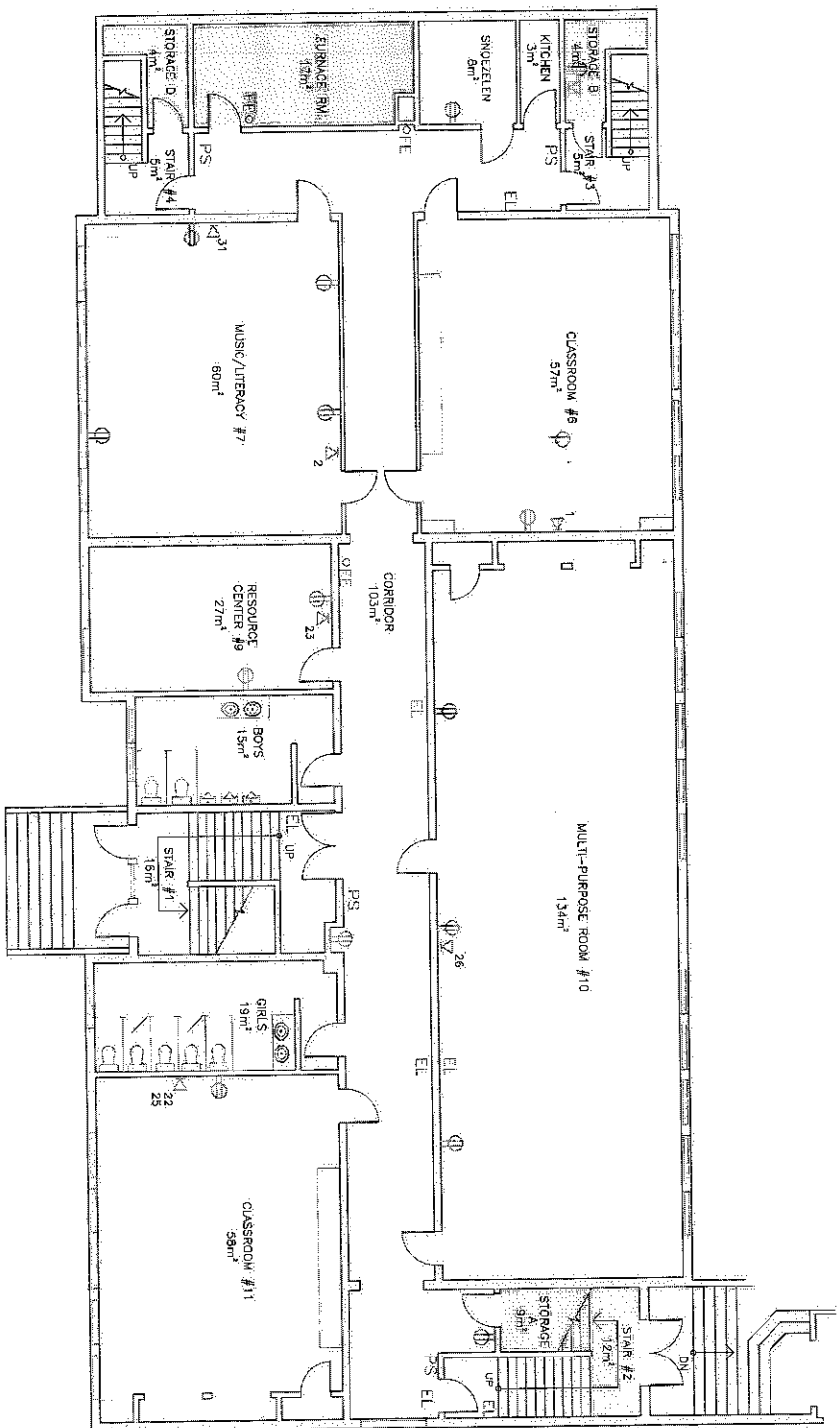


Kingsclear Consolidated School
 3188 Woodstock Road, Fredericton, NB E3C 1K9
 Phone: (506) 453-5414 Fax: (506) 457-7831
 Grades: K-5
Built: 1950

Major Capital and Capital Improvements Projects 2010-2015

School Year	Project	Capital Improvements	Major Capital
2009-2010	Heating System	\$ 65,570	
2009-2010	Washroom Upgrade	\$ 51,051	
2010-2011	Exteriors Finishings	\$ 16,257	
2010-2011	Roof Replacement	\$ 42,345	
Total		\$ 175,223	\$ -



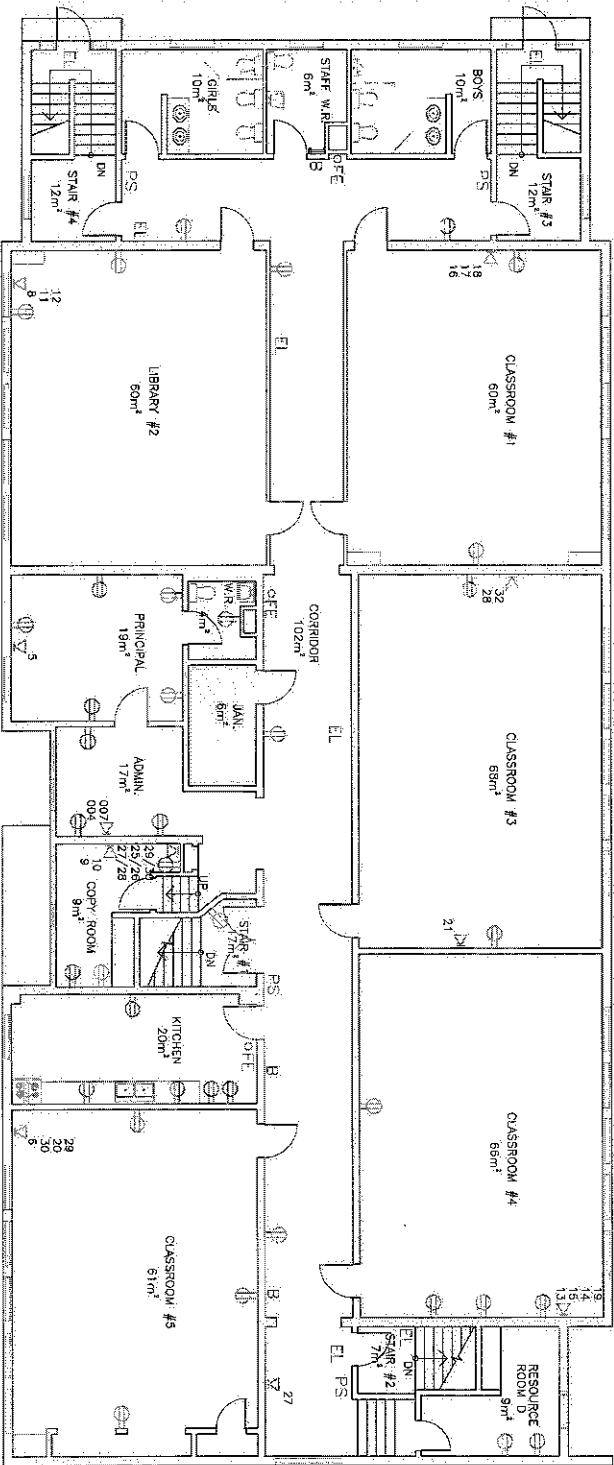


GROUND FLOOR PLAN
(SCALE: 5/32"=1'-0")

MECHANICAL / ELECTRICAL

NO. DU BISSON / DRAWING NO.		A1	
DESIGNER / DRAWN BY:		CASTREVS	
APPROVED BY / APPROVED BY:		XXXX	
<p>Department of Education Ministère de l'Éducation</p> <p>New Brunswick Nouveau Brunswick</p> <p>Kingsclear School 3188 Woodstock Road Fredericton, NB - School District 18 -</p>			
DATE	NO. DU BISSON / DRAWING NO.	DATE	NO. DU BISSON / DRAWING NO.
FEB 25/98	A1		
DESIGNER / DRAWN BY:	CASTREVS	DATE	FEB 25/98
APPROVED BY / APPROVED BY:	XXXX	NO. DU BISSON / DRAWING NO.	A1

NOTE



SECOND FLOOR PLAN
(SCALE: 3/32"=1'-0")

STORAGE
MECHANICAL / ELECTRICAL

NOTE

NO.	REVISIONS / REVIEWS	DATE	PAR / BY

Department of Education
Ministère de l'Éducation



Kingsclear School
3188 Woodstock Road
Fredericton, NB
School District 18 -

DATE: FEB 25/08

DESIGNER / SCALE: 3/32" = 1'-0"

DOSSIER D.A.G. / CAD. FILE: Kingsclear School.dwg

DESIGNER / DRAWN BY: C.SIENKES

APPROVED BY: A2